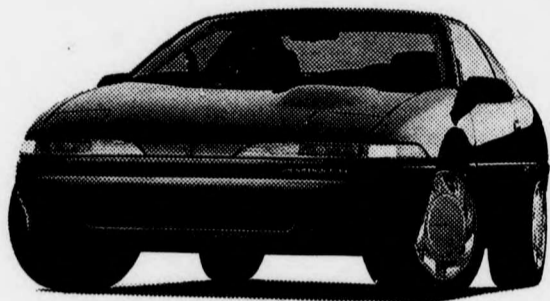


# 1991 GRADS

## Chrysler starts you on your way!

### \$750 Cash Rebate

in addition to any other incentives  
**PLUS NO PAYMENTS FOR 3 MONTHS**  
 on selected offers\*



**Plymouth Laser**  
 Sizzling looks and hot performance  
 From \$13,000\*\*\*



**Eagle Summit**  
 A sporty Japanese-built sedan  
 From \$10,657\*\*\*



**Jeep YJ**  
 The fun-to-drive convertible  
 From \$11,825\*\*\*



**Eagle Talon**  
 Driving excitement from an  
 award-winner  
 From \$15,100\*\*\*



**Plymouth Sundance/  
 Dodge Shadow**  
 Sporty good looks at an  
 affordable price  
 From \$8,995\*\*\*



**Plymouth Colt 200**  
 A high-spirited car with style  
 From \$9,195\*\*\*

You've worked hard for your education. And now Chrysler wants to start you on your way with incredible savings on your first new car or truck.

Whatever your taste, from the dynamic, affordable Colt to the adventurous Jeep YJ to the sleek Eagle Talon, you'll save an additional \$750 on any new 1991 Chrysler vehicle of your choice!

Make the best deal you can at any Dodge-Plymouth or Jeep/Eagle dealership, then present the certificate below for an additional savings of \$750!

And there's more good news. You can defer your payments for three months on Chrysler Credit approved financed purchases on 48-month terms on selected offers. You will pay the full amount, but Chrysler understands that

when you're first starting out this deferral option gives you a little extra time to start you on your way.†

It's that simple. And that affordable!

Visit your Dodge-Plymouth or Jeep/Eagle dealer today for a test-drive. Experience the Chrysler difference for yourself.

**Buy with confidence**

All of Chrysler Canada's cars and trucks are protected by warranty coverage that spells confidence. The Powertrain Warranty extends coverage up to 7 years or 115,000 kilometres for all domestic vehicles and up to 5 years or 100,000 kilometres for all import vehicles.\*\*

\*Vehicles may not be exactly as shown.  
 \*\*A deductible may apply. See Dealer for details.  
 \*\*\*Manufacturers suggested retail price base vehicle. Price excludes freight, licence, tax and insurance. Dealer order may be necessary. Dealer may sell for less. Offer available until December 31, 1991.



### Chrysler Graduate Program

**\$750 CASH REBATE**  
 on the 1991 Chrysler vehicle of your choice  
 in addition to any other incentives  
**PLUS NO PAYMENTS FOR 3 MONTHS**  
 on selected offers†

Please complete:

EXCALIBUR 2-91


Name: \_\_\_\_\_

Street: \_\_\_\_\_ City: \_\_\_\_\_

Province: \_\_\_\_\_ Postal Code: \_\_\_\_\_ Telephone: \_\_\_\_\_

Bring this certificate to the Dodge-Plymouth or Jeep/Eagle dealer of your choice to receive your cash rebate.

†If you finance at regular rates for 48 months, you may choose to defer your first monthly payment for 90 days. You will pay the amount financed and interest for the 48 month term over 45 months (45 equal monthly payments with a 3-month delay to first installment). Chrysler Credit Canada Ltd. approval required. Offer applies to retail purchases for personal use only. Other Chrysler special reduced finance rate programs cannot be combined with this deferral offer. Purchase and take delivery of any eligible vehicle no later than December 31, 1991 from a participating dealer. See dealer for details.

CHRYSLER   
 All you have to do is drive one.