

## QUITS POST AS HEAD OF KU KLUX

Imperial Wizard Pro Tem Will Turn Over the Order to Colonel Simmons on November 10.

Atlanta, Ga., Oct. 9.—Edward Young Clarke, Imperial Wizard pro tem. of the Knights Ku Klux Klan and virtual dictator of the order for several years, has just announced his withdrawal from all official connection with the Klan. From November 10 he will be merely a member. At that time Co. William J. Simmons will resume his post as active head of the organization.

In his resignation Mr. Clarke scored his enemies, declaring he had been the victim of cruel persecution. He denied he had made a great fortune out of the Klan, expressed his loyalty to the order, and gave private business affairs as his reason for quitting.

Mr. Clarke stated that his reasons for withdrawing from official connection with the order were substantially as follows:—

- 1.—As far back as a year ago, when the attack upon the Klan was at its height and when he was the principal target of the attack, he announced his intention to stay in his position until he had completed the organization of the Klan, and the machine is ready to be turned over to other hands.
- 2.—During the last week in November there will be held in Atlanta the first national convention of the order and at that time it will be necessary for the government of the order to be in definite hands without any pro-tem officers and he desires to relinquish his temporary authority to Colonel Simmons, the Imperial Wizard and founder of the order, who during a six months' period of rest and recuperation, has been completely restored to health.
- 3.—There are now pending in the courts several cases brought by his enemies which he could win, he says, by fighting them through to a personal indication, but in fighting them he would damage to some extent the machine which he devoted so much time and effort to building, and, therefore, he prefers to eliminate himself as a personal factor in any litigation against the Klan, so that Colonel Simmons may take it over as a complete machine, free from any internal disturbance.

## Everything About Cuticura Soap Suggests Efficiency

### WARNING!

Be sure you buy genuine Beaver Board. All well-known Beaver Board is made only by The Beaver Board Company, Limited, of Thorold, Ont. Identify it by the Beaver trademark on the back of each panel. We stress this point, because the success of genuine Beaver Board has been such that imitations have entered the field. Use genuine Beaver Board and you can rest assured of an economical, permanent, fully-satisfactory job.



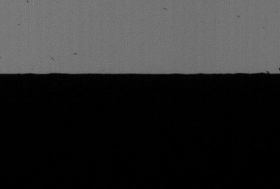
### Check Up Your Use for Beaver Board

**HOME USES:**  
Walls and ceilings throughout houses, bungalows, summer homes and cottages. Finishing the attic. Dining-room wainscots. Beamed ceilings. Lining sun porches and porches. Covering up old plaster. Remodeling large rooms into more, but smaller quarters. Putting extra rooms in waste space. Building-in bathrooms. Additions. Sheathing for small houses. Building workroom or laundry in basement. Cellar partitions.

We call your attention to this, especially, because there are a number of imitations of *Genuine Beaver Board* on the market. Some of these may look like *Beaver Board*, but none is made like *Beaver Board*. It is the only wall board made entirely of new spruce fibres, sized by the exclusive patented Sealrite process which preserves the surface and makes it perfect for painting.

Ask any good building material dealer or carpenter to tell you the cost of *Genuine Beaver Board* for your needs. This will be without charge or obligation.

Write for Samples and Booklet.  
**THE BEAVER COMPANY, LIMITED**  
Administration Offices: Thorold, Ont., Buffalo, N.Y., London, Eng.  
Eastern Sales Office: Thorold, Ont.  
Western Sales Office: Winnipeg, Manitoba.  
Distributors and Dealers Everywhere.



## Corns Go Blue-jay to your druggist

The simplest way to end a corn is Blue-jay. A touch stops the pain instantly. Then the corn loosens and comes out. Made in a colorless clear liquid (one drop does the work) and in extra thin plaster. The action is the same.

## Pain Stops Instantly

as a scar to help identification. The arms and legs, as in the case of the head, had been crudely lashed off. The torso was wrapped in blue oilcloth and was tied with fishing line. The cloth, considerably worn and spotted with blood, was of cheap material. It is doubtful whether at this time the cloth will furnish a clue to the identity of the victim.

## WOMEN FIND TORSO OF MAN IN PARK

Mutilated Body was Near Where Boys Found Head on Sunday.

New York, October 9.—The Bronx Park murder mystery, beginning with the discovery last Sunday of the head of a man wrapped in a newspaper, developed into a still a still more gruesome puzzle when the torso, wrapped in oilcloth, was found by two women who were hunting for mushrooms.

The torso, from which the heart, right lung and other parts had been crudely cut, perhaps with a butcher knife or other dull weapon, was jammed between two rocks.

The spot is about 500 feet from the entrance, and not more than 100 feet from the spot where the two boys on Sunday found the head, wrapped in an Italian newspaper.

The torso was placed in the park, the police are certain, some time last night or this morning. Monday and Tuesday more than 100 park attendants and police searched the grounds. They are sure that the torso was not there Tuesday afternoon.

Edward Cashman, foreman of the park, called the police and the torso was taken to the Forensic morgue. Police medical examiners reported that there was not a mark on the torso such



## Make your attic into warm and cosy winter rooms

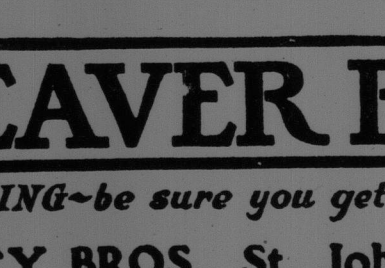
IT'S a quick, easy job to line your attic and partition it into attractive rooms with *GENUINE Beaver Board*. And it doesn't cost much, either. The big, wide panels can be nailed directly to joists or studding; the finishing strips added; paint, if you like—and everything is finished!

All over the house, you'll find that *Genuine Beaver Board* makes warmer, more attractive rooms at surprisingly low cost. And you can feel satisfied that your *Beaver Boarding* will last as long as your house, if you use *Genuine Beaver Board*.

We call your attention to this, especially, because there are a number of imitations of *Genuine Beaver Board* on the market. Some of these may look like *Beaver Board*, but none is made like *Beaver Board*. It is the only wall board made entirely of new spruce fibres, sized by the exclusive patented Sealrite process which preserves the surface and makes it perfect for painting.

Ask any good building material dealer or carpenter to tell you the cost of *Genuine Beaver Board* for your needs. This will be without charge or obligation.

Write for Samples and Booklet.  
**THE BEAVER COMPANY, LIMITED**  
Administration Offices: Thorold, Ont., Buffalo, N.Y., London, Eng.  
Eastern Sales Office: Thorold, Ont.  
Western Sales Office: Winnipeg, Manitoba.  
Distributors and Dealers Everywhere.



**BEAVER BOARD**  
WARNING—be sure you get genuine Beaver Board  
HALEY BROS., St. John, N. B.

## Corns Go Blue-jay to your druggist

The simplest way to end a corn is Blue-jay. A touch stops the pain instantly. Then the corn loosens and comes out. Made in a colorless clear liquid (one drop does the work) and in extra thin plaster. The action is the same.

## Pain Stops Instantly

as a scar to help identification. The arms and legs, as in the case of the head, had been crudely lashed off. The torso was wrapped in blue oilcloth and was tied with fishing line. The cloth, considerably worn and spotted with blood, was of cheap material. It is doubtful whether at this time the cloth will furnish a clue to the identity of the victim.

## WOMEN FIND TORSO OF MAN IN PARK

Mutilated Body was Near Where Boys Found Head on Sunday.

New York, October 9.—The Bronx Park murder mystery, beginning with the discovery last Sunday of the head of a man wrapped in a newspaper, developed into a still a still more gruesome puzzle when the torso, wrapped in oilcloth, was found by two women who were hunting for mushrooms.

The torso, from which the heart, right lung and other parts had been crudely cut, perhaps with a butcher knife or other dull weapon, was jammed between two rocks.

The spot is about 500 feet from the entrance, and not more than 100 feet from the spot where the two boys on Sunday found the head, wrapped in an Italian newspaper.

The torso was placed in the park, the police are certain, some time last night or this morning. Monday and Tuesday more than 100 park attendants and police searched the grounds. They are sure that the torso was not there Tuesday afternoon.

Edward Cashman, foreman of the park, called the police and the torso was taken to the Forensic morgue. Police medical examiners reported that there was not a mark on the torso such



## Make your attic into warm and cosy winter rooms

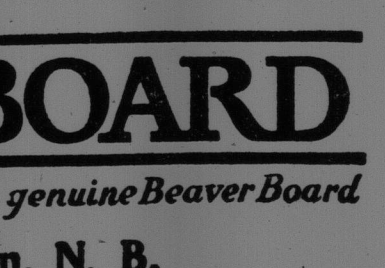
IT'S a quick, easy job to line your attic and partition it into attractive rooms with *GENUINE Beaver Board*. And it doesn't cost much, either. The big, wide panels can be nailed directly to joists or studding; the finishing strips added; paint, if you like—and everything is finished!

All over the house, you'll find that *Genuine Beaver Board* makes warmer, more attractive rooms at surprisingly low cost. And you can feel satisfied that your *Beaver Boarding* will last as long as your house, if you use *Genuine Beaver Board*.

We call your attention to this, especially, because there are a number of imitations of *Genuine Beaver Board* on the market. Some of these may look like *Beaver Board*, but none is made like *Beaver Board*. It is the only wall board made entirely of new spruce fibres, sized by the exclusive patented Sealrite process which preserves the surface and makes it perfect for painting.

Ask any good building material dealer or carpenter to tell you the cost of *Genuine Beaver Board* for your needs. This will be without charge or obligation.

Write for Samples and Booklet.  
**THE BEAVER COMPANY, LIMITED**  
Administration Offices: Thorold, Ont., Buffalo, N.Y., London, Eng.  
Eastern Sales Office: Thorold, Ont.  
Western Sales Office: Winnipeg, Manitoba.  
Distributors and Dealers Everywhere.



**BEAVER BOARD**  
WARNING—be sure you get genuine Beaver Board  
HALEY BROS., St. John, N. B.

## SLOW MOVING AIR CAUSING DROUGHT

Moisture-Bearing Winds Cannot Get Through to Thirsty Areas All Over Country—Usual Storms are Lacking.

Washington, Oct. 9.—(Associated Press).—The weather elements are not acting right. That is the only explanation the Weather Bureau can make for the protracted drought which grips a great part of the country. Meteorologically speaking the winds and the barometric pressures are acting contrary to nature. The air is sluggish and there is little movement in high or low strata, consequently the moisture-bearing air cannot journey over the country.

With the exception of California and the Northern Pacific Coast, Florida and the East Gulf Coast, there have been few areas where any rain to speak of has fallen for four or five weeks. There is a "low" extending from Washington, D. C., to south of Knoxville, Tenn., which is hardly moving and which forms a barrier to moisture-bearing winds, when that moves away, the Weather Bureau says there will be some chance of a change for the better.

One reason given for the dry and hot spell is that during September, the month of storms on the Great Lakes, only one storm was reported. This centre of disturbances usually radiates, which result in rain and cool breezes for the eastern states.

Storms have been generally lacking, and from the West Indies, the cradle of autumnal hurricanes, only the twister has come this season, and that went far from the Atlantic Coast. Until changes appear in the Pacific, off the northwestern coast, little relief can be expected for the northern and western states, and until storm clouds appear in the Gulf of Mexico, the central and eastern states can expect a continuation of the dry spell, the forecasters report.

## Damage to Crops Is Slight.

Although the present drought is making somewhat of a record for its severity covered and length of time, agriculturists and meteorologists declare it has been marked by an exceedingly small amount of crop damage. The preceding warm weeks rapidly matured corn and other crops, cotton and truck stuff, and the harvest generally is practically over. Some little damage may result to late corn, it was said by agriculture department officials, but this probably will not be extensive. The main trouble, from the farmers' point of view, is that sowing of winter wheat is being retarded by inability to get the ground in condition.

Cotton in Texas and Oklahoma was slightly damaged several weeks ago in the early stages of the dry spell. Truckers in the south have been saved from loss by recent showers from the Gulf of Mexico, but most late truck crops in northern sections have reached the stage where dry weather does little damage.

While farmers have not bothered greatly over crop damage, great loss has been done by forest fires in some sections and grave fears have been expressed in this country and Canada for inhabitants of forested areas.

Because of the drought of fires Governor Baxter of Maine has ordered the hunting season closed and persons are prohibited from carrying firearms into the woods. At Penobscot Bay tests of a new destroyer of the United States navy were abandoned because smoke from the fires obscured the course. Streams and Wells Are Dried Up.

The drying of streams and reservoirs in many sections of the country has been reported. Wells have failed and farmers and small town residents are forced to haul water long distances. At Pittsburgh, where the drought is in its twenty-fourth day, only emergency supplies of water are reported to remain in western sections of the State. River traffic is reported paralyzed.

At Cumberland, Md., it is reported that wells have gone dry, which have not been known to cease running for sixty years. The Potomac River, which supplies Washington's water, is very low.

Weather Bureau officials can see no relief from the drought or the continuing high temperature in any section of the country, except where local showers are reported. From nine cities throughout the middle west have come reports of temperatures higher than any ever before recorded for this time of the year. For at least twenty-four hours, which is about the limit of time the forecasters will prognosticate, fair and generally warmer weather is predicted. The temperature has risen in the lower lake region and the North Atlantic states, and has remained unusually warm from the plain states eastward.

It will soon grow cooler in the northern Rocky Mountain region and the northern plateau region, due to widespread showers there, and indications are for cooler temperatures in the North Atlantic states.

(Special to The New York Times.) Washington, Oct. 5.—Twenty-three successive days have passed without a trace of rain in the District of Columbia and the present dry period has broken all records. There has been no rain in Washington since 4:30 o'clock the morning of Sept. 12, according to official reports, and fair weather with no change in sight is forecast locally by the bureau.

The greatest previous drought in the district, according to records, was from Sept. 14 to Oct. 6, 1910, but in that period slight traces of rain were registered on the instruments at the Weather Bureau. In contrast to that the present dry period has been "bone dry."

## DENMARK NOT INCLINED TO TARIFF PROTECTION

Copenhagen, Sept. 15.—(A. P. by Mail).—The Danish government has announced through one of its ministers that it has no intention of departing from the national policy of free trade. Consequently it is expected to oppose some pending tariff bills. A tariff, the government feels, would retard an early fall in the price of foodstuffs.

The government is seeking support for a bill under which no importer would be allowed to bring products into Denmark from any other country without at the same time placing orders for an equal quantity of goods with Danish manufacturers.

## PLAN LIGHTHOUSES FOR AIRPLANES

Designers Employ a Huge Searchlight—Intended as Guiding Points in Night Flights.

New York, Oct. 9.—Demonstrations with an apparatus consisting of a large size searchlight and a huge inclined mirror, which have just been completed by the searchlight engineers of the General Electric Company at Schenectady, N. Y., are believed to be the forerunners of land lighthouses for the use of airplanes at night.

The equipment used in the tests comprised a 36-inch high intensity searchlight, having a capacity of 825,000,000 beam candle power and a mirror, which was used to reflect the powerful beam. The searchlight was included in a housing structure and remained stationary. The beam played through a window in the house upon the mirror and was reflected straight up into the sky to a great height.

The proposal is to identify the town or station by rotating the light in a certain manner. Thus a string of these land lighthouses could be set up, twenty-five miles apart, between two points, like New York and Washington, and to the airplane pilot familiar with the signals they would constitute a perfect guiding path through the night, as well as identify desired landing places. By including the searchlight, this delicate apparatus would be protected at all times from the weather.

In the General Electric tests the light beam was observed at points from six to seven miles distant. Land lighthouses, if established, would be only about half as far apart, however.

The searchlight, this delicate apparatus would be protected at all times from the weather.

In the General Electric tests the light beam was observed at points from six to seven miles distant. Land lighthouses, if established, would be only about half as far apart, however.

The searchlight, this delicate apparatus would be protected at all times from the weather.

In the General Electric tests the light beam was observed at points from six to seven miles distant. Land lighthouses, if established, would be only about half as far apart, however.

The searchlight, this delicate apparatus would be protected at all times from the weather.

In the General Electric tests the light beam was observed at points from six to seven miles distant. Land lighthouses, if established, would be only about half as far apart, however.

The searchlight, this delicate apparatus would be protected at all times from the weather.

In the General Electric tests the light beam was observed at points from six to seven miles distant. Land lighthouses, if established, would be only about half as far apart, however.

The searchlight, this delicate apparatus would be protected at all times from the weather.

In the General Electric tests the light beam was observed at points from six to seven miles distant. Land lighthouses, if established, would be only about half as far apart, however.

The searchlight, this delicate apparatus would be protected at all times from the weather.

In the General Electric tests the light beam was observed at points from six to seven miles distant. Land lighthouses, if established, would be only about half as far apart, however.

The searchlight, this delicate apparatus would be protected at all times from the weather.

In the General Electric tests the light beam was observed at points from six to seven miles distant. Land lighthouses, if established, would be only about half as far apart, however.

The searchlight, this delicate apparatus would be protected at all times from the weather.

In the General Electric tests the light beam was observed at points from six to seven miles distant. Land lighthouses, if established, would be only about half as far apart, however.

The searchlight, this delicate apparatus would be protected at all times from the weather.

In the General Electric tests the light beam was observed at points from six to seven miles distant. Land lighthouses, if established, would be only about half as far apart, however.

The searchlight, this delicate apparatus would be protected at all times from the weather.

In the General Electric tests the light beam was observed at points from six to seven miles distant. Land lighthouses, if established, would be only about half as far apart, however.

The searchlight, this delicate apparatus would be protected at all times from the weather.

In the General Electric tests the light beam was observed at points from six to seven miles distant. Land lighthouses, if established, would be only about half as far apart, however.

The searchlight, this delicate apparatus would be protected at all times from the weather.

In the General Electric tests the light beam was observed at points from six to seven miles distant. Land lighthouses, if established, would be only about half as far apart, however.

The searchlight, this delicate apparatus would be protected at all times from the weather.

In the General Electric tests the light beam was observed at points from six to seven miles distant. Land lighthouses, if established, would be only about half as far apart, however.

The searchlight, this delicate apparatus would be protected at all times from the weather.

In the General Electric tests the light beam was observed at points from six to seven miles distant. Land lighthouses, if established, would be only about half as far apart, however.

The searchlight, this delicate apparatus would be protected at all times from the weather.

In the General Electric tests the light beam was observed at points from six to seven miles distant. Land lighthouses, if established, would be only about half as far apart, however.

The searchlight, this delicate apparatus would be protected at all times from the weather.

In the General Electric tests the light beam was observed at points from six to seven miles distant. Land lighthouses, if established, would be only about half as far apart, however.

The searchlight, this delicate apparatus would be protected at all times from the weather.

In the General Electric tests the light beam was observed at points from six to seven miles distant. Land lighthouses, if established, would be only about half as far apart, however.

The searchlight, this delicate apparatus would be protected at all times from the weather.

In the General Electric tests the light beam was observed at points from six to seven miles distant. Land lighthouses, if established, would be only about half as far apart, however.

The searchlight, this delicate apparatus would be protected at all times from the weather.

In the General Electric tests the light beam was observed at points from six to seven miles distant. Land lighthouses, if established, would be only about half as far apart, however.

The searchlight, this delicate apparatus would be protected at all times from the weather.

In the General Electric tests the light beam was observed at points from six to seven miles distant. Land lighthouses, if established, would be only about half as far apart, however.

The Biscuit with a flavor

# McCORMICK'S BISCUITS

JERSEY CREAM SODA

Take a package home

## CARLETON CORNET BAND FAIR CLOSED

The Carleton Cornet Band fair closed on Saturday evening, at the Curling rink on the west side after a successful two weeks operation. The largest attendance of the fair was present on Saturday night when the three main door prizes were drawn. The first big prize, \$25, was won by ticket 1,217, held by Harvey Willis second prize, \$15, was won by ticket 2,599; and third prize, \$10, was won by ticket 3,153. The holders of the latter two tickets had not claimed their prizes up to last night. The shot gun, on which tickets were sold during the fair, was won by C. Bettinson. A guessing contest, on the length of a piece of rope in a bottle, was won by Gordon Perry with a guess of 250 inches, while the correct amount was 248 1/2 inches; the prize was a head mixer. The guessing contest on the number of beans in a bottle was won by Miss V. McLeod with a guess of 63, while 67 was the correct number. The guessing contest on the

weight of a keg was won by Miss L. Lord with a guess of 5 lbs. 10 ozs., which was just one ounce heavier than the correct weight. On Saturday night the ring toss was won by Mr. Wilson; the bean toss by Mrs. Geary; the air gun by A. Duffy; devil-among-the-tailors, by T. Nichols; excelsior, O. Duffy and J. C. Maxwell; bag-a-telle, W. Lyden.

The C. P. R. steamer Empress, of the St. John-Digby service, which went aground at Black Point and which has been undergoing repairs in Market slip, is expected to get away for Halifax late tonight. The men of the St. John Dry Dock & Shipbuilding Company expect to finish temporary repairs during the two low tides today.

# THOROBREAD FLOUR

Becomes a Habit

Milled by Hunt Bros Limited London, Canada

Thorobread Flour BLOOMS in Ovens.

# THIS IS HOSIERY WEEK

## AT OAK HALL

The most stupendous showing of Hosiery for men, women and children we've ever attempted. We planned for this months ago and stocked up plentifully with the best Hosiery procurable and several lines at big price reductions.

Our windows generously display Hosiery.  
Our store decorations generously display Hosiery.  
Our fixtures are generously stocked with Hosiery.  
Our salespeople are mightily enthused with the offerings.

The Stage is Set—We're Ready for You.

### Men's Hosiery

50c.—All-Wool Black Cashmere, English make, an extra special value for this week.  
59c.—Another super-value for this week, all-wool Heavy Black Worsted Socks.  
75c.—Jaeger Heather All-Wool Worsted Socks. Heavy All-Wool Cashmeres in brown, or black. British made.  
85c.—The greatest value of the week, fine Heather Ribbed Cashmere Socks.  
98c.—All-Wool Heavy Black Worsted Socks, priced specially for HOSIERY week.  
\$1.00.—All-Wool Heather Cashmeres, fine ribbed or plain. Silk or Cashmere Socks. Clocks Cashmeres in tan, blue, slate, clocks of a contrasting shade.  
\$1.25.—Wolsey All-Wool Black Worsted Socks.  
And Many Other Lines, Too!  
Street Floor.

### Hosiery for Boys

Bunny Hose—All-wool, tan, cordovan, white, black. Sizes, 4 1/2 to 8 1/2. Prices, 45c. to 85c.  
English Cashmere—All-wool, 2x1 rib, black. Sizes, 8 1/2 to 10. \$1.25  
Diamond Knee—Heavy ribbed cashmere. Sizes, 7 to 11. \$1.35 to \$1.75  
English Worsted—All wool. Sizes, 7 to 10. 55c. to \$75c.  
Golf Hose—Heather worsteds, fancy tops. Sizes, 8 to 10. \$1.00 to \$1.15  
Jaeger Hose—Fine ribbed black cashmere. \$1.25  
Many Other Lines Not Mentioned.  
Boys' Shop—4th Floor.

### Hosiery for Women

\$1.19—Ribbed Wool Hosiery in brown, navy, putty.  
\$1.65—All-Wool Ribbed Hosiery in brown, tan, navy.  
\$1.75 All-Wool Wide Ribbed Hosiery in grey heather mixtures. Silk mixture Hosiery in camel, brown, grey.  
\$1.85—Venus Silk Hosiery in all wanted shades.  
\$2.00 Silk and Wool Elastic Top Venus Hosiery in brown.  
\$2.25 Silk and Wool Hosiery in light mixtures.  
\$2.50—Pyramid Heel Pure Thread Silk Hosiery.  
\$3.00—Heavy Quality Pure Thread Full Fashioned Hosiery.  
\$3.50 to \$4.50—Glove Silk Hosiery.  
\$4.25—Extra Heavy Pure Thread Silk Hosiery in black or white.  
Women's Shop—3rd Floor.

### Hosiery Offerings From the Bargain Basement

21c.—Black Cotton Hosiery, ribbed tops.  
39c.—Fine Cotton Full Fashioned Hosiery, black, cordovan, white.  
55c.—Heather Cashmere, in browns and Lovats.  
59c.—Fibre Silk in black (seconds).  
69c.—Lisle, full fashioned, in black.  
79c.—Fibre silk, Burson knit, black, cordovan.  
\$1.25—Pure Silk, substandards.  
Hosiery for Children, Too!

# OAK HALL

Scovil Bros., Limited  
King Street