

# FRICITION PULLEY BOARD

The BEST Article Used for the Purpose.

MANUFACTURED BY **WM. B. GIFFORD - Montcal, Que.**

The Leading European Lumber Paper

**The  
Timber  
Trades  
Journal**

Published Weekly by **WILLIAM RIDER & SON Ltd.**,  
14 Bartholomew Close, LONDON, E. C.

— SUBSCRIPTION: \$5.00 PER ANNUM, POST FREE —

The "TIMBER TRADES JOURNAL" circulates in all European countries, the British Colonies, United States, &c., and is a very reliable medium of publicity for all buyers and sellers of hardwoods.

Sample Copies may be seen at the Office of THE CANADA LUMBERMAN

FRANK DENTON, Q.C. HERBERT L. DUNN.  
W. MULOCK BOULTBEE.  
**DENTON, DUNN & BOULTBEE**  
Barristers, Solicitors, Notaries, etc.  
"Temple Building,"  
Bay and Richmond Sts. TORONTO.

ESTABLISHED 1849.  
CHARLES F. CLARK, JARED CHITTENDEN,  
President. Treasurer.  
**BRADSTREETS'**  
Capital and Surplus, \$1,500,000.  
Offices Throughout the Civilized World

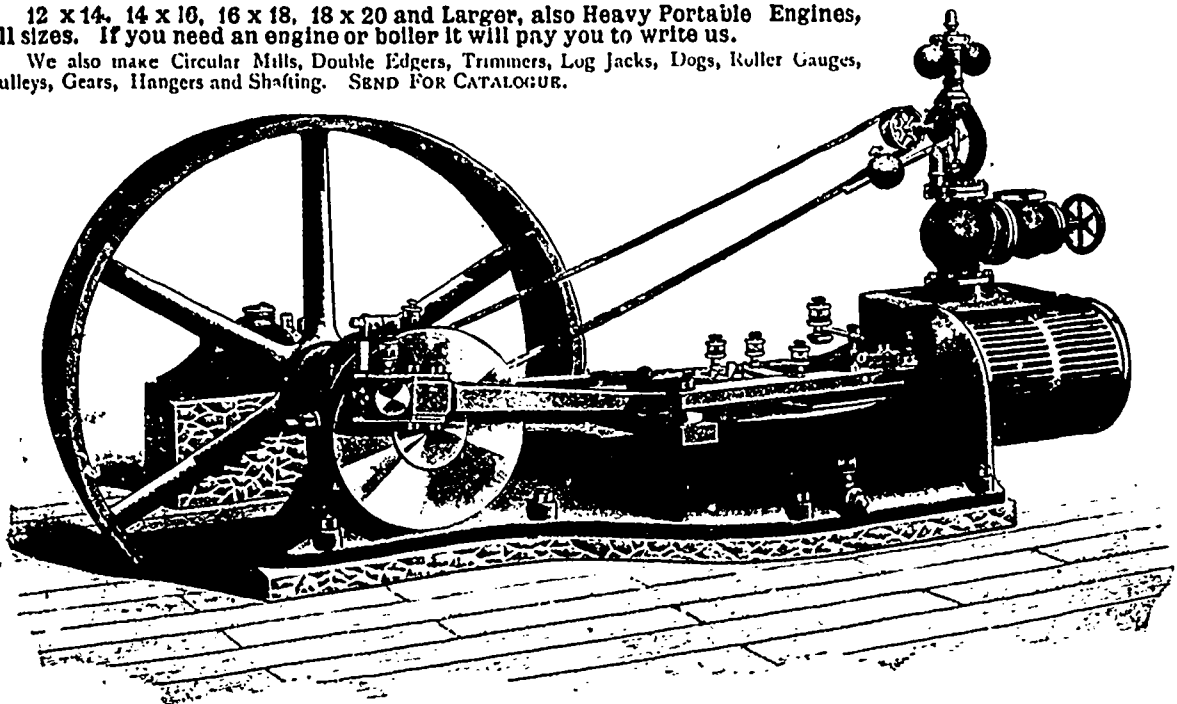
Executive Offices:  
Nos. 345 and 348 Broadway, NEW YORK CITY, U.S.A.  
THE BRADSTREET COMPANY gathers information that reflects the financial condition and the controlling circumstances of every seeker of mercantile credit. Its business may be defined as of the merchants, by the merchants, for the merchants. In procuring, verifying and promulgating information, no effort is spared, and no reasonable expense considered too great, that the results may justify its claim as an authority on all matters affecting commercial affairs and mercantile credit. Its offices and connections have been steadily extended, and it furnishes information concerning mercantile persons throughout the civilized world.  
Subscriptions are based on the service furnished, and are available only by reputable wholesale, jobbing and manufacturing concerns, and by responsible and worthy financial, fiduciary and business corporations. Specific terms may be obtained by addressing the company at any of its offices. Correspondence invited.

THE BRADSTREETS COMPANY.  
Offices in Canada: Halifax, N.S.; Hamilton, Ont.; London, Ont.; Montreal, Que.; Ottawa, Ont.; Quebec, Que.; St. John, N.B.; Toronto, Ont.; Vancouver, B.C.; Victoria, B.C.; Winnipeg, Man.  
THOS. C. IRVING,  
Gen. Man. Western Canada, Toronto.  
JOHN A. FULTON,  
Gen. Man. Eastern Canada, Montreal.

## HEAVY ENGINES FOR SAW MILL WORK.

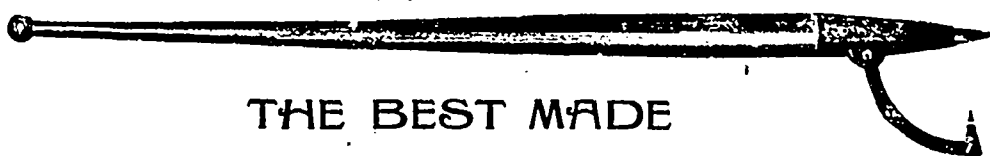
12 x 14, 14 x 16, 16 x 18, 18 x 20 and Larger, also Heavy Portable Engines, all sizes. If you need an engine or boiler it will pay you to write us.

We also make Circular Mills, Double Edgers, Trimmers, Log Jacks, Dogs, Roller Gauges, Pulleys, Gears, Hangers and Shafting. SEND FOR CATALOGUE.



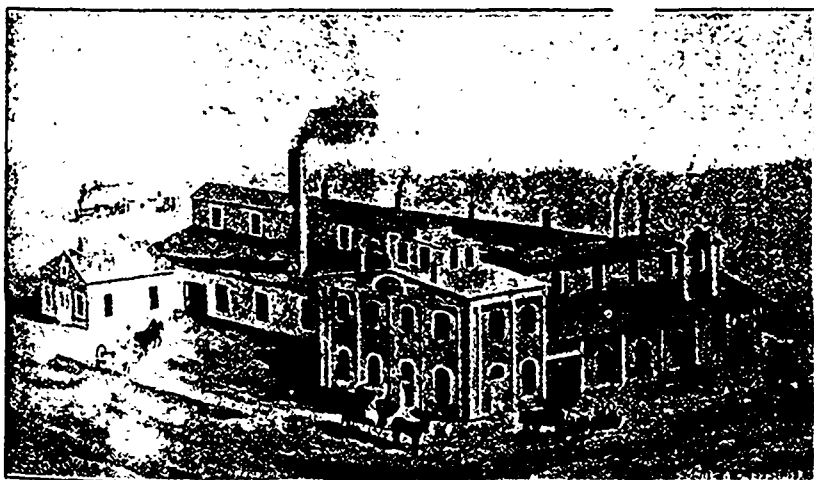
**ROBERT BELL, Seaforth Engine and Machine Works, Seaforth, Ont.**

## .. The "McFarlane" Forged Steel Socket .. CANT DOGS



THE BEST MADE

Manufactured with Round and Duck Bill Dogs .....  
The Handles used are all made from selected Split Rock Maple.  
Picks and Dogs are made from the Best Cast Steel, being forged, hardened and tempered by experienced workmen, every one warranted.



The Socket is forged Steel and welded solid to the eye, making it far superior to the Malleable Band

MANUFACTURED ONLY BY

**THE MCFARLANE-NEILL MANUFACTURING CO.**  
Limited

**ST. MARYS,**

York Co., New Brunswick, Can.

Write for quotations on Cant Dogs and Handles.