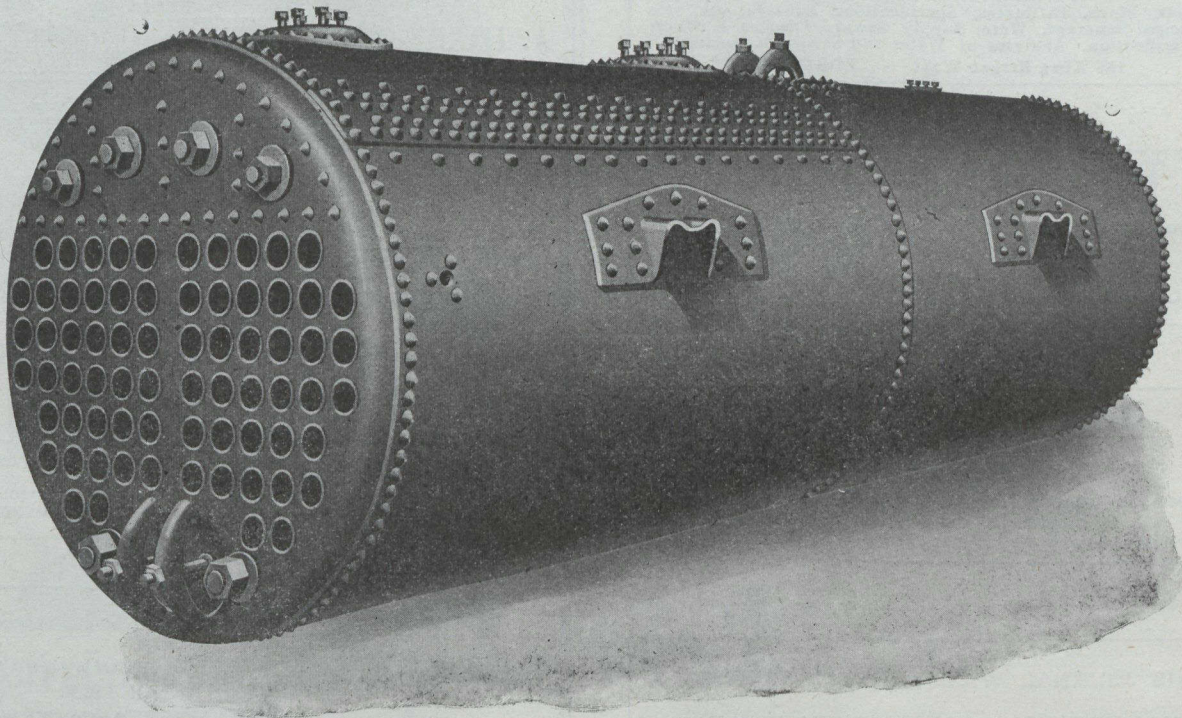


---

# BOILERS

---



## FOR Municipal Power Plants

These reasons explain why Waterous Return Tubular Boilers are installed in Canada's largest industrial municipal power plants.—

Economical Fuel Consumption.

Big Reserve Steam Pressure for Emergencies.

Easy to clean, with minimum cost for upkeep.

Built in all sizes 40 inches by 10 feet to 72 inches by 18 feet.

---

# Waterous

BRANTFORD, ONTARIO, CANADA

---