

THE
MANUFACTURERS' LIFE
INSURANCE COMPANY.

The Manufacturers' Accident Ins. Co.,
Under the same management and directorate.

Head Office: - 38 King St. E, Toronto, Ont.

Incorporated by Special Act of the Dominion
Parliament.

COMBINED AUTHORIZED CAPITAL & OTHER ASSETS
OVER \$3,000,000.

Full Deposit with the Dominion Government.

President:

Right Hon. SIR JOHN A. MACDONALD, P.C., G. C. B.
VICE-PRESIDENTS:—Sir Alexander Campbell, K.C.,
M.G., Lieut-Governor of Ontario; Geo. Gooderham,
Esq., President of the Bank of Toronto; William
Bell, Esq., Manufacturer, Guelph.

J. B. CARLILE, Managing Director.

SPECIAL PLANS OF INSURANCE.

MODIFIED NATURAL ENDOWMENT PLAN

MODIFIED NATURAL PREMIUM PLAN

Agents Wanted in Unrepresented Districts.

IF YOU REQUIRE AN
OFFICE DESK

We can suit you.

GUGGISBERG BROS.
PRESTON and GALT, Ont.

Send for our new Illustrated Catalogue and Prices.

TORONTO AGENTS:

BLACKBURN & HODGES,
3 LEADER LANE.

To Manufacturers & Wholesalers.

A gentleman residing in Winnipeg, Manitoba
who has been a number of years in the wholesale
business there, is desirous of representing a num-
ber of Manufacturers or first-class Wholesale Houses
in Manitoba and the North West. His connections
with wholesale and retail equally good.

Address, C., P. O. Box 708,
Winnipeg, Man.

THE
EQUITABLE
Life Assurance Society.

In Surplus, (namely the excess of accumulated
funds over liabilities); in Premium Income, in
the amount of Assurance in Force, in annual
New Business, the Society exceeds every other
life assurance company, and may be justly regarded
as the largest and strongest organization of its kind
in the world.

ASSETS, Jan. 1st, 1887..\$75,510,472.76

LIABILITIES, (4 per cent.

basis) 59,154,597.00

SURPLUS, (4 per ct. basis)\$16,355,875.76

Surplus, 4½ per cent. basis, \$20,495,175.76.

The Surplus, on every basis of valuation, is larger
than that of any other life assurance company in
the world.

Outstanding Assurance...\$411,779,098.00

New Assurance, 1886.... 111,540,203.00

Total Income, 1886..... 19,878,733.19

Premium Income, 1886.. 16,272,154.62

IMPROVEMENT DURING THE YEAR

Increase of Prem. Income..\$2,810,475.40

Increase of Surplus. (Four

per cent. basis) 2,493,636.63

Increase of Assets..... 8,957,085.26

H. B. HYDE, J. W. ALEXANDER,
President. Vice-Prest.

W. ALEXANDER, - - Secretary.

Quick decision in favor of COPPERINE

MACPHERSON & SCHELL,

Lumbermen and Mfrs. of

Rotary Cut Cheese Box Material, Headings Cheese

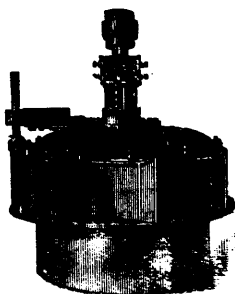
Box and Cheese Box Machinery,

ALEXANDRIA, Jan. 26th, 1888.

MR. ALONZO W. SPOONER, Port Hope.

DEAR SIR,—Enclosed you will find—Dollars in
settlement of invoice 9th inst. We used your
COPPERINE on a Saw Journal that always before ran
hot; we had the Journal turned several times locally
and also sent it to the reputed best shop in Ottawa,
and used the best Babbit we could get, but always
with the same result. Since using the COPPERINE
we have been running two weeks, and the Journal
has never got warmed up. Send us more same
kind. We are, yours respectful y.

MACPHERSON & SCHELL.



'New American' Water Wheels.

PREFERRED BY MILL EXPERTS AS THE VERY BEST.

Was selected for driving the large Keewatin Mill. Will Grind, with
Rolls, over 2 Barrels per tabled horse power.

F. P. CAVE, roller mill builder, Thistletown, Ont., writes, "She is a daisy," and
"I will not fail to recommend it to anybody in want of a water wheel."

WM. KENNEDY & SONS, Owen Sound, Ont.

MANUFACTURERS IN CANADA FOR PATENTEES.

WANTED.

By a young man who understands accounts,
a situation as bookkeeper in a law office. Mod-
erate salary. Address,

BOX 459 TORONTO.

WANTED.

By a strong and willing young man, situation as
porter in a wholesale house. Address,

Monetary Times, Toronto.

NATIONAL DETECTIVE AGENCY,

18 King St. East, Toronto,

Detect negligent and dishonest habits of employees,
apprehend fugitives from justice and absconding
debtors. Obtain evidence in intricate criminal and
civil matters.

J. S. LIZARS, Manager.

THE "MONETARY TIMES,"

This journal has completed its twentieth yearly
volume, June to June, inclusive.
Bound copies, conveniently indexed, are now
ready. Price \$3.50.

66 CHURCH ST., TORONTO.

THE POLSON IRON WORKS CO

(LIMITED)

Successors to Wm. Polson & Co. and Thos. Worswick & Co., Guelph.

WM. POLSON, Pres. & Gen. Mgr.

J. F. MACKLEM, Vice-Pres.

F. B. POLSON, Sec.-Treas.

MANUFACTURERS OF

THE BROWN & ALLAN
Automatic Engines

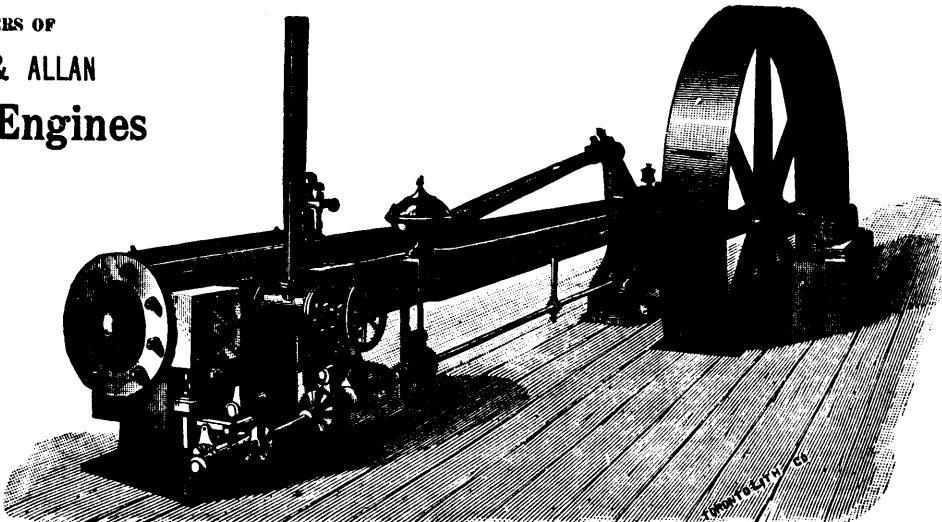
MARINE ENGINES

And Boilers.

Hoisting Engines
and Boilers.

Stationary & Vertical
Engines.

Boilers of Every
Description.



Builders of

Steam Yachts

LAUNCHES

& TUGS.

General Machinery

Dealers.

OFFICE & WORKS, ESPLANADE STREET EAST, TORONTO, ONT.
FOOT OF SHERBOURNE STREET