

Distributing and Manufacturing supply centre for the Canadian West—the World's Greatest Growing Market for Manufactured Goods of every description.

Cheap Power—varying from one-half to one cent per k.w.—from 60,000 h.p. municipally owned hydro-electric plant which also supplies domestic and commercial lighting at cost.

Plentiful and easily accessible supply of raw material—Western Labor Market—Unexcelled Railway and Banking facilities.

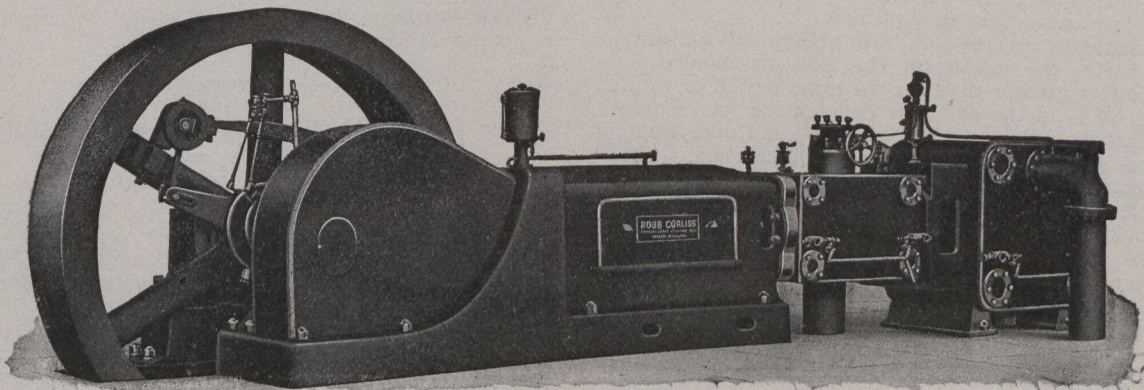
Special Reports prepared and mailed free of charge on the manufacturing possibilities of any line of industry by addressing,

CHAS. F. ROLAND, Commissioner,
Winnipeg Industrial Bureau, WINNIPEG, CANADA

100
OPPORTUNITIES
FOR
FACTORY
MEN.
WAITING

POWER TO MANUFACTURERS AT COST.

50,000 SURPLUS H.P.



Robb Corliss Engines

A simplified valve gear, multi-ported valves, short stroke and compact frame permit a much higher speed than regular Corliss gear.

Half as many parts to wear, no springs, no dash pots, no latches, no cams, no disengaging parts—but Corliss steam distribution and small clearances.

International Engineering Works, Limited

WORKS: AMHERST, N.S.

39-64

Montreal

Toronto

Winnipeg

Calgary

Edmonton

Vancouver