

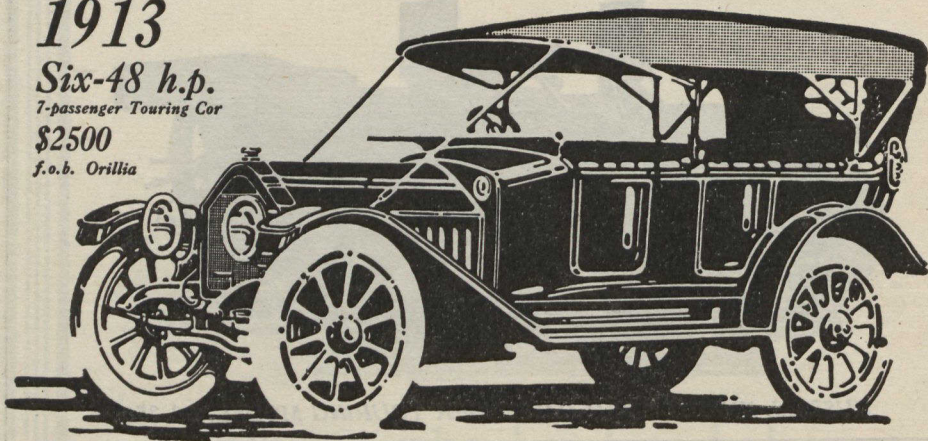
1913

Six-48 h.p.

7-passenger Touring Car

\$2500

f.o.b. Orillia



This new Torpedo-Body "Six" with its deep Turkish upholstering and Gray & Davis electric cranking and lighting system is a step ahead of anything yet offered to the

THE "SIX"

Electric Lighting
Electric Cranking
(both Gray & Davis equipment)
Long Stroke Motor
127-inch wheel-base
36 x 4½ inch Tire
Turkish Cushions
Trufault Hartford
Shock Absorbers
Floating Type Rear Axle
Demountable Rims

Canadian buyer for 1913. The big features that spell comfort are there: Large, luxurious tonneau comfort for 7 passengers: Hardly a quiver from the silent, smooth-running engine: Power—more than you need. The details are right, too (see the list). ¶ Building in Canada puts this car on the market at a fair price. The 35% saved in duty goes into car value—greater strength of frame—superior construction of axles (front, Timken Roller Bearings; rear, floating type)—exact inspection and machining of the motor and running parts.

"The Car Ahead"

Tudhope

THE "FOUR"

Gray & Davis Electric
Lights
Long Stroke Motor
Dual Ignition
Demountable Rims
EXTRA TIRE
carried at rear
Double-drop Frame
115-inch Wheel-base

The same applies to the 1913 "Four." On its specifications, finish and equipment, the \$1,625 Tudhope Four should sell at \$2,200. It has Gray & Davis Electric Light system, full elliptic Vanadium steel springs, large wheels, long wheel-base and a smooth-running powerful motor.

The equipment of all Tudhope Cars is more than usually complete and of the highest quality. Every car has a Speedometer, English Mohair Top, concealed horn, a clear vision windshield and an EXTRA TIRE, RIM and Cover all carried at rear.

Investigate these Canadian Cars. Get the 1913 Tudhope Book and see the special values we offer.

541M

THE TUDHOPE MOTOR CO., LIMITED
ORILLIA CANADA

Branches at Toronto, Ont., Hamilton, Ont., St. John, N.B. Winnipeg, Regina, Saskatoon, Calgary, Swift Current, Brandon, Lethbridge, Vancouver.