

"This Space Reserved For The

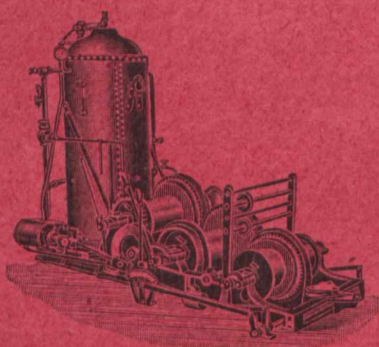
# INNER BOND STEEL BAR FOR CONCRETE REINFORCEMENT

**ARTHUR PRIDDLE, Wholesale Distributor,**  
185 Stevenson Street, **SAN FRANCISCO, California."**



Our Book Department can furnish any book on engineering published. Send for our latest list.

**M. Beatty & Sons, Limited, Welland, Ont.**



MANUFACTURERS OF

Dredges, Ditchers,  
Derricks, Steam Shovels,  
Submarine Rock Drilling Machinery,  
Centrifugal Pumps for Water and Sand,  
Stone Derricks, Clam-Shell Buckets,  
Steel Skips, Coal and Concrete Tubs,  
and other Contractors' Machinery

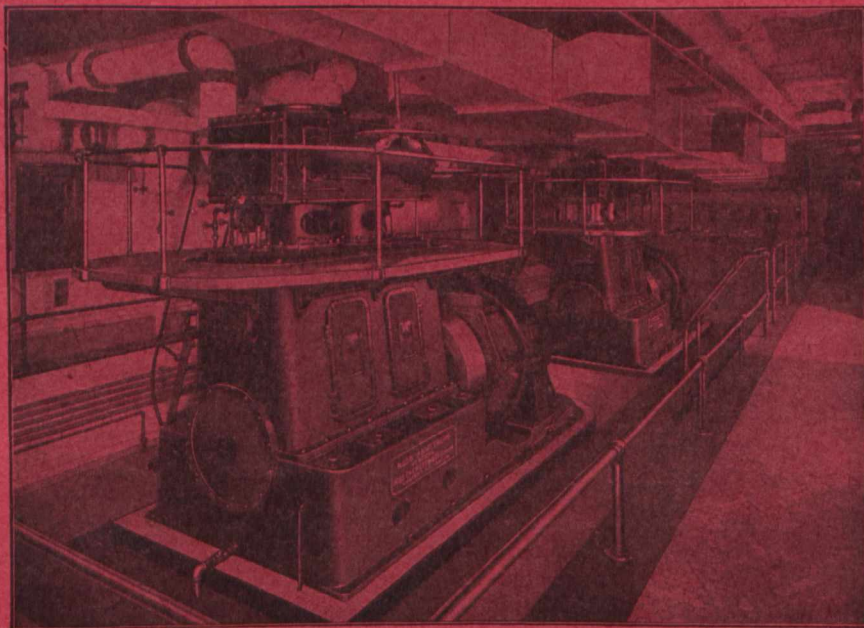
AGENTS

E. Leonard and Sons, Montreal, Que. and St. John, N. B. R. Hamilton & Co.  
Vancouver B.C. Canadian Fairbanks Co., Toronto, Ont. and Winnipeg, Man.

## High Speed Vertical Engines

OF THE ENGLISH ENCLOSED TYPE, WITH PRES-  
SURE OILING SYSTEM, INSTALLED BY US AT THE

**TRADERS BANK, TORONTO**



**ROBB ENGINEERING CO., Limited**  
**AMHERST, N. S.**

DISTRICT  
OFFICES

{ Traders Bank Building, Toronto, WILLIAM McKAY, Manager  
Bell Telephone Building, Montreal, WATSON JACK, Manager.  
Union Bank Building, Winnipeg, J. F. PORTER, Manager.

## THE CANADIAN ENGINEER

reaches weekly the  
LEADING Civil, Mech-  
anical, Railroad, Muni-  
cipal and Provincial  
Works Engineers and  
Engineering Contractors  
in ALL parts of Canada  
and many points in the  
United States and  
Europe.

**All Its Readers  
are Buyers**

THE MODERN JOINTING  
FOR WATER AND GAS MAINS

**LEAD WOOL**

"SHREDDED LEAD"

Made in England



A Strand of Lead Wool coiled up for transit

**JOHN GARDE & CO.**

142 Victoria Street, TORONTO, ONT.

Phone Main 4923

"Just around the corner from Queen and Yonge"

**Sole Distributors in Canada for the  
British Manufacturers**