

## CENTRAL EXPERIMENTAL FARM NOTES—II.

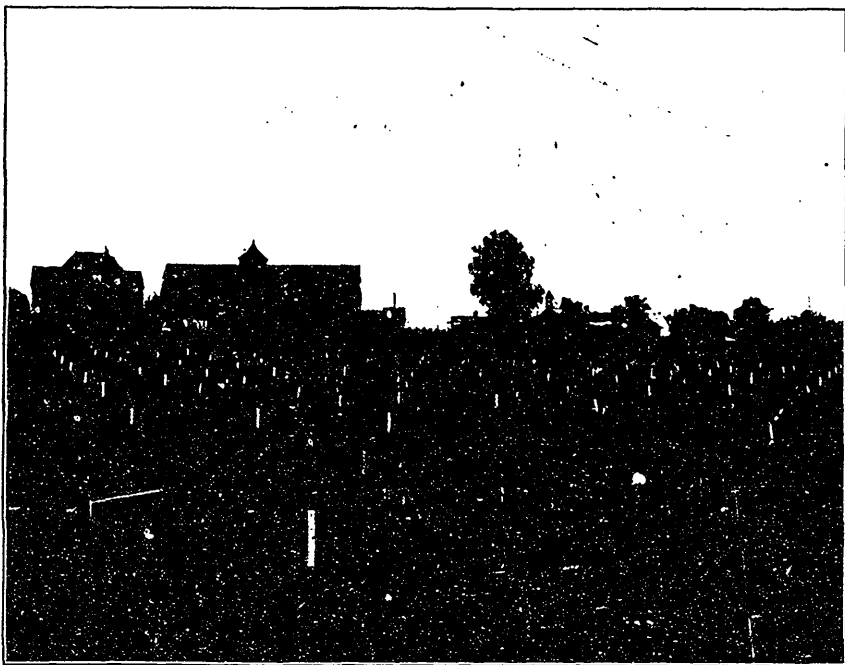


FIG. 1682 —STRAWBERRY PLANTATION, CENTRAL EXPERIMENTAL FARM.

**T**HE first frost to seriously check vegetation occurred at Ottawa on the 23rd of September, when the tomatoes, cucumbers, melons, squash and other tender things were killed. This frost was followed on the 2nd of October by one much more severe. The thermometer only showed four and a half degrees of frost, but the ground was frozen about three fourths of an inch deep; the leaves on the grape vines were killed, and the fruit, of which there was a large quantity unpicked, was much injured. While it was thought that not more than twenty-five varieties of grapes would ripen thoroughly, more than 50 sorts have matured. The Moyer grape, of which mention is

made in the October number of *THE CANADIAN HORTICULTURIST*, is certainly a very desirable variety to plant for home use in the colder parts of the country. This year, it ripened on the 23rd of September, while Delaware, one of its parents, was not ripe until the 5th of October, and then unevenly. Of white grapes, the first to ripen was Golden Drop, on the 17th of September. This is a small sweet grape, lacking in character, but a sure ripener here. Moore's Diamond, a grape of high quality, is, however, probably the best white variety to plant. It usually ripens early, but owing to the unfavorable season this year it did not mature until the 5th of October. It was interesting to note the order of ripening of the dif-