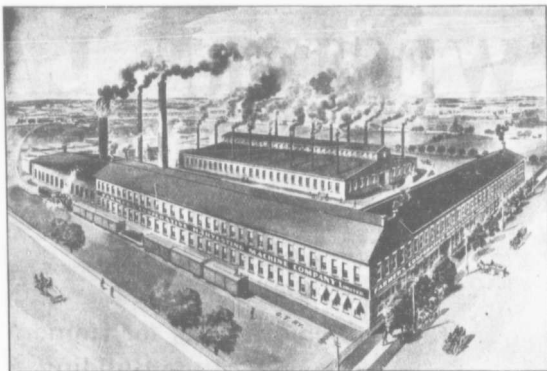


**SEND \$1.00**

to the Farmers' Co-Operative Harvesting Machine Co., Limited, Whitby, Ont. For this sum **THE FARMING WORLD** and the **Toronto Weekly Globe** will be sent to you

**For One Year**



Works of the Farmers' Co-Operative Harvesting Machine Co., Limited, Whitby, Ont.

This is a cut of our

## DISC HARROW

which we are making in **Eight Different Sizes**, equipped for 2, 3 or 4 horses.

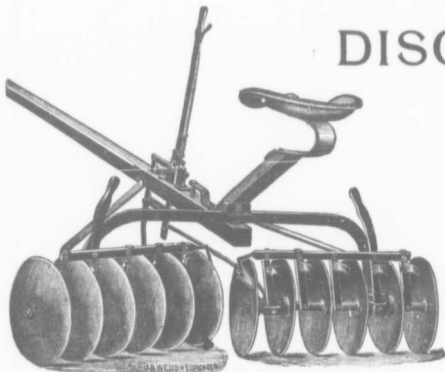
### PRICES FOR ONTARIO

	CASH
12 disc, 16 in. dia., 2 horse equipment.....	\$28
14 disc, 16 in. dia., 2 horse equipment.....	30
16 disc, 16 in. dia., 2 and 3 horse equipment..	33
12 disc, 18 in. dia., 2 horse equipment.....	30

### EXTRA HEAVY MACHINES

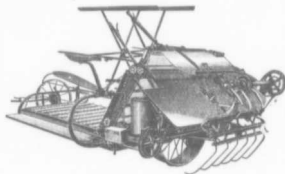
14 disc, 18 in. dia., 2 and 3 horse equipment..	\$35
16 disc, 18 in. dia., 4 horse equipment.....	40
14 disc, 20 in. dia., 4 horse equipment.....	43
16 disc, 20 in. dia., 4 horse equipment.....	46

In districts where we are represented by an agent, a discount of \$3 will be allowed to shareholders, and where we are not represented by an agent, a discount of \$5 will be allowed.



## CLOKEY BINDER FOR 1907

Drive wheel 37 1/2 in. diameter. First drive chain exceptionally heavy and long. Cross shaft in rear of elevator chain. Main frame of exceptional strength. Serrated ledger plates. Roller and ball bearings throughout. Table held perfectly rigid by a steel tube. Perfectly floating upper elevator. Binder decks very steep. Three packers. Stark knottor with patented adjusting points. Twine box in rear of machine. No slack twine. Double bearing butter crank. Reel especially rigid and gear driven. Bundle carrier of usual pattern, but operated from the rear of the machine. No neck weight. No side draft even on a 7-foot machine. Large range of raise and lower. Great forward and backward movement of binding attachment. Levers within easy reach and perfect in operation. Exceptionally light draught.



## BINDER TWINE

As our ambition is to serve the farmers, they should send their orders for Binder Twine to this Company. We can furnish a first-class article at the least possible cost.

IF INTERESTED, ADDRESS

**Farmers' Co-Operative Harvesting Machine Co., Ltd.**  
**WHITBY, - ONTARIO**