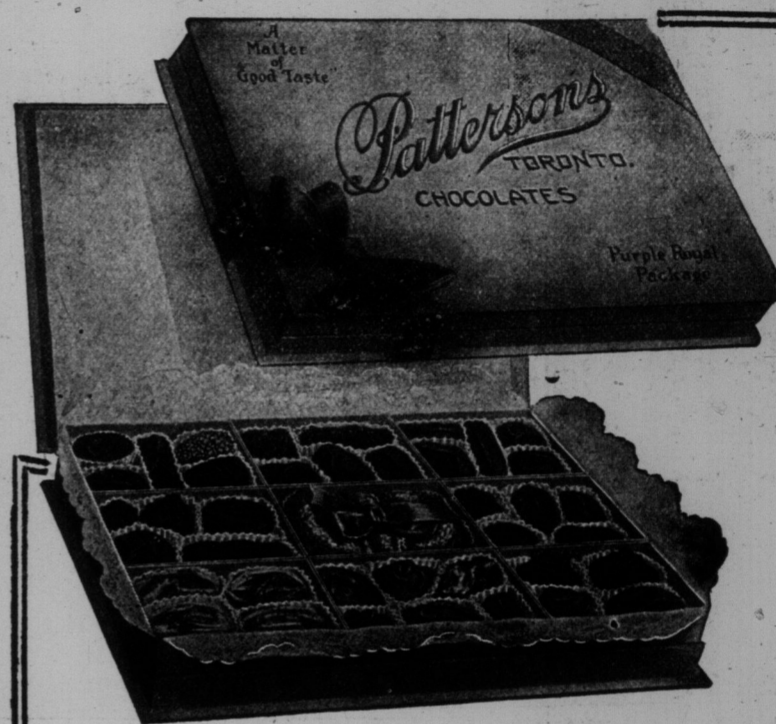




PART OF OVERFLOW ON FIELD AT OPENING OF THE BASEBALL SEASON.



REPRESENTATIVES OF THE BRITISH EMPIRE AND THE CITY OF GHENT ON THE STEPS OF NEW YORK'S CITY HALL, WHERE THEY CALLED ON MAYOR GAYNOR. THEY ARE IN NEW YORK TO ARRANGE WITH CONFEREES OF THE UNITED STATES FOR A CELEBRATION OF THE CENTENARY OF THE SIGNING OF THE TREATY OF GHENT IN 1812. THE CANADIANS IN THE PICTURE ARE SIR EDMUND WALKER, C. A. MAGRATH AND C. F. HAMILTON.



"A Matter of Good Taste"

Purple Royal Chocolates

You will appreciate the novelty of the box of chocolates in which no two pieces are alike.

Happy expectation awaits the tasting of each dainty confection in the Purple Royal box—follow-

ed by a thrill of delighted surprise at the new and subtle flavors we have devised.

\$1.50 for the Pound Box

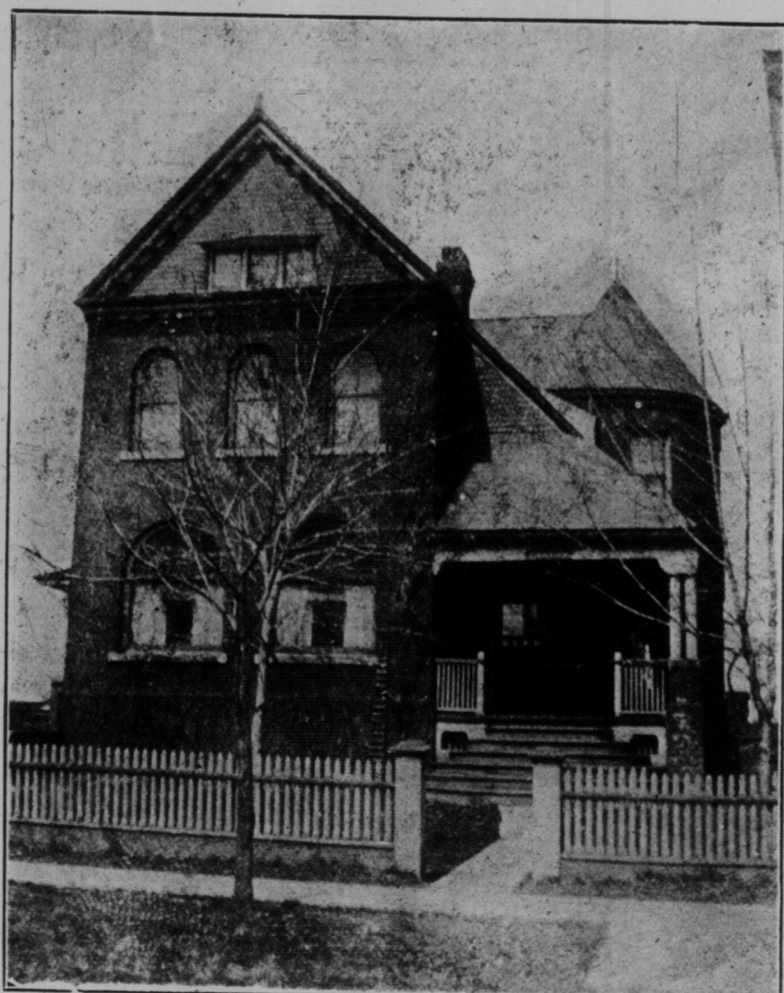
The Costliest Chocolates, But Well Worth the Price

Patterson's TORONTO



REID'S REAL BENGALENE TIES
THE ARISTOCRAT OF NECKWEAR

Prophylactic Tooth Brush
Ask your druggist for "the brush in the yellow box"—he knows



Suburban home in Mimico, 5 minutes' walk from electric cars, two minutes from G. T. R. Station. Solid brick, ten-roomed house, slate roof, attic, concrete divided cellar, hot water heating, Siche gas plant and fixtures, wide verandahs, concrete walk, nearly an acre of ground, large lawn, numerous fruit and ornamental trees, hedge, vines, flowering bushes and shrubs, barn, chicken houses and other out-buildings, in first-class condition. To be sold to close estate. Phone Parkdale 2116.

The Assuan dam and other irrigation works in Egypt have cost \$53,000,000; but the increase in the value of land in middle and lower Egypt has been from \$95,000,000 to \$2,400,000,000. The total rent of this land has given from \$82,000,000 to \$190,000,000. Concrete telegraph poles are now made in conveniently sized sections and put together at the point of erection. One section is placed on another until the desired height is reached, and then a re-inforcement of pipe is driven thru them.

"THE CAR OF REFINEMENT AND RELIABILITY"

WOLSELEY CARS IN SOUTH AFRICA

THE "WOLSELEY" TORPEDO TOURING CAR

MODERN in design and beautifully proportioned, with flush sides, deep scuttle, dash and low seats, this model reflects the incomparable quality which is inseparable from the name of "WOLSELEY." The steering column is raked in conformity with the low seats, which are provided with removable leather cushions of highest quality and resiliency. Prices, fully equipped, including spare wheel with tire, bracket and dust excluder, \$3,800, \$5,000, \$8,300. Other types of open cars from \$3,600. We court investigation of the many features which have created WOLSELEY prestige. Trial runs available to anyone interested. A complete stock of spare parts is carried at the Canadian headquarters in Toronto.

The Canadian Depot is owned and operated by the Wolseley Company. Head Office and Works: Adderley Park, Birmingham, England.

1913 Catalogue of WOLSELEY Cars mailed upon request.

THE WOLSELEY TOOL MOTOR CAR CO. LIMITED
61 AVENUE ROAD TORONTO