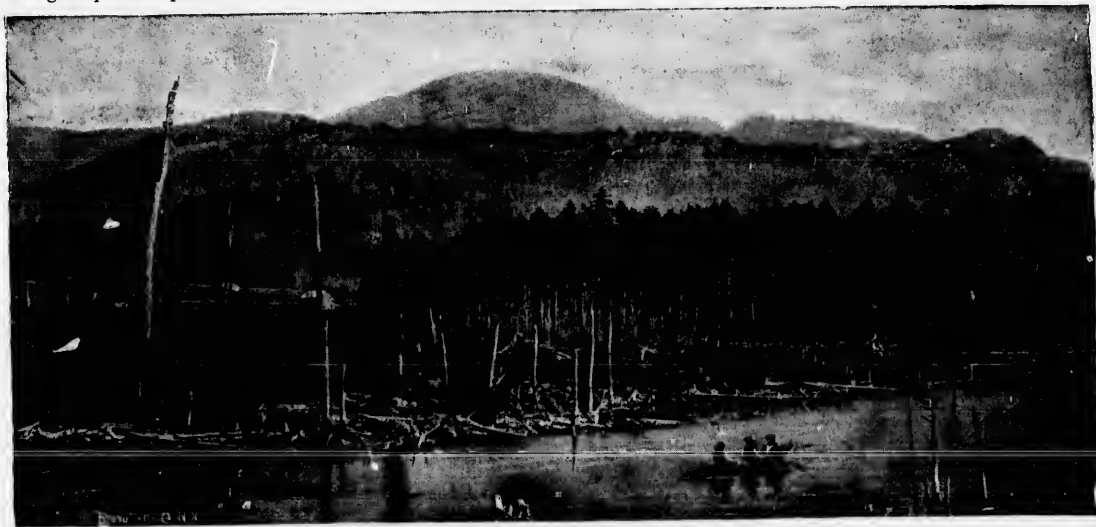


GIBRALTAR POINT is the commanding promontory of table-land flanked by the lake on the east and by Sargent's Bay on the south-west. A company of Montreal capitalists undertook to make it a fashionable resort, and built a large hotel and many cottages upon the plateau, but before they were completed disaster came and the property has since remained in *statu quo*.



MOUNT ORFORD.
(67)