



FIG. 14.

No. 3235.—MISSY'S SUIT. PRICE, 25 CENTS.

Quantity of Material (24 inches wide) for

27 inches, 4½ yards; 28 inches, 5½ yards; 29 inches, 6½ yards; 30 inches, 7½ yards; 31 inches, 8½ yards; 32 inches, 9½ yards.

Quantity of Material (12 inches wide) for

27 inches, 8½ yards; 28 inches, 9½ yards; 29 inches, 10½ yards; 30 inches, 11½ yards; 31 inches, 12½ yards; 32 inches, 13½ yards.

Material for underskirt (Cambric, 27 inches wide), 2½ yards.



FIG. 20.

No. 3229.—MISSY'S DRESS. PRICE, 21 CENTS.

Quantity of Material (24 inches wide) for

27 inches, 2½ yards; 28 inches, 3½ yards; 29 inches, 4½ yards; 30 inches, 5½ yards; 31 inches, 6½ yards; 32 inches, 7½ yards.

Quantity of Material (12 inches wide) for

27 inches, 5 yards; 28 inches, 6 yards; 29 inches, 7 yards; 30 inches, 8 yards; 31 inches, 9 yards; 32 inches, 10 yards.



FIG. 43.



FIG. 45.



FIG. 19.

No. 3033.—MISSY'S PLEATED WAIST. PRICE, 25 CENTS.

Quantity of Material (24 inches wide) for

27 inches, 2½ yards; 28 inches, 3½ yards; 29 inches, 4½ yards; 30 inches, 5½ yards; 31 inches, 6½ yards; 32 inches, 7½ yards.

Quantity of Material (12 inches wide) for

27 inches, 5 yards; 28 inches, 6 yards; 29 inches, 7 yards; 30 inches, 8 yards; 31 inches, 9 yards; 32 inches, 10 yards.

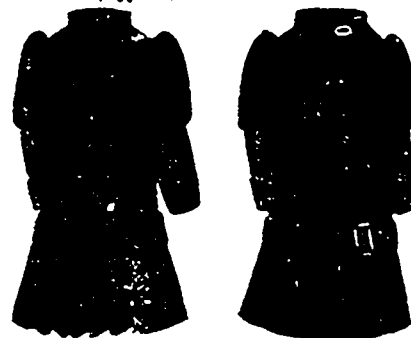


FIG. 16.

No. 3222.—GIRLS' COAT. PRICE, 20 CENTS.

Quantity of Material (24 inches wide) for

27 inches, 2½ yards; 28 inches, 3½ yards; 29 inches, 4½ yards; 30 inches, 5½ yards; 31 inches, 6½ yards; 32 inches, 7½ yards.

Quantity of Material (12 inches wide) for

27 inches, 5 yards; 28 inches, 6 yards; 29 inches, 7 yards; 30 inches, 8 yards; 31 inches, 9 yards; 32 inches, 10 yards.



FIG. 15.

No. 3220.—GIRLS' DRESS. PRICE, 20 CENTS.

Quantity of Material (27 inches wide) for

27 inches, 2½ yards; 28 inches, 3½ yards; 29 inches, 4½ yards; 30 inches, 5½ yards; 31 inches, 6½ yards; 32 inches, 7½ yards.

Quantity of Material (12 inches wide) for

27 inches, 5 yards; 28 inches, 6 yards; 29 inches, 7 yards; 30 inches, 8 yards; 31 inches, 9 yards; 32 inches, 10 yards.

No. 3228.—GIRLS' DRESS. PRICE, 20 CENTS.

Quantity of Material (24 inches wide) for

27 inches, 2½ yards; 28 inches, 3½ yards; 29 inches, 4½ yards; 30 inches, 5½ yards; 31 inches, 6½ yards; 32 inches, 7½ yards.

Quantity of Material (12 inches wide) for

27 inches, 5 yards; 28 inches, 6 yards; 29 inches, 7 yards; 30 inches, 8 yards; 31 inches, 9 yards; 32 inches, 10 yards.

No. 3234.—GIRLS' SUIT. PRICE, 20 CENTS.

Quantity of Material (24 inches wide) for

27 inches, 2½ yards; 28 inches, 3½ yards; 29 inches, 4½ yards; 30 inches, 5½ yards; 31 inches, 6½ yards; 32 inches, 7½ yards.

Quantity of Material (12 inches wide) for

27 inches, 5 yards; 28 inches, 6 yards; 29 inches, 7 yards; 30 inches, 8 yards; 31 inches, 9 yards; 32 inches, 10 yards.



FIG. 17.

No. 3226.—GIRLS' DRESS. PRICE, 20 CENTS.

For Quantity, see Fig. 15.

FIG. N
cents, fu
costume,
in good
pleating
loosely a
draped d
with ext
the basq
vest of
points,
or may
braid.
three ro
match th

FIG. 3
this littl
3234, p
pleated
with a B
collar al
lar ends
is drape
the back
straps of
ing colle
are sim
flannel s
after thi
20 cents
dress of
any cott
ing trim
trasting
plain, b
sleeves,
plain, r
tucks;
velvet i
in the b
erated v
velvet a
same fa
similar:
When n
broider
ture. 7
No 3226
pretty f
skirt is
olged
snug-fit
straight
sleeves
a point
flambu
is sewe

FIG. 1
suitable
too wat
the clo
pose ca
back is
waist,
fronts:
vet bel
tab but
sleeves
effect a
ment.

FIG. 1
is equa
brics, f
and fi
price 2
illustr
fitting
part c
with p
the sid
ravell
ing col
are of
goods;
the pla

FIG. 1
ially
forms
goods,
accord
and bs
cotton
belt) t
carefu
collar
nd th
bow o
belt of
latter

FIG. 1
won, c
ish de
and c
Our i
y. lin