

A  
VALVE  
YOU  
CAN  
RELY  
ON  
—  
SEND  
FOR  
PRICES

## CROSBY STEAM APPLIANCES EXCEL

Steam Engine Indicators.  
Recording Gages.  
Revolution Counters.  
Pressure and Vacuum Gages.  
Lubricators, etc.



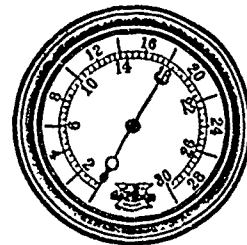
Stationary and Marine Valves.  
Water Relief Valves.  
Blow-off Valves.  
Globe and Angle Valves  
Single Bell Chime Whistles.

SEND FOR CATALOGUE

**CROSBY STEAM GAGE and VALVE CO.**

BOSTON, NEW YORK, CHICAGO, LONDON

A TRUTHFUL GAGE  
IS THE  
ONLY GOOD GAGE



foundry, engine and machine shops and boiler shops, capable of turning out the highest types of engines and boilers, and expects to have these completed and in operation within twelve months.

The situation of Collingwood for repairing damaged ships is particularly good. It has on the west of it Owen Sound and Meaford, and on the east Parry Sound, Depot Harbor, Midland and Penetanguishene, and as the shipping to the Georgian Bay must come to some one or all of these ports, it will be an easy matter for all to come to Collingwood for repairs when needed.—Toronto Globe.

### BUFFALO IMPROVED VENTILATORS.

The Buffalo Forge Co., Buffalo, N.Y., have sent us a copy of their new catalogue having reference to their Improved Ventilators, and inform us that there has been so great a demand for these venti-

lators that their previous catalogue had become exhausted, necessitating the getting out of another.

In describing this ventilator we are informed that the action of it depends upon two principles:

First.—The difference in weight between an air column having a diameter equal to that of the ventilator and a height equal to the distance between the top of the ventilator and the floor, at whatever temperature the air may be, and the weight of an air column of equal dimensions and at the outside temperature.

Second.—The ventilator is so designed that any movement of the outside air across the top of the ventilator causes an upward flow of the air in the ventilator. The wind may blow from any direction and yet the induced draft is produced through the ventilator, and carries away the hottest inside air, because it is next to the ceiling.

This ventilator, while it offers a free exit, prevents any back currents. It will effect an induced draft whenever the temperature of the inside and outside of the building is not the same. It is absolutely storm and rain-proof.

Illustrations are shown which give a good idea of the two methods of placing or fastening the improved ventilator caps to a chimney, both of which are thoroughly practical, economical and durable. The bases are made of heavy galvanized iron, with an inside or outside flange arrangement, made to fit closely to the chimney. This insures the absence of any possible dead air space, and better protects the chimney against the effects of frost, snow, rain and storm. Either flange arrangement will at once make it impossible for any rain, snow or dampness to get on the inside of the chimney. The outside flange arrangement, which fits tight over the entire top of the chim-

# COWAN & CO., of GALT, LIMITED

"GALT FOUNDRY"

ENGINE and MACHINE WORKS

GALT, - CANADA

## Wood-Working Machinery

PATENT FEED WATER HEATERS AND PURIFIERS

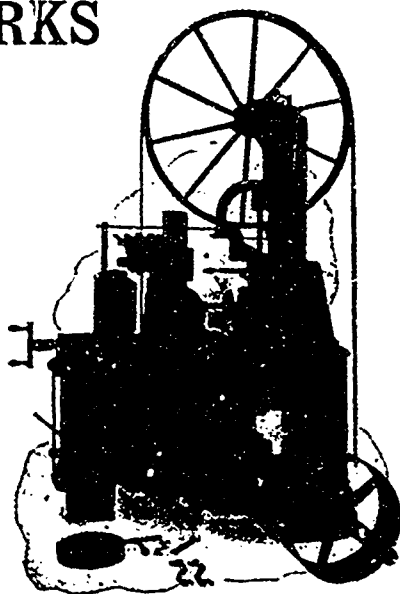
ENGINES, BOILERS

....AND....

## Saw Mill Machinery

ETC., ETC.

... SEND FOR CATALOGUE ...



No. 1.  
BAND RE-SAW.

When writing to Advertisers kindly mention THE CANADIAN MANUFACTURER.