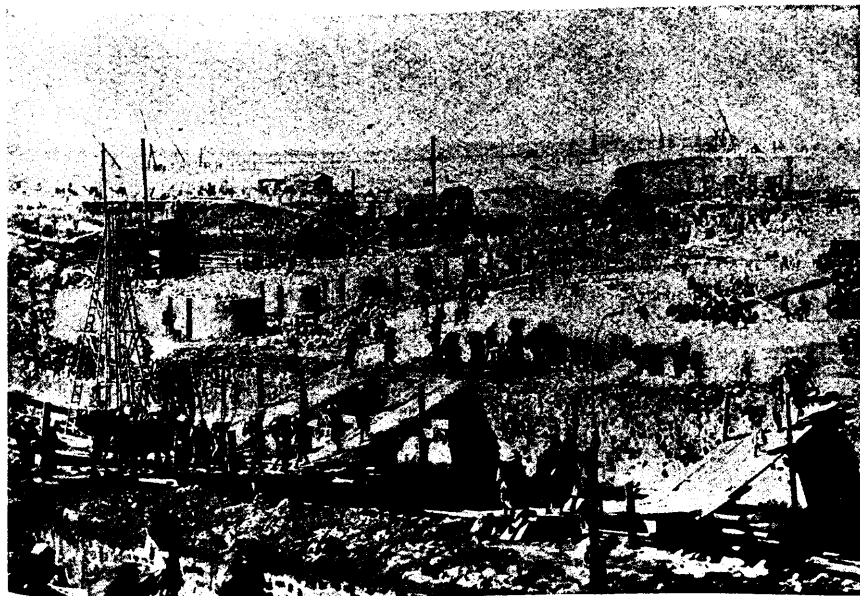


ILLUSTRATED LONDON NEWS.

ASSIOUT ON THE NILE: VIEW FROM THE WEST LOCK WALL, SHOWING  
THE UP-STREAM SIDE OF THE PIERS.

the Woolf and the Eddystone lighthouse. The fleet was sailing in four lines, one of which was headed by the *Sanspareil* battleship. By some misadventure the battleship came in collision with the *East Lothian*, a Glasgow ves-

sel of 1387 tons, bound from Nantes to Cardiff. It appears that the merchant vessel was not observed on the battleship, although the captain and mate seemed to have shouted an alarm. The *Sanspareil* cut deeply into the *East*



ILLUSTRATED LONDON NEWS.

VIEW LOOKING WEST FROM THE LAST WORKS OF THE PRESENT SEASON.