

**Re-Opening Announcement.**

The St. John's Meat Co. beg to advise the public they will re-open their Store on Water Street West on Saturday, February 22nd, with well selected stock of Prime Beef, Mutton, Pork, etc., at our usual keen prices. The Store will be under the competent management of ex-R. S. M. Patrick, and patrons are assured every attention. We thank our customers for their former patronage and hope to merit their further support.

**St. John's Meat Co.**  
feb20,21

**The Emerson Piano.**

Established in 1849. Newfoundland Agency established

**37 YEARS AGO.**

Pianos now in use in St. John's sold 37 years ago, showing their wonderful lasting quality.

**A SHIPMENT JUST IN.**

Come to our Showrooms and see them. Best prices. Best terms.

**CHARLES HUTTON.**

We are still showing a splendid selection of

**Tweeds and Serges.**

No scarcity at

**Maunder's.**



**John Maunder,**  
Tailor and Clothier, St. John's, Nfld.

**Fishermen, Buy Your Engine Now.**

**Lathrop Marine Engines**  
for immediate delivery.

Prices will be higher in the spring. We have a full lines of

STATIONARY ENGINES.  
SAW MILL MACHINERY.  
COOPERAGE MACHINERY.  
HEAD ROUNDERS, ETC., ETC.

**A. H. MURRAY & CO.,**  
Limited.



**NO MATTER HOW THE FIRE IS CAUSED**

If you're not insured, you're a loser. Take time to see about your policies. We give you the best companies and reasonable rates.

**PERCIE JOHNSON**  
Insurance Agent.

Advertise in The Telegram

**The City Directory**

is used by the public daily. One who does not ADVERTISE in this

**Book of Information**

loses the opportunity of being a member of the

**"Public Family."**

feb21,21

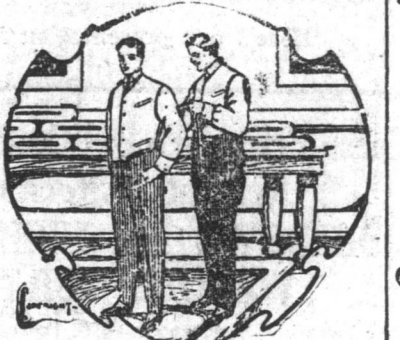
**The First Principle of Modern Business is SERVICE.**

That is where we shine.

Good Goods well made, moderately priced, and honest effort made to deliver on time. Expert accounting and satisfactory settlements of all claims.

The biggest clothing manufacturing organization in Newfoundland backs up its claim for Superior Service.

WHOLESALE ONLY.



**Newfoundland Clothing Co., Ltd.**  
mar6,eod,tf

**Hay! Hay!**

Just Landed:

**1000 Bales Good Hay**

**George Neal.**

**JUST ARRIVED!**

**Windsor Salt,**  
all sizes. Also

**Regal,**  
in Cartons.

**T. A. Macnab & Co.,**  
Tel. 444. City Club Building.

**BOOT BARGAINS.**

We are offering a special line of

LADIES' BLACK LACED and BUTTONED

**Dongola Boots, at \$4.20 per pair.**

A stylish, comfortable and durable Boot and just the kind for present wear.

**WILLIAM FREW, Water St.**

Forty Years in the Public Service the 'Evening Telegram.'

**NEYLE'S**

Per S. S. Adolph, Feb. 14:

**HORSE SHOE NAILS.**  
50 boxes, sizes 6, 7, 8.

**SLIDE SHOES.**  
6 feet x 18 x 1 1/4 inch  
6 feet x 18 x 1 1/2 inch  
6 1/2 feet x 18 x 1 3/4 inch  
6 1/2 feet x 18 x 2 inch  
7 feet x 18 x 2 inch

**SHOE TACKS.**  
1 1/2, 2, 2 1/2, 3 and 4 oz.

**ENGLISH GOODS.**  
Hemp Sed Line.  
Hemp Shore Line.  
Head Ropes.  
Seaming Twine.  
Genging Twine.  
White Cotton Herring Twine in 1/4 lb. hanks.

**SOLE LEATHER**  
by the strip.

**AMERICAN STEAM TARRED LINES,**  
sizes from 2 to 20 lbs. per doz.

**AMERICAN 15 THREAD COTTON TWINE.**

**AMERICAN 9 THREAD COTTON TWINE.**

**HARNESS.**  
PONY BUGGY HARNESS, \$30.00 a set.

**ROUND EYE WINKERS. CANVAS COLLARS. CHECK LINED COLLARS. DUCK LINED COLLARS.**

**CARRIAGE, SLIDE and CART HARNESS** made to order.

**FLASH LIGHTS.**  
Round, Small.  
Round, 2 Cell.  
Round, 3 Cell.

**BATTERIES.**  
Round, Small.  
Round, 2 Cell.  
Round, 3 Cell.

**Neyle's Hardware,**  
WM. SOPER, Manager.

**J. J. ST. JOHN.**  
All Ready for You, Mr. Man!

3000 brls. FLOUR— Best brands; some white while it lasts.  
210 brls. HAM BUTT PORK at \$44.00 brl.  
185 brls. BEST BONE-LESS BEEF — Very tender.  
65 brls. SPARE RIBS.  
130 puncheons and brls. Very Best MOLASSES — Grocery and Fancy.  
500 bags PURE WHITE CORN MEAL, Table.  
350 bags YELLOW FEED MEAL.  
2000 bags CATTLE FEED from \$4.50 bag.  
95 Half Chests TEA— Great value.  
And a full line of GROCERIES at Bottom Prices.

**J. J. ST. JOHN.**  
136 and 138 Duckworth St.

**MOURNING STATIONERY.**

Fine Linen finish, narrow border,  
In Boxes of 24 Sheets of Paper and 24 Envelopes, 60c and \$1.00 per Box.  
Paper only, 50c quire.  
Envelopes only, 50c.  
Packages of 25. Postage extra.

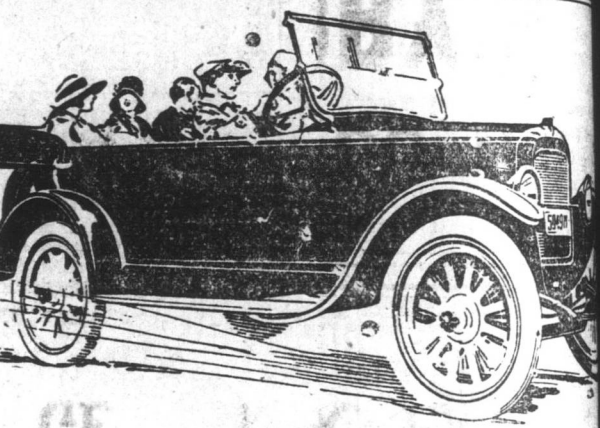
**DICKS & CO., LTD.,**  
Your Stationers.  
MINARD'S LINIMENT CURES DIS-TEMPER.

**Reid-Newfoundland Company**

**S.S. "KYLE"**

will sail from Placentia direct for North Sydney or Louisburg, about Sunday next, taking passengers. Special Train to Placentia to connect will be advertised later.

**Reid-Newfoundland Company**



**BRISCOE,**  
With full equipment and ready for the road,  
**\$1,550.**

Order early and avoid disappointment. A large supply of Parts, combined with twelve years' experience, guarantee satisfaction. Catalogue on request.

**GEO. G. R. PARSONS**  
GARAGE, KING'S ROAD.

**HAVE YOU TRIED**

**LIBBY'S**

**CORNED BEEF HASH**

Sold in 1-lb. and 2-lb. Cans

**BY ALL GROCERS**

**SLATTERY'S**  
Wholesale Dry Goods

Now offering to the Trade and Outport Dealers the following

**AUTUMN GOODS:**

POUND PERCALES SHIRTS  
POUND SATEENS DRESS GOODS  
DENIMS DRESS GOODS  
COTTON CHECKS PLAID DRESS GOODS  
POUND UNDERWEAR BLOUSES  
TOWELINGS FLANNELLETTE OVERALLS

EVERY DAY GOODS ARRIVING.

**SLATTERY BLDG., Duckworth & George St.**

VE PAGES TO-DAY THE  
WEATHER FORECAST.  
TO, Noon.—Moderate winds,  
and on Sunday; not much  
temperature.  
& THOMPSON—Bar. 29.70;

VOLUME XLII.  
**Use**

FOR SALE.  
**HOOP IRON.**  
from 1" to 2", splayed and unsplayed; also  
**and Spruce Sticks,**  
15 to 25 feet long, suitable for stake or wharf building.  
all sizes.  
**SPRINGDALE STREET.**  
**ARRIVED EX "Sheba".**  
CANADIAN HAY.  
CORN.  
CANADIAN CHEESE.  
**M. A. BASTOW,**  
304. Beck's Cove.

**NOTICE.**  
is hereby given that Charles...  
S. J. FOOTE,  
Solicitor for Patentee.  
Commercial Chambers,  
St. John's, Feb 15, 1915.

**NOTICE.**  
Excellency—the Governor, as  
of the Patriotic Association,  
charge of the power vested in  
appointed the following Com-  
to consider the question of a  
War Memorial and to report.  
Malne Grieve, Esq., C.B.E.,  
Chairman.  
Honorable W. J. Ellis,  
Honorable R. A. Squires,  
Harvey, Esq.,  
Edens, Esq.,  
Bald Macpherson, Esq.,  
W. W. Blackhall, M.B.E.,  
Levi Curtis, M.B.E.,  
V. P. Burke, M.B.E.,  
McKay, Esq.,  
Brookes, Esq.,  
Col. W. F. Rendell, represent-  
ing the Militia Department.  
Donald Mitchell, Esq., Great War  
Veterans' Association,  
Officer Matthews, R.N.R.

Furtherance of the object aimed  
meeting will be held in the Board  
Trade Rooms, on Saturday next,  
instant, at 4 p.m., for the pur-  
of appointing a Secretary and  
other necessary arrange-  
feb21,21

**Furniture For Sale.**  
Parlor Suite (hair cloth)  
Dressing Case (bevel plate  
mirror)  
Sideboard, Mirrors,  
Chairs, W. E. Bedstead, Spring  
and Mattress.  
Chest of Drawers, etc.; also  
Mahogany Sideboard,  
Small Table Piano (maker,  
Stoddart, New York).  
French Organ — Has  
changing keyboard, double  
set feeds, 3 stops.  
Clarionette, boxwood, Eng-  
lish make.  
N. W. CHOWN

**The Hidden Scourge.**  
dealing with the report of the  
Commission of the Venereal  
Diseases, by Mary Charles  
M.D., with foreword by  
Rt. Rev. the Lord Bishop of  
London. In this foreword the  
Bishop says: "I would com-  
mend the careful reading of this  
book to the British public, and  
urge them to give due weight to  
the warnings it contains."  
Price 35c.; postage paid 37c.  
**S. E. GARLAND,**  
Leading Bookseller,  
177-9 WATER STREET.