

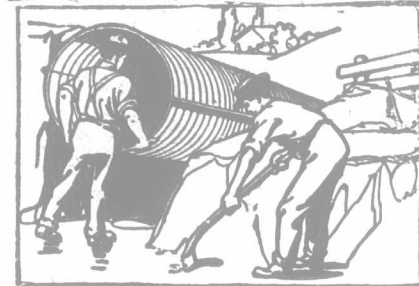
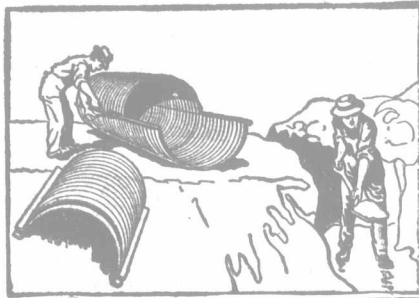


A Sample of our Culvert and a Special Book about it to any Farmer or Reeve or Municipal Officer —

**FREE**

**CULVERT**

To make better roads, reduce taxes and cut down statute labor, use Pedlar's Nestable Culvert. In strong, corrugated, non-rusting metal, you build any length needed at the job, excavate just enough to fit it in place, and tamp back the earth. Your culvert is made for years to come. Won't cave in, frost-proof, better than brick, cement or wood. Handy, quick and sure. So good you'll always use it. Holds up traction engines easily. Learn everything about it in our free book. Write for sample free.



The above two pictures tell the whole story of installing a frost-proof, time-proof Pedlar Nestable Culvert.

**PEDLAR**

SEND NOW

and get a free sample of Pedlar Corrugated Culvert by return mail. The non-corroding galvanized Toncan metal, and the strength of the sample, will tell you the whole story. Send to our nearest office below. Good culverts make good roads.

- REGINA
- WINNIPEG
- VICTORIA
- 75 Lombard St. 434 Kingston St.
- CALGARY
- Room 7, Crown Block
- ST. JOHN, N.B.
- 42-46 Prince William St.
- PORT ARTHUR
- 45 Cumberland St.
- MONTREAL
- 321-3 Craig St.
- LONDON
- 86 King St.
- TORONTO
- 111-113 Bay St.
- HALIFAX
- 16 Prince St.

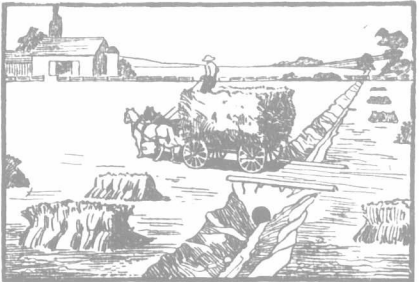
TONCAN METAL

8 ins. to 7 ft. sizes

Look at the pictures on the right. A man sets up Pedlar Culvert, ready to roll into place. Two men place it. This saves time and money. See what a fine bridge it makes at your gate, or see it make a perfect culvert on your farm. This is the best and strongest culvert ever made. Send for sample.



See What a Nice Entrance It Makes!



Best Culvert for the Fields!



Established 1861

- OTTAWA
- 423 Sussex St.
- QUEBEC
- 127 Rue du Pont
- EDMONTON
- 563 Third St. W.
- CHATHAM
- 200 King St. W.
- VANCOUVER
- 108 Alexander St.

WHEN WRITING ASK FOR CULVERT BOOK NO. 250

Direct your enquiry to the Pedlar Place nearest you. They will answer you promptly and save you time

**GRAND TRUNK RAILWAY SYSTEM**

**Canada's Double Track Line**

**HOMESEEKERS' EXCURSIONS**

—TO—

**WESTERN CANADA**

Via Chicago and St. Paul

May 15th and 28th; June 11th and 25th, and every second Tuesday thereafter until September 17th

Winnipeg and return \$34.00  
Edmonton and return 42.00

Tickets will also be on sale on certain dates via St. Paul and Northern Navigation Company.

Through Pullman Tourist Sleepers will be provided in connection with above excursions leaving Toronto 10.30 p.m.

NO CHANGE OF CARS

For particulars and tickets from any Grand Trunk Station, or write A. E. Duff, District Passenger Agent, Toronto, Ont.

**THE CANADIAN**

Our numerous customers exclaim that the CANADIAN Gasoline Engine IS THE LEADER

because it is the most reliable, simple, durable and economical engine on the market.

Why not benefit by the experience of those who are using the CANADIAN Engine. Made by

**The Canadian-American Gas & Gasoline Engine Co., Ltd.**

Dunnville, Ontario

**FROST & WOOD CO., LTD.,** Smith's Falls, Ont.

Exclusive selling agents for Eastern Ontario, Quebec and Maritime Provinces.

**A FARMER'S POWER HOUSE ON WHEELS**

Complete with Line Shaft, Truck, Pump Jack and Interchangeable Pulleys capable of 60 changes of speed.

The engine that carries its own line shaft, pulleys, belt multiplier and hangers. The Gilson Hopper Cooled Engine is a complete power plant on wheels. You can haul it anywhere, anytime, and get just the speed you need—the only kind made. Gilson's 60 cent service covers the whole farm, and the quality—alls the way—has sixty speeds, 1000 R.P.M. also 3 H.P. Engines up to 10 H.P.

WRITE TODAY. Write for sample for illustration and literature with full information. Also wanted.

**GILSON MFG. CO., Ltd.** 61 York Street, Guelph, Ont. "60 SPEED" ENGINE

For Spraying

Fruit Trees, Shrubs, Bushes and Plants, there's nothing to equal

**EUREKA**  
COMPRESSED AIR FOUNTAIN SPRAYER

Requires but one pumping to empty entire contents of tank. Automatic lever valve stops flow of liquid while going from one plant to another. Easy, light, compact, tested to stand 5 times the pressure required to expel liquid. Two nozzles, with hose attachment for spraying small trees. Write for catalogue. THE EUREKA PLANTER CO. Limited, Woodstock, Ont.

SYNOPSIS OF CANADIAN NORTHWEST LAND REGULATIONS.

ANY PERSON who is the sole head of a family, or any male over 18 years old, may homestead a quarter section of available Dominion land in Manitoba, Saskatchewan or Alberta. The applicant must appear in person at the Dominion Lands Agency or Sub-agency of the district. Entry by proxy may be made at any agency, on certain conditions, by father, mother, son, daughter, brother or sister of intending homesteader.

Duties—Six months' residence upon and cultivation of the land in each of three years. A homesteader may live within nine miles of his homestead on a farm of at least 80 acres solely owned and occupied by him or by his father, mother, son, daughter, brother or sister.

In certain districts a homesteader in good standing may pre-empt a quarter-section alongside his homestead. Price, \$3.00 per acre.

Duties—Must reside upon the homestead or pre-emption six months in each of six years from date of homestead entry (including the time required to earn homestead patent) and cultivate fifty acres extra.

A homesteader who has exhausted his homestead right and cannot obtain a pre-emption may enter for a purchased homestead in certain districts. Price, \$3.00 per acre. Duties.—Must reside six months in each of three years, cultivate fifty acres and erect a house, worth \$300.00.

W. W. CORY,  
Deputy of the Minister of the Interior.

N.B.—Unauthorized publication of this advertisement will not be paid for.

**"Go North Young Man!"**

WHY?

Because there are millions of acres of agricultural land in Northern Ontario in some cases free, and in others at 50 cents per acre, excelling in richness any other part of Canada, blessing and waiting to bless the strong, willing settler, especially the man of some capital.

For information as to terms, homestead regulations, special railway rates, etc., write to

**H. A. Macdonnell**  
Director of Colonization  
TORONTO, ONTARIO

HON. JAS. S. DUFF,  
Minister of Agriculture

**FARMS**

FOR SALE

Choice stock, grain and fruit farms for sale. We specialize in high-class properties, and aim at offering good value only. We have a special department devoted to listing and selling Ontario farms. Write for list.

**UNION TRUST CO., LTD.**  
Real-estate Department,  
201 Temple Building, Toronto.

**BUILD CONCRETE SILOS**

Any size with the London Adjustable Silo Curbs. Send for Catalogue. We manufacture a complete line of Concrete Machinery. Tell us your requirements.

**LONDON Concrete Machinery Co., Limited.**  
Dept. B, London, Ont.  
Largest manufacturers of Concrete Machinery in Canada. I

**INVENTIONS** Thoroughly protected in all countries. **EGERTON** R. CASE, Registered Patent Attorney, DEPT. B, TEMPLE BUILDING, TORONTO. Booklet on Patents and Drawing Sheet on request.