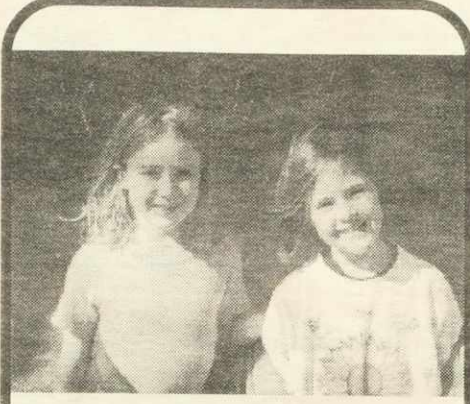
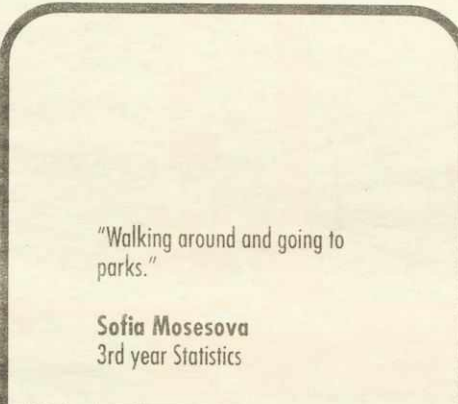


# What are your rites of springtime?



"Catching frog eggs!"

**Hannah and Elizabeth**  
Halifax  
Grade two



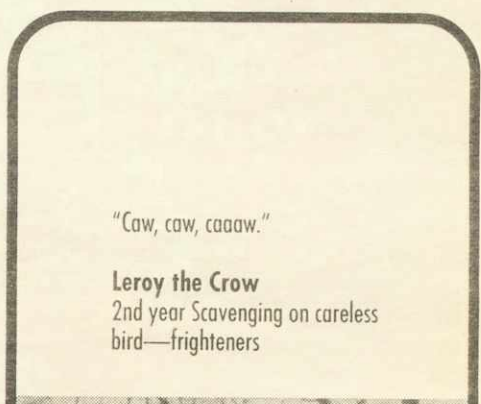
"Walking around and going to parks."

**Sofia Mosesova**  
3rd year Statistics



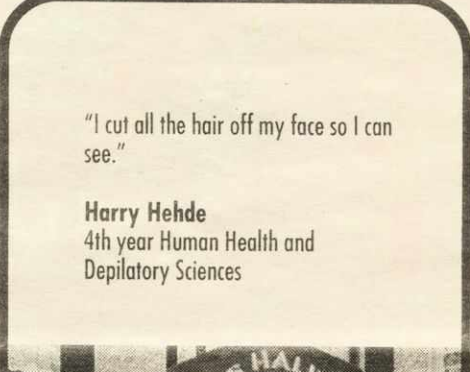
"Climbing trees and frightening returning birds."

**Ben Sichel**  
2nd year History



"Caw, caw, caaw."

**Leroy the Crow**  
2nd year Scavenging on careless bird—frighteners



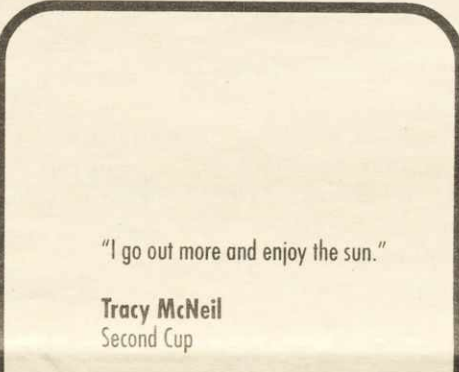
"I cut all the hair off my face so I can see."

**Harry Hehde**  
4th year Human Health and Depilatory Sciences



"Sitting on my porch playing guitar."

**Paramita Adhikari**  
2nd year Math and Psychology



"I go out more and enjoy the sun."

**Tracy McNeil**  
Second Cup



"Frisbee"

**Robert Croney**  
Toronto  
Many years in History



PARK  
LANE

PARK LANE SHOPPING CENTRE

PARK  
LANE

[www.famousplayersmovies.com](http://www.famousplayersmovies.com)

**FAMOUS PLAYERS**  
Big Screen Big Sound Big Difference

Listings for Feb. 17 - 23 only. Park Lane movie line 423-4598  
Matinees, & Mon. - Thurs. evenings \$5.75, weekend evenings \$9.00

**What Planet Are You From?** AA  
Fri. at 6:50-9:20 Sat.-Thurs. at 1:15-3:30, 6:50-9:20

**Drowning Mona** AA  
Fri. at 7:30-9:30 Sat. - Thurs. at 1:50-4:15, 7:30-9:30

**Wonder Boys**  
Fri. at 6:45-9:15 Sat. - Tues. at 1:40-4:20, 6:45-9:15  
Wed at 1:40-4:20-9:15

**The Ninth Gate**  
Fri. at 7:00-9:50 Sat. - Thurs. at 1:00-3:45, 7:00-9:50

**The Next Best Thing**  
Fri. at 7:20-9:45 Sat. - Thurs. at 2:00-4:30, 7:20-9:45

**The Tigger Movie**  
Fri. at 6:05 ONLY Sat. - Thurs. at 12:30-2:15, 4:10-6:05

**The Whole Nine Yards**  
Nightly at 7:45-10:00 ONLY

**American Beauty**  
Fri. at 6:40-9:10 Sat. - Thurs. at 12:45-3:20, 6:40-9:10

**Mission to Mars**  
Fri. at 7:10-9:40 Sat. - Thurs. at 1:30-4:00, 7:10-9:40  
**Mon-Thu All Day \$5.75, Evenings \$9.00**

## THE SHOPS AT PARK LANE

**Coming Soon...**

**to Park Lane Shopping Centre**

- \* **Samuel & Co.** - fine ladies fashions
- \* **Just Springroll** - Viet/Thai Cuisine
- \* **Mary's Corner** - Seafood & Lebanese Cuisine

5657 Spring Garden Rd. 420-0660

CHECK IT OUT!

5657 SPRING GARDEN ROAD • 420-0660