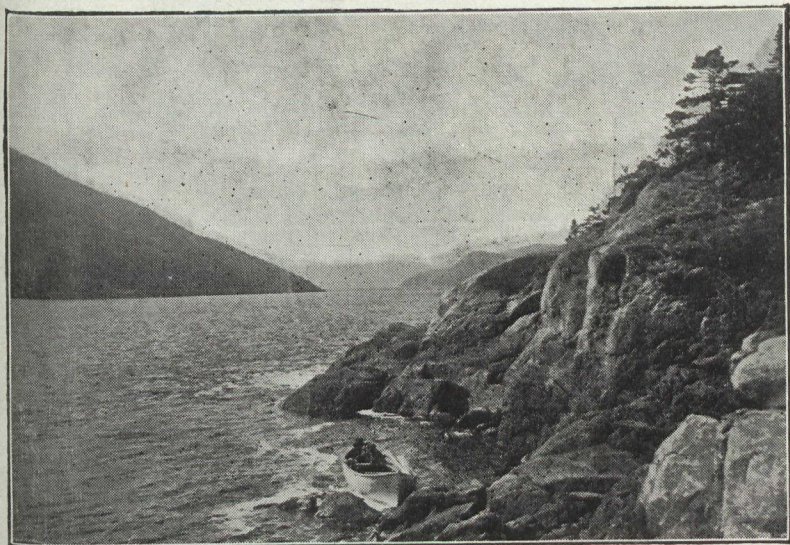


## An Attractive Summer Outing to the Far Famed Saguenay River



A Suggestion for your summer vacation

Including 1000 Islands, "Shooting the Rapids,"  
and the historical cities of Montreal and Quebec  
reached *via* the

### Richelieu & Ontario Navigation Co.

For folders, rates and further particulars  
call on railway or steamship agents or write

THOS. HENRY  
Traffic Manager, Montreal, P.Q.

H. FOSTER CHAFFEE  
A.G.P.A., Toronto, Ont.

## CANADIAN CAR & FOUNDRY COMPANY LIMITED

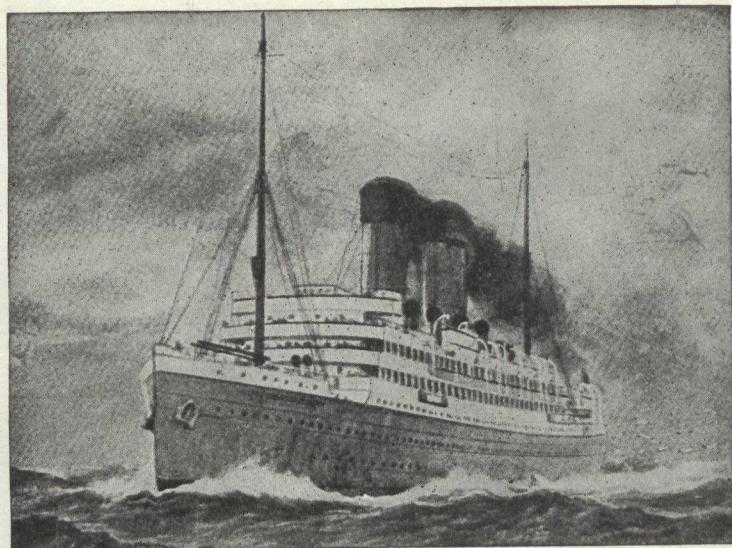
BUILDERS AND DESIGNERS OF  
ALL KINDS AND TYPES OF

Freight and Passenger  
Cars of Steel or Wood  
Construction, Car Wheels,  
Castings, Brake Beams,  
Bar Iron, Forgings, Bolsters.



WORKS AT  
AMHERST, N.S., and MONTREAL, QUEBEC

HEAD OFFICE :  
EASTERN TOWNSHIPS BANK BUILDING  
MONTREAL, QUEBEC



## SIX DAYS TO LONDON

Three days, sixteen hours and five minutes from land to land. It is the Royal Line to Bristol that makes this possible; and it is the Royal Edward which holds this Canadian trans-Atlantic record. But there are other considerations besides speed which should induce you to travel by the

### ROYAL EDWARD or ROYAL GEORGE

Not only are these twin ships the fastest triple screw turbine boats on the Montreal to London route, but their equipment is the finest on the Canadian Service. They are driven by the newest type of turbine engines, ensuring uttermost speed with least vibration. Large state-rooms, spacious social apartments, sheltered promenade decks, tasteful and artistic furnishings, splendid service, and ventilation by the thermo-tank system indicate the unusually high character of the appointments, comforts and conveniences of these boats.

For full particulars, rates, sailings, see nearest Steamship Agent, or write

H. C. BOURLIER,	General Agent,	Canadian Northern Steamships, Limited,	Toronto,	Ont.
GUY TOMBS,	"	"	"	Montreal, Que.
A. H. DAVIS,	"	"	"	Winnipeg, Man.
P. MOONEY,	"	"	"	Halifax, N.S.

## A NEW TRAIN Toronto to Sault Ste. Marie

Lv. TORONTO 9.00 p.m. Ar. SOO 1.10 p.m. noon.

DAILY

Through Coaches and Sleepers

The fastest time by several hours, and the only through train  
from Toronto.



R. L. THOMPSON,  
District Passenger Agent, Toronto



## Most Direct Route TO THE "Highlands of Ontario"

Orillia and Couchiching, Muskoka Lakes  
Lake of Bays, Maganetawan River, Algonquin National Park  
Temagami, Georgian Bay, Kawartha Lakes

### Spend Your Summer Holidays at One of These Delightful Spots

Finest summer playgrounds in America. Good hotel accommodations at moderate cost. The lover of outdoors will find here in abundance all things which make roughing it desirable. Select the locality that will afford you the greatest amount of enjoyment, and send for free map folders, beautifully illustrated, describing these out of the ordinary resorts.

All this recreation paradise only one night away from the leading cities of the United States, via the Grand Trunk. Palatial trains provide every travel luxury to your destination. Address—

A. E. DUFF,	District Passenger Agent,	Toronto, Ont.	J. QUINLAN,	District
Passenger Agent,	Montreal, Que.	H. G. ELLIOTT,	General Passenger Agent,	Montreal.
G. T. BELL,	Assistant Passenger Traffic Manager,	Montreal.	W. E. DAVIS,	Passenger Traffic Manager,
				Montreal.