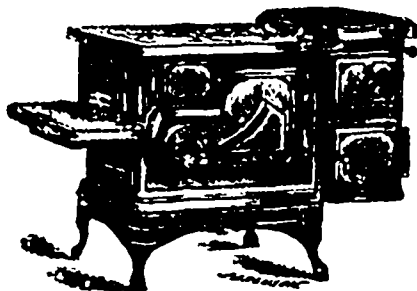


# DON'T BE TOO ANXIOUS TO PLACE YOUR ORDERS FOR STOVES, RANGES,

— AND —  
**HOLLOWARE,**



Until you have seen our  
Cuts and Prices.

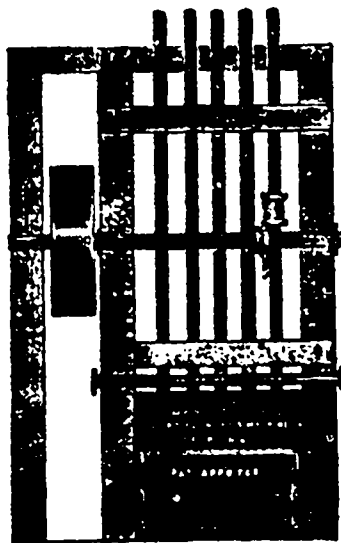
OUR SPECIALTY:  
**First-Class Goods**  
AT THE LOWEST POSSIBLE PRICES.

## WINDSOR FOUNDRY CO.

WINDSOR, NOVA SCOTIA.

## Truro Foundry and Machine Co.

**TRURO, N.S.,**  
ENGINEERS AND FOUNDERS.



Our SPECIALTIES are—

### GOLD MINING MACHINERY

Of every kind, with latest Western Improvements.

### ROTARY SAW MILLS,

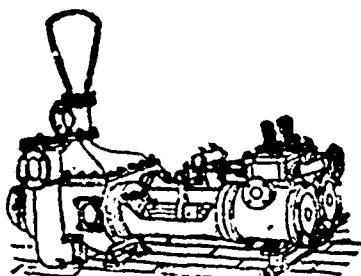
In Latest Styles, and

### HOT WATER BOILERS.

Estimates furnished for Heating Dwellings,  
Stores, Churches, &c., with Hot  
Water or Steam.

ALSO—

Manufacturers of Boilers and  
Engines, Iron Bridges, Stoves,  
Ship, Mill and General Castings.



## IMPORTANT

Gold Miners and other Users of  
Machinery and Supplies.

## Austen Brothers,

HALIFAX, N. S.

Are prepared to furnish Estimates for every description of MACHINERY & SUPPLIES

## AT MANUFACTURERS' PRICES!

Engines, Boilers, Stamp Mills, Rotary Saw Mills, Pumps, Heaters, Injectors, Wrought  
Iron Pipe and Fittings, Boiler Tubes, Copper Plates, Silvered or Plain; Beltings, Pack-  
ing, Hose, Waste, Shovels, Picks, Wire Ropes, Dynamite, Powder, Fuse, Emery  
Wheels, Steel, Water Wheels, and Supplies of every description.

**OILS.** In calling attention to our

## LUBRICATING OILS,

We beg to say that we carry the largest and best assorted Stock in the Provinces; and  
if parties requiring Lubricants will inform us of the kind of work it is to do, we will  
send an Oil, and GUARANTEE it satisfactory or no sale.

Remember, we have no fancy profits.

Our Motto—Quick Sales ON COMMISSION.

## MINING.

**ANALYTICAL DEPARTMENT.**—To meet a long felt want THE CRITIC has made arrangements with a competent Analyst, who will determine the quality of all specimens sent to be tested. The fee charged will be from two to eight dollars, according to the difficulty and expenses incurred by the analyst in making the analysis. The strictest secrecy will be observed, and the result of the analysis will only be known to the operator and the sender of the sample. Send samples by parcel-post or otherwise, with a fee of two dollars. "Analyst," care A. M. Fraser, Business Manager of THE CRITIC. Should a larger fee be required, the sender will be notified.

**THE MINING OUTLOOK.**—There is very little new to report in regard to the gold mines of the Province. All the old properties are being worked to their utmost capacity, but now finds of value are rarely heard of. Coal mining is in a flourishing condition, and the Spring Hill Mines have just closed a large contract with the Grand Trunk Railroad. Nothing new has been received in regard to the opening up of the iron deposits under the stimulus of the new tariff; but the air is full of rumors of proposed work. We should like to see active operations commenced, as the summer season is now half over; and if something is not soon done, another year will have to elapse before smelting works can be built. In New Brunswick, the mining outlook is most promising, and new discoveries of valuable minerals are reported from several sections of the Province. The wild speculative period of mining has been passed over, and, under wise and competent management, assisted by greatly improved mining machinery, profitable returns are the rule, and we hear of no failures.

**A WONDERFUL DEPOSIT.**—Albert County, New Brunswick, is one of the richest mining sections in the Maritime Provinces, and will yet take a front rank among the mineral producing belts on the Atlantic coast. Now that ship building and lumbering no longer make adequate returns for the capital expended, the people are turning their attention to the development of the rich mineral resources which nature has so lavished upon them. Among the most recent is that of a deposit of pulverized manganese, which is estimated to contain at least five hundred thousand tons. The deposit is located in what has hitherto been regarded as a bog, and has evidently been washed from the adjoining hill; the manganese is mixed with decayed vegetable matter, which, it is thought, can be driven off by fire, without injury to the mineral. Several tests have been made, which prove that the deposit contains from forty-one to forty-three per cent. of pure manganese, and if this proves correct, the owners of the property, most of whom live in Hillsboro, N. B., must realize a handsome sum from their property. The cost of mining this deposit cannot be great, in fact a pick will seldom require to be used, as the material, which lies loosely on the bed rock, can easily be shovelled into carts and carried away. Tests have been made as to the depth of the deposit, which shows it to vary from twelve to eighteen feet, and, according to a calculation made by a competent authority, there cannot be less than a half a million tons on the property. The owners are not yet certain whether the manganese will have to be separated by the application of acids, or whether it can be secured by destroying the vegetable matter with which it is supposed to be associated. In either case the profits will be large, but if the second method can be employed, the property will prove a veritable bonanza.

Additional returns for June, received at the Mines Office up to date.

District.	Mill.	Tons Crushed.	Value.
Oldham.....	Oldham G. M. Co.....	2361	21
Moose River, Cariboo .....	Moose River G. M. Co. ....	98	81

The Hall-Owen property at Whiteburn has been sold for \$25,000, in thousand cash.

**MILLISGATE LAKE DISTRICT.**—Work is to be again commenced on the Owen properties in this district. A good mill was erected some two years ago, but was shut down soon after. We are happy to report that operations are now to be actively pushed. Mr. Burg, the President of the Dalmen Gold Mining Company, is now in charge of the works at Millisgate.

The manganese property of Messrs. Archibald, Stevens and Carter, at Onslow Mountain, is now being operated by a Montreal Company, and is proving to be even more valuable than its owners represented.

W. J. Nelson was in town last week, en route for Boston, where he has received a large offer for the right to sell Minard's Liniment in the United States. He was besieged at the "Halifax," where he was stopping, by a number of mining men, all anxious to purchase or lease some of the gold properties he owns in Whiteburn and other districts in Queens and Lunenburg Counties. Mr. McGuire, of Whiteburn, was also in town, disposing of his monthly gold brick.

**CHARACTER OF QUICKSILVER DEPOSITS.**—Prof. S. B. Cristie, of the University of California, whose admirable paper on the New Almaden quicksilver works appeared some time ago in this journal, in his testimony in a recent case in San Francisco, says:—"Quicksilver deposits, as a general rule, are very different from those of the ores of other metals. Many of the metals occur in well-defined fissure-veins, so that there is no difficulty in following the ore, and in many cases of calculating beforehand the amount of ore in sight; but with the exception of the deposit at the Old Almaden in Spain, and to some extent, the deposit at the Idria in Austria, the quicksilver deposits, particularly those of California, are characterized by a persistent irregularity, so that it makes the mining of these ores more difficult than that of other metals. New Almaden is a striking example of this."—