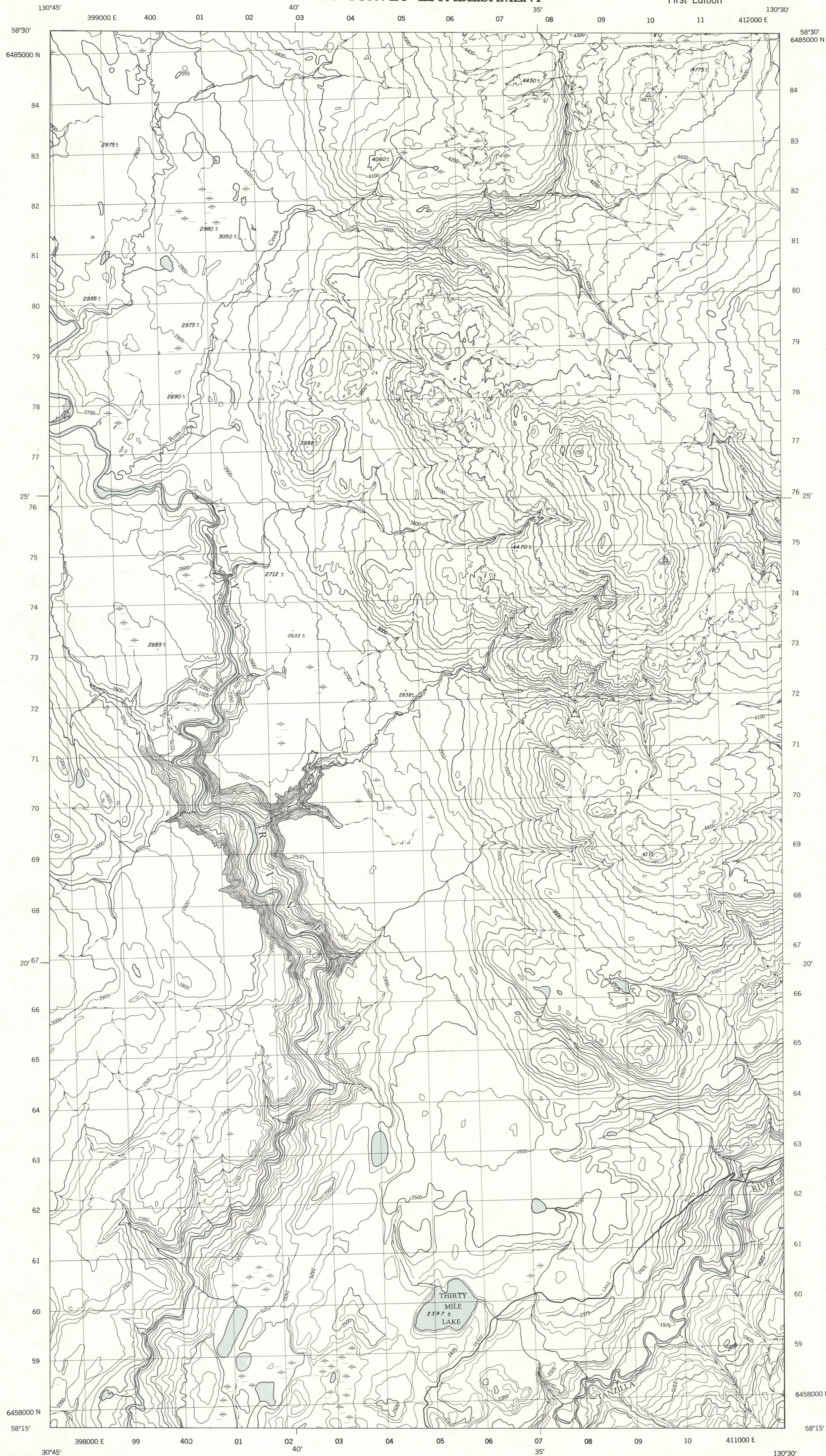


DEPARTMENT OF NATIONAL DEFENCE
ARMY SURVEY ESTABLISHMENT

First Edition

104J/7 EAST



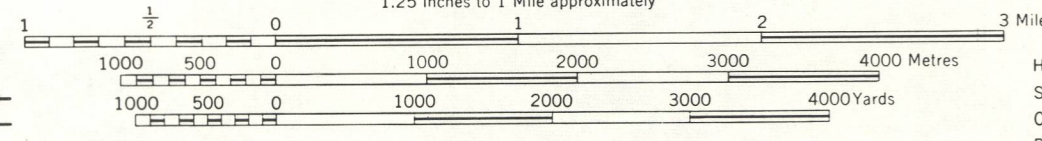
Produced by the Army Survey Establishment, R.C.E. 1959
Names appearing on this sheet have not been considered by the Canadian Board on Geographical Names.

Users noting errors or omissions on this map are requested to mark hereon and forward to Commanding Officer, Army Survey Establishment, Ottawa. Maps will be replaced if desired. Copies may be obtained from the Map Distribution Office, Dept. of Mines and Technical Surveys, Ottawa, at 25 cents each.

LITTLE TUYA RIVER

BRITISH COLUMBIA

SCALE 1:50,000
1.25 inches to 1 Mile approximately



CONTOUR INTERVAL 100 FT.
Auxiliary 25 and 50 Ft.

UNIVERSAL TRANSVERSE MERCATOR GRID
ZONE 9

PROVISIONAL MAP
Subject to Correction

REFERENCE

- | | |
|--|--|
| <ul style="list-style-type: none"> Boundaries: international, with monument provincial county or district township or parish township or parish, unsurveyed city or town park, reserve, etc. Horizontal control point, with elevation Bench mark, with elevation Spot elevation, precise, approximate Historical monument, Cemetery Mine or open cut, Quarry Sand or gravel pit | <ul style="list-style-type: none"> 582 BM 1015 4582 737.2 |
|--|--|
- Roads:
- hard surface, all weather
 - dry weather
 - cart track, trail
 - Railways: normal gauge, multiple track
 - normal gauge, single track
 - abandoned or under construction
 - underpass, overpass
 - Tunnel, Drawbridge
 - Power line; Telephone line

REFERENCE

- | | | |
|--|--|--|
| <ul style="list-style-type: none"> House; Building School Church; Church with spire Post Office Radio Station Tower; Chimney Well; Tank Cutting Embankment Cut Contours: elevation depression approximate | <ul style="list-style-type: none"> 200 250 300 350 400 450 500 550 600 650 700 750 800 850 900 950 1000 | <ul style="list-style-type: none"> Foreshore flats Lighthouse Wharf or pier; Breakwater Levee or dyke Rocks or reef Swamp or marsh Inundated land, seasonal Intermittent lake, stream Indefinite shoreline, stream Rapids, large, small; Bridge Ditch or flume Snowfield; Glacier Wooded area; unclassified, scrub Vineyard; Orchard |
|--|--|--|

SUPERSEDED EDITION

McGILL UNIVERSITY
MAP COLLECTION
GEOGRAPHY DEPARTMENT
MONTREAL