

MOTORS And Their Care



Beware of the Loose Fan.
Watch the fan and inspect it often for defective riveting at the hub. A loose fan blade may do a lot of damage to the radiator should it break.

To Silence Metallic Noises.
Ordinary cotton braid, such as every woman's sewing kit contains, makes an effective silencer wherever sheet metal comes in contact with sheet metal.

Never Slam Doors.
Slamming of doors on a car is a practice which should be avoided at all times. Persistent slamming racks the hinges and loosens the doors until they become wobbly and hang loosely.

Replenishing Boiling Radiator.
Never pour cold water into a hot, empty radiator without having the engine running. Fill the cooling system by pouring in a gallon of water and waiting several minutes before adding any more. Cold water coming in contact with hot cylinders will crack them.

Replacement of Valves.
When removing valves from an engine for any purpose, it is of the utmost importance to keep them separate and replace them in the identical seats from which they were removed. Failure to do so will be certain to result in leakage and may cause the clearance be-

tween the tappets and stem ends to be wrong.

Attention May Prevent Accident.
Be sure to inspect the wheel bolts, tire lugs and hub caps occasionally. When a wheel comes off the brakes are useless and the car travels on momentum, usually turning toward the side of the missing wheel.

Keep the Motor Clean.
Dirt and water are the worst enemies of the mechanical units of a car, and the more intricate the machine the greater is the damage. When dirt or dust gets into the gears and other parts, mixed with lubricating oil, it makes a dangerous grinding material. Worn bearings, loose parts, lost motion, knocks and breakdowns are the result.

Care of Paint.
To retain the lustre of a car never wash the varnished surface with water warmer than 6 degrees. Cleaning solutions should be avoided, especially if they contain ammonia or any kind of lye soap. No matter how much mud or dirt is on the car, it should not be scrubbed off with a brush. The integrity of the varnish is impaired by every scratch it receives.

Sawdust for Filtering.
To separate dirt, metal and dust from used oil, a filter can be made by fastening a piece of muslin or cotton cloth to a metal or wooden ring large enough to fit over the top of a can or other vessel. The cloth should be left a little slack, and in the shallow bag so formed a quantity of sawdust is placed. The oil to be filtered is poured Run slowly through traffic.

through and leaves its foreign matter behind in the sawdust.

When the shoulder on the wheel, designed to hold the demountable rim, be-

"Wear-Ever"

Aluminum Utensils

are made from thick, hard sheet aluminum.
Light, beautiful and durable.

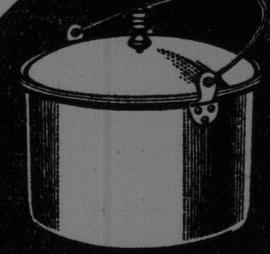
Northern Aluminum Co. Ltd.,
Toronto

Windsor
Kettle.



Replace utensils that
wear out with
utensils that
"Wear-
Ever"

Straight
Kettle



comes worn, the tire and rim will creep on the wheel.

A click in the coil usually denotes a leak in the condenser.

This is the best time of the year to have an automobile overhauled.

A wobbling wheel may be caused by bearing wear or by a bent shaft.

The average passenger automobile runs 15 miles on a gallon of gasoline.

A good top dressing, applied at least once a year, will keep the top in good

condition, as well as improve the appearance.

The major items of the operating expenses of an automobile are gasoline, oil and tires.

A gripping clutch has a tendency to spin the rear wheels and wear the tread on the tires.

When signalling your intention to the driver behind, make each motion so it can be clearly understood.

To drive a car with oversized tires does not require any more power than cars equipped with regular-sized tires.

Loose crank and camshaft bearings will increase the distance between timing gears, thus allowing these to mesh unevenly.

Episcopalians Hail Spirit of Youth Entering Religion

Young People Turning More to Church For Answers to Modern Problems, Says Dr. Gardner.

(New York Tribune.)
Young men and young women to the number of 250,000 are joining or organizing clubs and societies within the Episcopal Church, drawn there by problems raised by the new ideals of equality between the sexes and the desire for a high standard of reaction and pleasure, according to the Rev. Dr. William E. Gardner, head of the religious education department of the Episcopal Church, who preached re-

cently at the Cathedral of St. John the Divine.

Dr. Gardner's subject was "Are Boys and Girls Between Sixteen and Twenty-five Interested in Religion?" and he answered it by the membership figures of more than 250,000 of the Young People's Service League and the Young People's Fellowship organized in the Episcopal churches.

"These boys and girls see the married women in the office, they read the events of the divorce court, they see the growing power of women in the state and in a subtle way they feel that the whole problem of the equality of the sexes is their problem and the sooner they begin to live the problem, the better. Naturally they look around for conditions where they can meet and talk and play and work together. The church offers one of these conditions, but it does more; it offers ideals of right relationship between humans, regardless of sex. In fact, the ideals of the church are her greatest assets in directing youth."

"The second reason for the turning

of youth toward the church is the desire for a high standard of recreation and pleasure. The youth movement in the church intends to restore some of the joy and cheerfulness that have been taken out of Christianity. To be good and not know it to some Christians would not be goodness.

"Youth is making us face the question, could we not play better if we had more ability to play? Could we not have more joy in our religious life if we had been trained to have less self-consciousness?"

SAY 75 P. C. OF PUPILS
HAVE SPINAL DEFECTS

Osteopaths at the opening in New York this week of the first free clinic for children in the spinal ills prevention week crusade declared that three-fourths of the children in public schools have spinal defects, and that these are practically all preventable if taken in time. The responsibility for failure to prevent these ills was placed on the parents.

Ford
47%
bought Ford
16%
bought all other
37%
makes of
Cars
**The Value
of Good
Judgment—**

You are considering the purchase of a car. You are not quite sure of your judgment. You desire to know what the judgment of other car buyers has been. It has been the well-ordered and considered judgment of forty-seven car buyers out of every hundred who have bought cars to buy a Ford car.

Of the remaining fifty-three, the highest number who purchased any one make of car was sixteen. Forty-seven people will average among them better judgment than sixteen.

And it was the well-ordered and considered judgment of these people to buy Ford cars. These people were scattered from Halifax to Vancouver—with the average transportation needs to solve for themselves and their goods. They bought Ford cars.

Their judgment was based on—
Lowest Upkeep Cost.
Lowest Prices for repair parts.
Ability to obtain parts readily and anywhere.
Ability to obtain service at any one of 3,000 Service Stations—in a straight line from Halifax to Vancouver these Service Stations would be only one mile apart.

The knowledge that the price of car, the repair parts and service labor is standardized to the lowest possible point.

The well-ordered and considered judgment of forty-seven purchasers out of every hundred purchasers of cars to buy a Ford car should be the determining factor on your part to buy a Ford car.

The Price of the Touring Car is \$445.
Freight and Government Taxes extra.
And it can be bought on a monthly payment plan.

ROYDEN FOLEY, St. John, N. B.

FORD MOTOR COMPANY OF CANADA, LIMITED, FORD, ONTARIO 723

**They
Cushion
the
bumps**

THE better your car the more resilient the springs are sure to be; the more resilient they are, the more surely will violent spring action toss you from your seat.

Side sway, teetering, vibration and side roll going around curves—these discomforts are constantly experienced on city streets, as well as country roads—more so than you realize.

They lead to costly repairs which Hasslers' will prevent.

By absorbing shocks and holding the car to the road, Hasslers' make your car roll smoothly over bumps, and dissipate the jars, jolts and vibration from car tracks, bad pavements, and suburban rough roads.

On tires alone, on repairs alone, on re-sale value alone—Hasslers' save their cost. You are paying for them anyway. Why not enjoy them! Your dealer will explain these Hasslers' facts.

HASSLER'S Shock Absorbers

Made in Canada
ROBERT H. HASSLER LIMITED, HAMILTON, ONTARIO

Phillips & Pringle, Limited
Fredericton, N.B.

FOR FORD CARS—
Hassler Prices,
Installed:
Single type - \$25
Twin type - \$35
West of Ft. William add
\$1 to the above prices.

DUNLOP TIRES

None Better—None as Good

Some Features

Quality—as high as it
is uniform.

Service—known for its
all-the-year-round
reliability.

Prices—so low even the
buyer is surprised.

Why Chevrolet is the Fastest Selling Standard Car Made

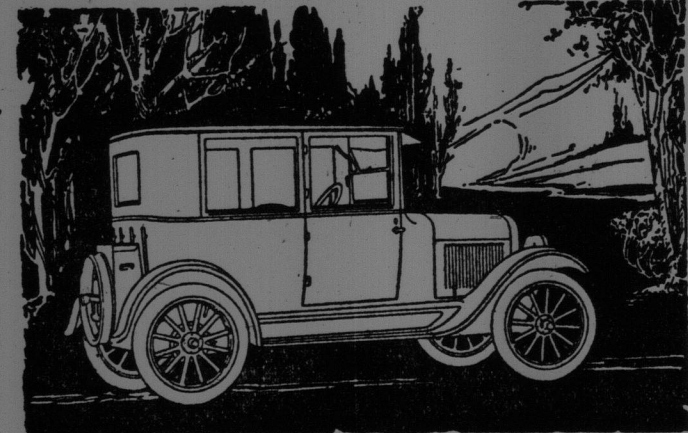
Look at any Chevrolet model and you will understand immediately why Chevrolet is the fastest selling standard car built.

It represents the most sensational value in modern economical transportation ever established.

Chevrolet offers the most striking evidence that it is now no longer necessary to pay high prices for quality transportation.

All Chevrolet models are characterized by beauty of line and finish, comfort, easy and smooth operation. Fisher bodies with their artistic appearance, riding luxury and complete interior appointments are used on all closed models.

Through engineering and marketing efficiency Chevrolet has achieved volume production of quality automobiles, thereby effecting such remarkable economies that Chevrolet now leads all standard built cars in volume of sales.



5-passenger Touring Coupe \$1115 f.o.b. Oshawa.

follows: 2-passenger Roadster \$695; 5-passenger Touring \$710; 2-passenger Utility Coupe \$910; 5-passenger Touring Coupe \$1115; 5-passenger Sedan \$1125.

All prices f.o.b. Oshawa. Government taxes extra. Ask about the G.M.A.C. plan of deferred payments.



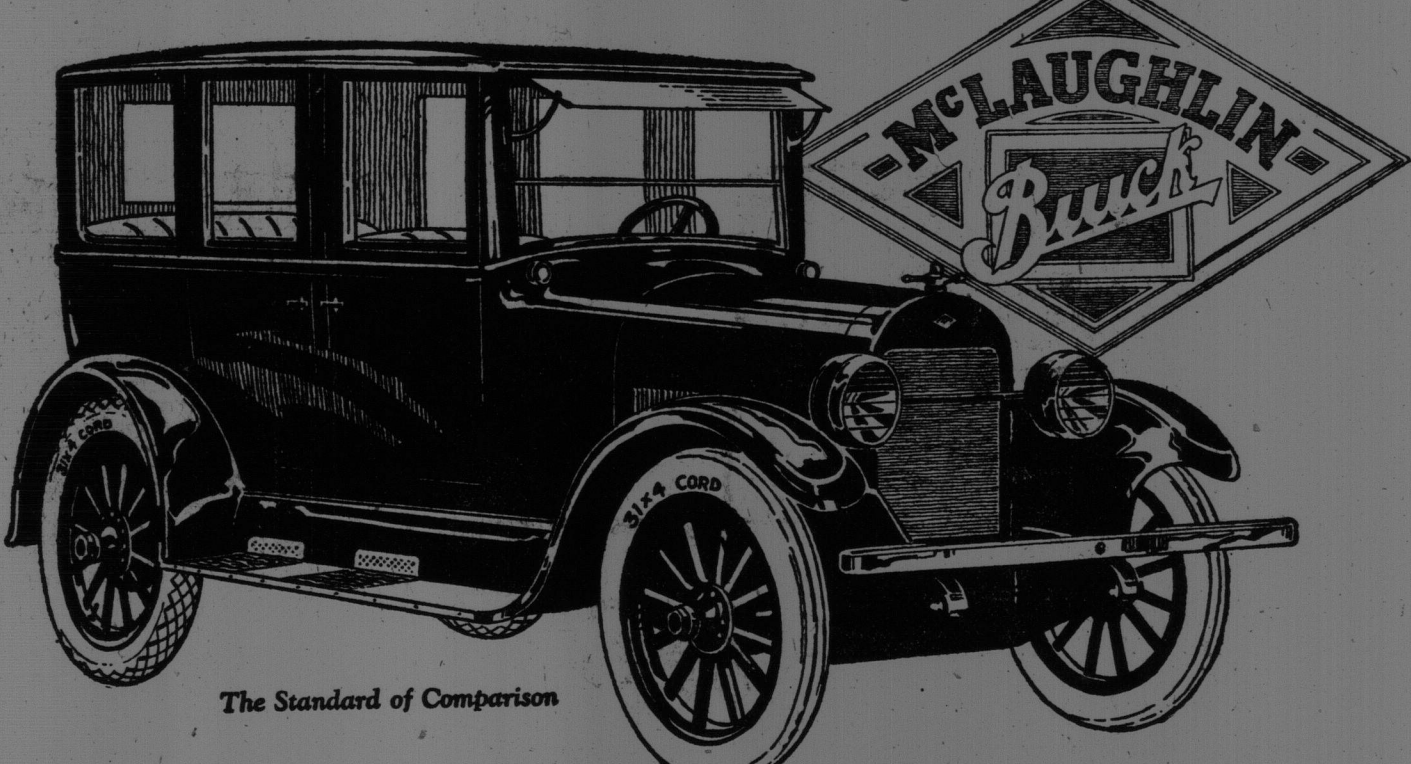
for Economical Transportation

CHEVROLET MOTOR CO.
of CANADA, LIMITED
Subsidiary of General Motors of Canada,
Limited.

OSHAWA and WINNIPEG

Dealers wanted in territories
not adequately covered.

Parlee Motor Sales Ltd., 453-463 Main Street, St. John, N. B.
J. Clarke & Son, Fredericton, N. B.; The Lounsbury Co., Limited, Newcastle, N. B.
Aiton & Adair, Sussex, N. B.



The Standard of Comparison

Year 'Round Comfort for Five Persons

The "Master Four" Sedan 23-37 \$1950

The McLaughlin-Buick "Master Four" five-passenger sedan has every convenience, comfort and refinement of the finest closed car.

The Fisher-built body is trimmed and upholstered in fine plush with hardware of a handsome pattern. Wide doors with large plate glass windows adjustable to any position, giving easy access to the roomy compartments. Silk shades, a soft dome light and fine carpeting are all of a quality found only in high priced closed cars.

Comfort for year 'round driving is assured by a heater for winter and controlled ventilation for summer by means of the cowl ventilator and adjustable windows and the windshield.

Marked refinements in the chassis and in the famous valve-in-head engine increase the riding comfort and add materially to the inherent McLaughlin-Buick qualities of dependability and performance—qualities that have made McLaughlin-Buick "Canada's Standard Car".

McLaughlin-Buick cars carry Class A insurance rating.



Convenient Gear Shift Lever

In all McLaughlin-Buick models the gear shift lever has been lengthened, bringing it up to the level where the driver's hand will rest naturally when released from the steering wheel. Changing gears can be done quickly without bending forward or groping for the lever.

PRICES F.O.B. OSHAWA, GOVERNMENT TAX EXTRA

| Master Four | Master Six |
|---------------------------------|------------------------------------|
| 23-35 Regular Touring... \$1235 | 23-41 Touring Sedan... \$2725 |
| 23-36 Special Roadster... 1275 | 23-42 Special Roadster... 1695 |
| 23-37 Special Touring... 1295 | 23-43 Special Touring... 1725 |
| 23-38 Coupe... 1645 | 23-44 Coupe 4 Passenger... 2675 |
| 23-37 Sedan 5 Passenger... 1850 | 23-45 Special 7 Pass. Tour... 2095 |
| 23-39 Touring Sedan... 1855 | 23-46 Sedan 7 Passenger... 3085 |
| | 23-47 Special Sport Roadster 2295 |
| | 23-48 Special Sport Touring 2375 |

McLAUGHLIN-BUICK MOTOR CAR CO. LIMITED

Subsidiary of General Motors of Canada, Limited, Oshawa, Ont.
Ask about our plan of deferred payments

Branch House—140-144 Union Street

12 Factory Branches from Coast to Coast—Dealers Everywhere

McLAUGHLIN-BUICK