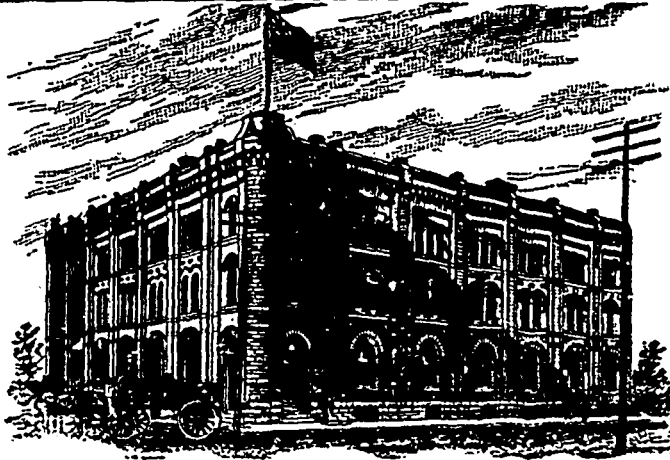


GOODS SOLD TO THE
TRADE ONLY.GOODS SOLD TO THE
TRADE ONLY.

G. F. & J. GALT,

DIRECT IMPORTERS

TEAS, SUGARS, WINES, LIQUORS and GENERAL GROCERIES
CORNER PRINCESS AND BANNATYNE STREETS, WINNIPEG, MANITOBA.

Eastern Business Changes.

ONTARIO.

Jno. E. Ward, hotel, Chatham, is dead.
P. Roach, Patterson House, Grafton, is burnt out.
Geo. Hutchings, harness, Grafton, is burnt out.
B. M. Brisbin, grocer, Essex Centre, has sold out.
J. M. Henry, jeweler, Leamington, has sold out.
Young Bros., furniture, Toronto, W. Young dead.
James Boyd, general store, Vankleek Hill, is dead.
J. S. Walten, sawmill, Dundalk, has assigned.
A. E. James, general store, Thamesville, has sold out.
D. Gardner & Co., dry goods, Ottawa, have assigned.
D. W. Miller, general store, Norwich, has sold out.
H. C. Walker, hotel, Fergus, is going out of business.
Huber & Nichol, tins, etc., Stratford, have dissolved.
John Simon, dry goods, Lindsay, has moved to Bradford.
Strachan & Co., general store, Rockwood, have assigned.
Thayer & Co., wholesale jewelers, Toronto, have assigned.
Cox Bros., general store, Lakefield, are retiring from business.
C. Champion, hardware, Brantford, stock sold at 50¢ in the dollar.
N. McGillivray, general store, Port Elgin, damaged by fire; insured.
Thompson Bros., hardware, Port Elgin, damaged by fire; insured.
G. Unser, carpet manufacturer, Toronto, a meeting of creditors held.
Jane McKitterick, general store, Greenwood, is offering 50¢ in the dollar.
Markham Woolen Mills, Markham, Louisa Robinson, seized by creditors.
J. S. Grant, hats and caps, Toronto, stock, etc., sold at 37¢ in the dollar.
W. J. Stephenson, dry goods and shoes, West Toronto Junction, has assigned.

Dignum, Wallace & Co., commission woolens, etc., Toronto, have dissolved; now Hutchinson, Dignum & Nesbitt.

QUEBEC.

J. J. Head, butcher, Montreal, has assigned.
H. Ricard, general store, St. Guillaume, has assigned.
Prime Houle, general store, St. Perpetue, has assigned.
Camille Lalonde, general store, St. Telephore, has assigned.
E. E. Bouchard, general store, St. Etienne de Bolton, demand of assignment.

NOVA SCOTIA.

L. C. McQuinn, general store, Gay's River, has assigned.
McNeil & Co., general store, North Sydney, have assigned.
M. E. LeBlanc, general store, Clark's Harbor, is offering compromise at 60 per cent.

Grain and Milling.

H. J. Pearson has sold his elevator at Neepawa, Man., to the new milling company, recently formed at Neepawa.

Wisconsin reports a small decrease in spring wheat acreage this year. The two Dakotas also report a decreased wheat acreage.

R. Whitelaw, of Woodstock, Ont., is having plans prepared for the new flour mill which he will erect this year at Pilot Mound, Man.

It is stated that a steam elevator with a capacity of 35,000 bushels will be built at High Bluff, Man., this summer by John Dilworth.

The plans for the new flour mill and warehouses for the Mount Royal Milling Company, to be erected at Victoria, B.C., have been prepared. The buildings will cost about \$50,000.

The total export of wheat from India from the 1st of April, 1889, to the 31st of January, 1890, is returned as 1,549,830 cwt. If to this be added a quantity representing the probable export during the two remaining months of February and March, not usually exceeding 50,000 cwt., the total exports for the financial year, would be about 1,600,000 cwt. Against this total the total exports of wheat during 1888-89 were 2,929,304 cwt., and during 1887-88 4,332,809 cwt. These figures show a reduction

WHOLESALE JEWELER.

Manufacturer and Importer of

Watches, Diamonds,

Jewelry, Clocks, Etc.

Tools, Material,

Etc., Etc.

Prices guaranteed as low as any House in Canada. Write for quotations. Call and see us when in the City.

433 and 435 MAIN STREET.

W. F. DOLL.

in the exports during the year 1889-90 of 45 per cent. on the exports of the previous year, and of 63 per cent. on those of 1887-88. This does not indicate that India will be such a great competitor with American wheat growers as has frequently been represented.

McCulloch & Herriot, owners of the flour mill at Plum Creek, Man., are having some little trouble with the C.P.R. Co. regarding shipping facilities, in consequence of which they threaten to move their mill to the Northern Pacific and Manitoba railway, Brandon branch. They want the C.P.R. to allow them to ship grain from their own elevators and mills, to which a switch is to be built. They are allowed to ship flour and mill stuffs via this switch, but must team their surplus unground grain to the station, a quarter of a mile distant and ship there.

The Minneapolis *Market Record* of April 21 says: The country elevator stock of wheat in Minnesota and in North and South Dakota to-day amounted to 4,260,000 bushels, which was a decrease of 663,000 bushels for the last week. Minneapolis public stocks are now 7,451,349 bushels a decrease of 46,030 bushels in the last week. Private elevator stocks in Minneapolis show 1,852,000 bushels now, a decrease of 103,000 bushels for the week. Duluth has in store and afloat 6,146,181 bushels, showing an increase of 175,155 bushels.

The quantity of Canadian crude oil refined during the year 1889, amounted to 692,891 barrels of 35 imperial gallons to the barrel and produced 9,714,776 gallons of refined illuminating oil which equals 225,923 barrels of refined oil of 43 gallons each.

Montreal *Journal of Commerce*: Beliveau and Archambault, wholesale dry goods merchants of this city, have suspended payment. Their liabilities are estimated at \$60,000 of which only \$12,000 is due in Europe. They succeeded the firm of Thibaudan, Beliveau & Archambault in June of last year. Mr. Thibaudan was the capitalist of the firm and sold out his interests to the other two for \$12,000 (payable monthly) on long time. During the past year they have not done well, and the monthly payments have been beyond their means. Hence the necessity for a suspension.