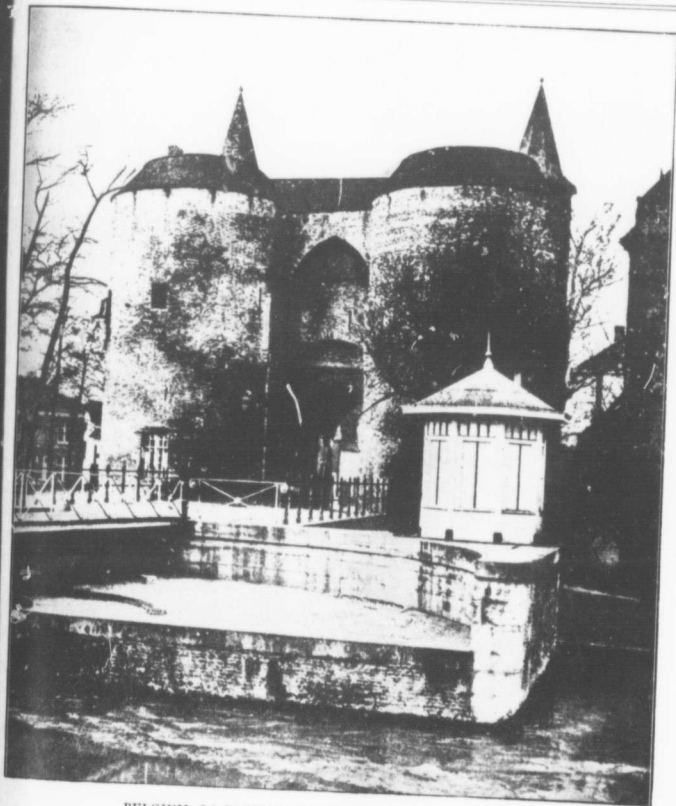


# SUNSHINE

Vol. XIV.  
Nos. 2 & 3

MONTREAL

FEB'Y—MARCH,  
1909

BELGIUM—LA PORTE DE GAND (The Gand Gate), BRUGES.

Built in 1361, but has since undergone many changes. The city of Bruges is an old borough. In the 13th century it was one of the most influential cities of Europe. The filling in by sand of the River Swyn gave Antwerp a lead, and to this along with other causes of a lesser nature attributed its partial decline. In recent years Bruges has revived.