

committee, consisting of George Hunt, Harry Nuttall and J. J. York (secretary), decided to present an address to the convention as their tribute of honor to the visitors.

A new branch of the Canadian Association of Stationary Engineers will be organized at Peterboro' this month with the following charter members: W. M. Foster, Engineer Bridge Works; John Morency, Peterboro' Porcelain & Carbon Co.; Wm Taylor, Can. Gen. Electric Co.; Ed Morency, Peterboro' Lock Works; Thos. Duncan, Can. Gen. Electric Co.; Wm Taylor, C.P.R. pumping station; Sylvester Potter, Chief Eng. Can. Gen. Electric Co.; Robt Bell, Peterboro' Porcelain & Carbon Co.; John Foden, Can. Gen. Electric Co. This branch would have been organized before but for the unexpected detention of Mr. Edkins in Montreal.

The annual meeting of the Ontario Association of Stationary Engineers was held in London on the 28th ult. The usual annual reports were adopted and all the officers of last year were re-elected to serve for another year, F. Robert being added to the board for the city of Ottawa.

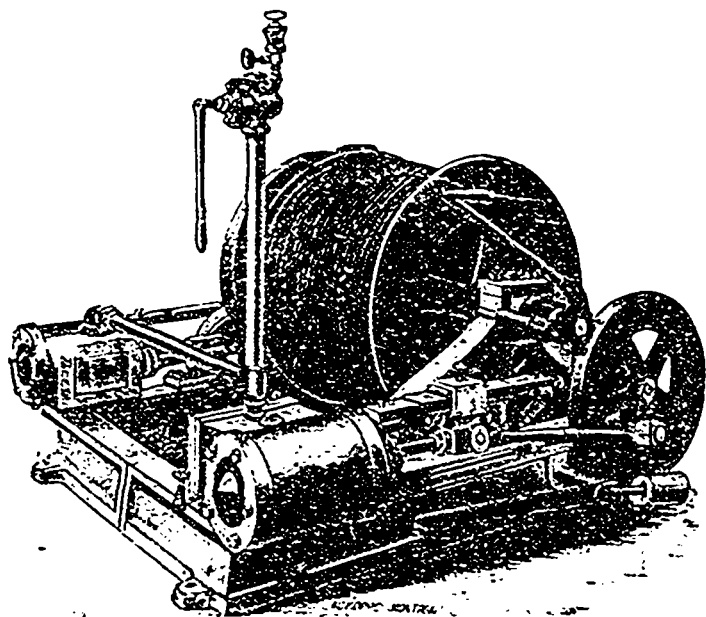
#### KINGSTON SCHOOL OF MINING.

From the report of the Kingston School of Mining it appears that the progress for the past year has been highly satisfactory. The number of mining students availing themselves of its opportunities was not large, but the school is a new one, and has hardly had time yet in which to become very well known. The prospects for the near future, however, are very encouraging. The total number of students attending the classes was 149, and the fees paid

amounted to about \$1,740. The "special classes" were a great success. Among these was a practical class for those who did not desire so much to undergo the course leading to the degree of *Mining Engineer*, as to get some knowledge in addition to that gained in the ordinary course of their experience as foremen, assayers, prospectors, etc. Another course of special lectures, illustrated by experiments and diagrams, was given at night for the benefit of those who could not attend during day. Another interesting feature was the holding of classes at other places, in order that persons residing some distance from Kingston should still be able to have the advantage of the school. The class at Marmora under this head proved a great success, and efforts are being made at Sudbury to have another held there.

Preparations are now being made to erect a mining laboratory at the school, to be equipped with a stamp mill, amalgamators and other apparatus. It is expected to be completed by the beginning of the session, October 1st. The school has acquired the Dominion exhibit of fossils shown at the World's Fair, Chicago, and also a part of the Ontario mineral exhibit.

THE CANADIAN ENGINEER, published at Toronto and Montreal, has been received. It is devoted to the interests of mining, locomotive, marine, sanitary and electrical engineering. It covers the field thoroughly, and is full of interesting articles gathered from all parts of the Dominion. As a representative of mechanical science, THE ENGINEER has commenced at home, and its neat make up shows that its mechanics are well skilled in the "art preservative of all arts." - *St. Louis (B. C.) Prospector*.



## HOISTING ENGINES

OF ALL SIZES AND  
DESCRIPTIONS

WITH BOILERS OR  
WITHOUT BOILERS

—FOR—

## Mines and Contractors

WRITE TO **INGERSOLL  
ROCK DRILL CO.**

**MONTREAL**

## THE JAMES ROBERTSON CO'Y, Ltd.

Manufacturers of

**White Lead, Paints  
Colors in Oil and Japan  
Lead Pipe, Traps, Shot  
Putty, Babbit Metal  
Saws and Barb Wire**

Importers of and Dealers in

Metals, Plumbers', Painters' and Tinsmiths' Supplies

**MONTREAL . TORONTO . WINNIPEG . ST. JOHN**



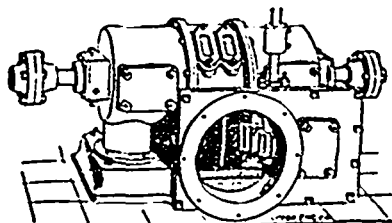
## HEARN & HARRISON

1640-1642 Notre Dame St.

**MONTREAL**

Transits, Theodolites,  
Surveyors' Compasses,  
Mathematicians'  
Instruments,  
Tracing Cloth, etc.

**REPAIRS A SPECIALTY**



Horizontal Type

## "Little Giant" Turbine Water Wheels

FOR ALL PURPOSES. HORIZONTAL AND VERTICAL.

Makers of . . . .

**WATER-WHEEL GOVERNORS  
MACHINE-DRESSED GEARING  
PULLEYS, SHAFTING  
BEARINGS, etc.**

Write for Catalogue and Gear List.

**J. C. WILSON & COMPANY**  
**CLENORA, Ont.**