

900 DROPS
CASTORIA
 Vegetable Preparation for Assimilating the Food and Regulating the Stomach and Bowels of
INFANTS CHILDREN
 Promotes Digestion, Cheerfulness and Rest. Contains neither Opium, Morphine nor Mineral.
NOT NARCOTIC.
 Recipe of Dr. J. C. FLETCHER
 Pumpkin Seed -
 Licorice -
 Sassafras -
 Turmeric -
 Cloves -
 Nutmeg -
 Mastic -
 Castor Oil -
 Steeped in Water
 A perfect Remedy for Constipation, Sour Stomach, Diarrhoea, Worms, Convulsions, Feverishness and Loss of Sleep.
 The Similar Signature of
J. C. Fletcher
NEW YORK.
 At 6 months old
35 Doses - 35 CENTS
 EXACT COPY OF WRAPPER.

CASTORIA
 For Infants and Children.
 The Kind You Have Always Bought Bears the Signature of
J. C. Fletcher
 In Use For Over Thirty Years
CASTORIA
 THE CENTAUR COMPANY, NEW YORK CITY.

NEW FRIENDSHIPS.
 The "Open Sesame" of Good Fellowship is Kindness and Sympathy.
 A young married woman with her husband was about to leave the town in which she had been born, raised and married, to make her home in another state where an excellent business opportunity had been offered to her husband. On the eve of departure she was expressing to some of her friends her regret as leaving, and assuring them that never would she find in her new home the valued and loving friends from whom she was going away. Her old grandfather heard her, and putting a hand on her shoulder, he said:
 "My dear, when you go to your new home take with you one thing. Show to every one with whom you come in contact that kindness and sympathy which is their due, and most important of all, respect the rights of others, and you will find no lack of friends and neighbors in your new home town."
 The young bride took his advice, and in the new town where she and her husband make their home they find that this policy has made them friends by the score. In these words of wisdom of the old grandfather lay the key to their happiness in their new home.

The Madonna Fichu.
 Why the madonna fichu is so called nobody seems to know, but at any rate it makes a satisfactory covering for the blouse of ugly cut or evil fit, since it conceals most of the back and front and a goodly portion of the sleeve tops.
 The madonna fichu actually is a shoulder cape, with a deeply rounded back reaching to the belt, and so broad is it at the shoulders that its lower edge terminates halfway between the top and the elbow of the sleeves.
 The front bands, instead of tapering, continue broad for their entire length and have square ends which come flatly against the figure and are fastened to some part of the frock by invisible hooks and eyes.

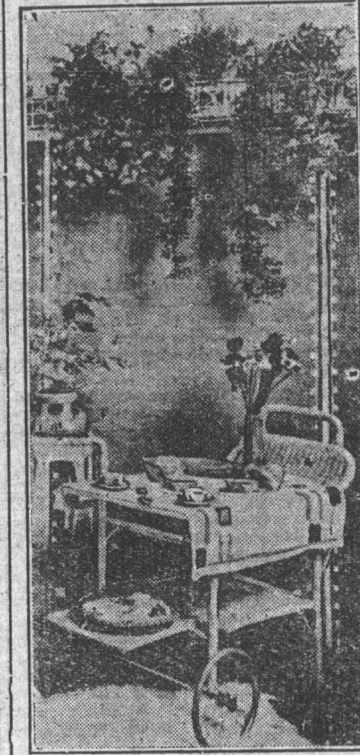
An Easy Egg Dish.
 Mix equal quantities of water and good real gravy, two tablespoonfuls of each, with a teaspoonful of vinegar and a seasoning of pepper and salt. Put the whole in a stewpan, and stir in gradually the yolks of two well-beaten eggs. When it thickens, and before it boils, have ready half a dozen nicely poached eggs. Pour the sauce over them, garnish with parsley and serve promptly. This is an excellent emergency dish, and only takes about ten minutes to prepare.

A Girl's Bedroom.
 French gray wall paper in soft satin finish is exquisitely charming for a young girl's bedroom. The background of gray is lovely for pink and blue flowered hangings and furnishings.

Shiloh
 The family remedy for Coughs and Colds. Small dose. Small bottle. Best since 1870.

A Powder Box Bag.
 A pretty and useful gift which may be made at the last minute as a bag for the powder box: Use a yard of four inch ribbon in a pretty flowered design, cut in thirds, lay one piece over the other and fasten together by briar stitching. Double when all seams are joined, and gather the ends enough to be sewn to a circular piece of cardboard two and a quarter inches in diameter. Cut two of these and cover with the ribbon. Having attached one side, which will be the right side as the seam will not show, cover with the other circular bit. An inch from the top set on a lace beading just wide enough to hold the draw strings and feather or briar stitch it on. Put into it a box of powder, and the whole makes a very acceptable present.

LUNCHEON SETS.
 Novelties in Summer Linens For the Bungalow.
 Several attractive novelties in summer linens for the country house are being shown now. Our old friend, the willow pattern, which has become as standard a thing in china as bread and butter are in food, has been adopted as an embroidery design for linen.
 Bungalow willow sets, as these luncheon outfits are called, are in white linen with the traditional Chinese design embroidered in two shades of blue. The price is \$14.50 for a set consisting of a twenty-seven inch centerpiece and three dozen dollies—one dozen in each of the three customary sizes. Small napkins to match at \$5 a dozen.
 Willow china can be used with this corresponding linen with striking effect. Too striking, in fact, for anything except country house entertaining. Even there it will seem to many women to be "too much of a matchness" and they will prefer to use a plainer china with the willow linen.
 Austrian linens are another novelty. They come in white, a pale grayish blue and a dull creamy yellow. The color is not solid, however, as many



PORCH TEA WAGON.

white threads are woven in with the dyed ones. The allover designs are very simple geometrical ones, scarcely perceptible at a distance. The fabric itself is rather heavy but much closer and firmer than some of the German linens used for summer luncheons and teas. The Austrian sets are a little more expensive than those in the willow pattern.

White Irish linen, embroidered in Japan in a deep border of small white knots with an occasional small floral spray in shaded blue silk, is the material for other sets, which cost \$25 apiece.

Very inexpensive sets, but at the same time very attractive ones, are in heavy natural color grass linen with scalloped edges embroidered in blue. These will be extremely serviceable and will make a novel and picturesque effect. And their price, \$4.50 a set (including centerpiece and three sets of dollies), will appeal to the woman who cannot afford to buy expensive table linens for her simple country house. For the summer home nothing is more convenient for informal entertaining than the cozy little tea wagon seen in the illustration. It may be wheeled out on the lawn, and as it is made from wicker the transit is a comparatively easy one for the person who pushes the cart.

Placing the House.
 Don't put the house too close to the main road. Have it at least 100 feet away. When you get it too close dust comes into the house, and you sacrifice the privacy of the home to a certain extent. Houses too close to the road do not look well and are not as valuable. Notice this next time you drive to town. Provide a windbreak and trees for shade. Have the main highway in view from certain windows in the house.

Power of Suggestion.
 The man was hale and hearty at 10 a.m.
 At 10.05 some one handed him a medical almanac.
 The man glanced at it and became interested. He read it through from cover to cover.
 At 10.25 he was suffering from diabetes, Bright's disease, malaria, dyspepsia, insomnia, lumbago, blood poison, cancer of the stomach, sciatica, scrofula and rheumatism.

Corns cripple the feet and make walking a torture, yet sure relief in the shape of Holloway's Corn Cure is within reach of all.

THIS is a HOME DYE that ANYONE can use
DYOLA
 The Guaranteed "ONE DYE" for All Kinds of Cloth.
 Clean, Simple, No Chance of Mistake. TRY IT! Send for Free Color Card and Booklet.
 The Johnson-Richardson Co. Limited, Montreal.

Veterinary Surgeon.

J. McILLICUDDY
 Veterinary Surgeon,
 HONOR GRADUATE ONTARIO VETERINARY College, Dentistry a Specialty. All diseases of domestic animals treated on scientific principle on. Office—One door south of the Guide-Advocate office. Residence—Main Street, one door north of Dr. Braudon's office.

CIVIL ENGINEER.

W. M. MANIGAULT,
 ONTARIO LAND SURVEYOR AND CIVIL ENGINEER,
 Box 200, STRATHROY, ONTARIO.

Auctioneer

J. F. ELLIOT.
 Licensed Auctioneer,
 For the County of Lambton.

PROMPT attention call orders, reasonable terms or orders may be fit at the Guide-Advocate office.

INSURANCE

J. H. HUME.
 AGENT FOR
 FIRE, ACCIDENT AND SICK BENEFIT COMPANIES.
 REPRESENTING
 Five Old and Reliable Fire Insurance Companies.
 If you want your property insured please call on J. H. HUME and get his rates.
 —ALSO AGENT FOR—
 C. P. R. Telegraph and Canada Permanent Loan and Saving Co.
 Ticket Agent For C. P. R.—Tickets sold to all points in Manitoba, Northwest and British Columbia.

THE LAMBTON Farmers' Mutual Fire Insurance Company.
 (Established in 1875)

J. W. KINGSTON President.
THOS. STEADMAN Vice-Pres.
JAMES ARMSTRONG Director.
A. G. MINNELLY Director.
THOS. LITHGOW Director.
JAMES SMITH Director.
W. G. WILLOUGHBY (MANAGER AND SEC. TREAS.)
J. F. ELLIOT FIRE INSPECTOR.
P. J. McEWEN AUDITOR.
ALEX. JAMIESON AUDITOR.
PETER McPHEDRAN, Wanstead, P.O. AGENT, for Warwick and Plympton.

Farmers, Attention

WE HANDLE
 COCKSHUTT IMPLEMENTS
 MELOTTE CREAM SEPARATORS
 KEMP MANURE SPREADERS
 TORONTO WINDMILLS
 BUGGIES, WAGONS
 GASOLINE ENGINES
 LIGHTNING RODS
 —AND—
 EVERYTHING NEEDED ON THE FARM

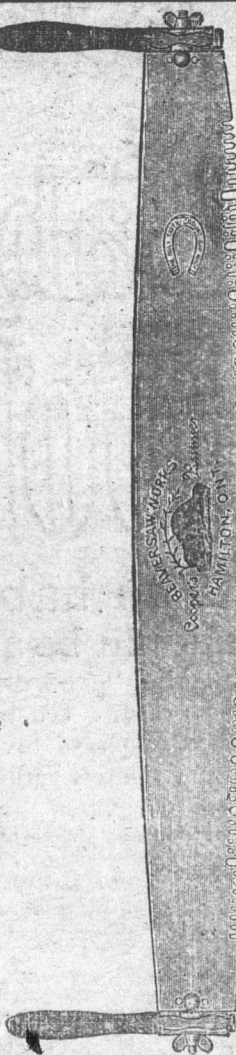
Call and let us talk matters over.

CAMERON & GRAHAM
 OPPOSITE HOWDENS' GROCERY,
 167-1f

GRAND TRUNK RAILWAY TIME TABLE.

Trains leave Watford Station as follows
 GOING WEST
 Accommodation, 27 8:44 a.m.
 Accommodation, 29 2:45 a.m.
 Chicago Express, 5 9:27 p.m.
 GOING EAST
 Ontario Limited, 46 7:43 a.m.
 Accommodation, 25 12:53 p.m.
 New York Express, 2 3:00 p.m.
 Accommodation, 30 5:16 p.m.
 C. VALL, Agent Watford

JUST IN
 5 Doz. Guaranteed X Cut Saws
 : : AND : :
 8 Doz. Handmade Axes
 INSPECT OUR DISPLAY BEFORE PURCHASING
T. DODDS & SON
 SAWS, AXES, SAW HANDLES
 FILES, SETS, JOINTERS,
 AX-SLIPS



House Furnishings
 Our aim is to keep the latest and most popular goods in our line, and carry the FINEST ASSORTMENT of all lines of FURNITURE for
Parlor, Dining Room, Bedroom, Library or Kitchen.
 Comfort, Elegance, Durability and Value are features that our goods are noted for.
 No Big Profits to Pay Here
 Our prices are as low as consistent with reliable goods.
 Let us show you the new patterns.

HARPER BROS.
 PHONE 31
 FINE FURNITURE FUNERAL DIRECTORS

Kumfort Over-Shoes
Rubbers and Over-Stockings All in One.
 Easy to put on and take off. Fit well—Look well—Wear well. All sizes for women and children.
 Buy them and protect yourself and family from winter ills.
 Canadian Consolidated Rubber Co. Limited, Montreal.
All Dealers

son
 Ran... sold where... back... guar... in this... did... e... dy's
 verning body should be of the local... should be is for local... ated and im- be width of automobile, uck or other
 ERVES—Ner- tributable to stomach dom- A course of will still all er, and by resal action re- ion. There is n the correct- digestive pro- lone so effect- l to by thous- m
 you go home
 gth and er Oil simlated curative lver Oil, ospites, onchitis, diseases, -Dru-Co r Oil will It from Druggist, or \$1.00 313
 Co.