

**Tips For Motorists**

**OVER HEATING PREVENTIVE**

In cars that use the thermo-syphos cooling, the water system should always be kept completely filled. If the water level drops considerably, the circulation of the water will be reduced and may even be stopped altogether. With a pump system the pump continues to force the water through the system, regardless of how much or how little of the liquid there may be, but the circulation of the syphonic system is simply a natural flow and this is interrupted in case a considerable portion of the outlet pipe is empty, resulting in overheating of the engine.

**WISE USEFULNESS**

Not only is the heavy vise a valuable part of the garage equipment for its obvious service, but it may often be advantageously used for straightening bent parts. In doing this care should be taken to place the part to be operated on in such a way that the pressure comes against the support of the vise, as this obviates severe strain on the outer jaw and screw thread.

**CLEANING SEAT COVERS**

Seat covers may usually be cleaned very satisfactorily with a non alkaline soap and warm water. The best way to carry out the job is to take the cover off and give them a good scrubbing on the board.

**CLEANING BRASS CASTINGS**

Brass castings may be cleaned in a moment by dipping them into a solution of three parts sulphuric acid to three parts nitric acid, to which after they have been mixed is added a quart of common salt, the whole being stirred until salt has been dissolved. If this is placed in an earthenware vessel, the brass castings can be dipped in it, removed immediately and rinsed in clear water. The castings can be made as bright as new by this method, and there is little trouble involved.

**GLASS CLEARER**

It frequently comes in handy to know that a little bottle of kerosene and glycerine mixed in equal parts will clear the glass of the windshield of the rain drops and give clear vision ahead. This compound operates to spread the rain drops in thin even sheets all over the surface instead of letting it stand in globules

Minard's Liniment used by Physicians

**FRICION COSTS A FLOCK OF MONEY**

**Elimination of Lost Motion Saves Many Dollars for the Motorist**

"It is a well-know fact among automobile engineers that friction and lost motion cost hard-earned dollars. Carelessness and neglect on the part of the automobile driver causes approximately 70 per cent of the loss traceable to these two enemies of the motor car or truck," says the expert.

"Friction as everybody knows means simply rubbing, rubbing, rubbing; if it is kept up it causes wear; wear causes lost motion; lost motion is something gone—lost completely. Some things are recoverable after being lost; not so with mechanical lost motion. It is impossible to get away from all friction; to eliminate friction in motor car construction to as great extent as possible has been the goal of the automobile engineers since the conception of this great means of transportation was thought of many years ago."

"From another standpoint, lost motion is the direct cause of riction, and this is the point that I wish to impress. A man becoming the owner of an automobile or truck should learn the different minor as well as major adjustments on his car, and as quickly as possible, and in this way keep behind the rattles and the knocks as they develop."

**MITCHELL IS CLASSY CAR**

One of the "classiest" cars seen on the Wolfville streets these days is the Mitchell, which is being sold by W. W. Holmes, of this town. The Mitchell Company are certainly turning out a car this year that is worth its value. In the 1921 models one notices many refinements and improvements which give every indication of extensively popularizing the Mitchell this year. The Mitchell Motors Co., Inc., of Racine, Wis., have been building cars for nineteen years, and for the past eleven years have been turning out six cylinder models. The front appearance of the new model has been especially improved, while a newly designed front apron and a strengthening bar that connects the two side members of the frame adds a touch of character that is only found on the higher priced cars. The front fenders are more full and better cover the inside front wheels. The fenders have the latest crown shape with edges wired for strength and neat appearance. All the 1921 Mitchells are equipped with the Almite High Pressure Lubricating System, thus making obsolete the old style grease cups. Lubrication can be taken care of without soiling hands or garments. Simkin bearings are used in both front and rear wheels.

She shrieked and moaned and tore her hair,  
And cried in deep dejection,  
"My new dress won't be finished  
And tomorrow's the election!"  
—The Sun Dial.

**NEW AUTO AGENCY FOR WOLFVILLE**

The local agency for the Briscoe car has been secured by C. A. Bentley & Son, of the Wolfville Garage.

Briscoe cars have always had an enviable reputation for economy of fuel and tires; and the 1921 Briscoe more than maintains the records of its predecessors. First credit must be given, of course, to the famous Briscoe Motor, still further refined in this series. Its superior design and construction enable it to give full power with a minimum consumption of gasoline and oil.

The straight line drive through Thermoid universal joints that are mechanically held in absolute alignment delivers the power to the axle with the minimum loss. Absence of radius and torque rods reduces the amount of unsprung weight and eliminates all rigid connection between axle and frame—vital features in giving great tire mileage.

**LOW WATER**

Operating the engine without sufficient water or with no water at all, may result in injury to the spark plugs. To give service without cracking, the plugs must be properly cooled and provision for this is generally made in the water jacketing system. When the water runs low the plugs become hotter and there is great danger of their being damaged.



"Grey Sox" Tubes

"Red Sox" Tubes

**Cleaning Up Adjustments**

Adjustments on faulty tires rarely satisfy—they are annoying too, and take time. Except in the case of Ames Holden "Auto-Shoes"

Should the necessity for an adjustment arise on any Ames Holden "Auto-Shoe", an obviously honest effort will be made to meet you—frankly and fairly, without quibble or red tape.

**AMES HOLDEN "AUTO-SHOES"**

Cord and Fabric Tires in all Standard Sizes

For Sale By

WOLFVILLE GARAGE, - Phone 218, - Wolfville.  
E. J. WESTCOTT, - - - Phone 138, - Wolfville.

**Acetylene Welding**

Battery Repairing and Charging.  
Cylinder Re-boring and Accessories.

J. F. CALKIN  
MAIN STREET EAST

**First Class Automobile Repairing**  
DONE AT  
**EVANS' GARAGE**

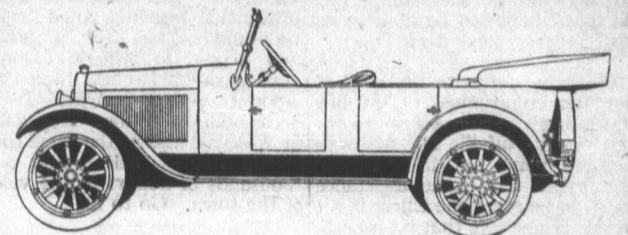
Overland and Studebaker Service Work

Gas, Oils and Supplies

Storage Batteries Repaired and Charged

ROY N. EVANS, WOLFVILLE  
PHONE 250.

**Maxwell & Chalmers Automobiles**



Maxwell Roadster & Touring \$1425.00 delivered  
Chalmers 5 Passenger Touring \$2475.00

The Good Maxwell at our Garage invites your inspection and a demonstration.

**F. J. PORTER**

Local Dealer for Kings County, Wolfville and Kentville.  
C. A. PORTER, Provincial Distributor, Wolfville, N. S.

**The Wolfville Garage**

C. A. BENTLEY & SON, Prop.

Expert Repair Department  
**FORD SALES AGENTS**

FORD PARTS AND ACCESSORIES

Dominion Tires and Tubes, Gas, Oils.

FREE AIR, Etc.

TAXI SERVICE—CAREFUL DRIVERS

PROMPT AND EFFICIENT SERVICE

PHONE 218

**ELECTRICAL WORK**

OF ALL KINDS

HOUSE WIRING A SPECIALTY

All work guaranteed and prices right.

**L. W. PORTER**

Phone 93-21 WOLFVILLE Box 192.

**Light Six McLaughlin**

The Greatest Car Value in Existence

COMPARE IT WITH OTHER CARS UP TO \$500 HIGHER IN PRICE.

COMPARE ITS POWER—44 actual brake H. P., 2 to 65 miles per hour in high gear.

COMPARE ITS EFFICIENCY—Average seasons mileage 22 to 24 miles per gallon. Least oil of any car. Wonderful tire mileage.

COMPARE ITS COMFORT—Yourself personally, test its deep luxurious cushions and easy springs.

COMPARE ITS FINISH—Heavily padded solid leather upholstery. Mahogany instrument board. Famous McLaughlin body work by the finest vehicle builders in Canada. Remember, imitation leather peels and cracks quickly and spoils the second hand price.

COMPARE ITS PRICE, \$1785.00, \$400.00

lower than any other 6 cylinder car. Lower even than any 4 cylinder car that any way approaches it in quality and comfort.

COMPARE ITS DURABILITY

We invite you to call at our Wolfville showroom when we will be pleased to demonstrate not only new cars but Light Sixes that have been in use one, two and three years. Investigation and comparison will convince you that McLaughlin Light-6 is the finest car you can purchase under \$2,200.00.

**Acadia Automobile Agency**

WOLFVILLE, N. S.

**STUDEBAKER**

This NAME PLATE on YOUR CAR Means

Satisfaction, Service, Class

Come to

**W. A. REID'S SHOW ROOMS**

and LOOK THEM OVER

and BE CONVINCED

Agents and Service Station for Studebaker & Overland Cars

**PEERLESS DRY GINGER ALE**

Can be supplied by the bottle (cheaper by the case), from all Grocers, Druggists and Confectioners. If not write

**GEO. H. YEATON & SON, Hantsport, N. S., Wholesale Distributors for Valley**

J. & T. Morris, Manufacturers "Peerless" Beverages, Charlottetown, Prince Edward Island.

Claimed by experts to be the finest Dry Ginger Ale made or imported into Canada.

The Bottle Wrapped in Pink Tissue Paper

Bacteriologically Pure.

Safe for Children

Results Assured If You Advertise in THE ACADIAN.