

HERE'S a SUMMARY of the GRAIN SITUATION and WHAT I CAN DO FOR YOU

Southern and South-western Manitoba—The wheat will not be above a fair average, owing to rust. My knowledge of handling shrunken grain helps you to dispose of your crop to best advantage. Northern Manitoba—There will be plenty of good wheat here, with but little effect from rust. Handling this is a speciality of mine. The Territories—A splendid crop, although not tremendous. You will be pleased with the prices I can get you. Of course frost and unforeseen circumstances may alter the outlook, but they have always to be reckoned with. Write me at once. Grain brought by the car lot direct from shipper. Prompt and straight settlements.

T. H. KELLETT, MEMBER GRAIN EXCHANGE. WINNIPEG, MAN.

EDMONTON & ATHABASCA STAGE

Stage leaves Edmonton every Tuesday morning for the Athabasca Landing, carrying mail, express and passengers, arriving at Athabasca Landing Wednesday evening. Leave Athabasca Landing Friday morning, arriving in Edmonton Saturday evening. Good stock and conveyance. Good meals along the way. Stage connects with boats for the Lesser Slave Lake and all points north.

RATES, \$7. EXPRESS, 3c. POUND. GEO. E. MACLEOD, P. O. Box 229, Edmonton

THE MANITOBA FIRE ASSURANCE CO.

Incorporated by Special Act, A. D. 1886. HON. H. J. MACDONALD, K. C., President. J. T. GORDON, Esq., M. P. P., Vice-Pres. H. H. BECK, Managing Director. All classes of insurance written. Agents wanted in all unrepresented districts in Manitoba and the Northwest Territories.

FEATHERS

We will buy feathers of all kinds at highest current prices. Write us at once for particulars. THE G. C. EMERSON BEDDING CO. Box 688, Winnipeg.

ADVERTISE IN THE ADVOCATE.

The present indications point to a spotted wheat crop in Southern Manitoba on account of rust. We have had a great deal of experience handling shrunken grain. You may have the benefit of this experience by shipping your grain to us.

REFERENCES: Canadian Bank of Commerce, Commercial Agencies.

The upper half of Manitoba and the Territories have a fine big crop if not damaged by frost, and we would like to show you prices we can get for grade wheat. Let us prove these facts to you, as we are doing to your neighbors.

McLAUGHLIN & ELLIS, Grain Exchange, WINNIPEG

Joseph W. Belford PLUMAS, MAN.

Real Estate, Loans & Insurance Ocean Steamship Agent Improved and Unimproved Farms for sale in Plumus and Glensmith districts. Either purchases or sales promptly attended to.

CHILLIWACK, B. C.

Farms For Sale

Suitable for dairying, hop-raising, poultry and small fruits, mixed farming and fruit-growing. For market prices of produce and for further particulars write to

JUSTINIAN PELIY, Chilliwack, B. C.



WIDE-TIRE IRON WHEELS FOR WAGONS.

Made any height, any width of tire, and to fit any axle. Just the thing for the farm, are stronger, lighter and cheaper than wooden wheels.

OUR QUEEN CITY HANDY WAGON

with iron wheels and wide tires. Is low and convenient for farm and general work. Made by skilled workmen and of the best material. Guaranteed to carry five thousand pounds. Write for catalogue with full description of both wheels and wagon.

DOMINION WROUGHT IRON WHEEL CO. ORILLIA, ONT. LIMITED. H. F. ANDERSON & CO., Winnipeg, Agents for Manitoba and the N-W.T., always carry a full stock of our "Handy Wagons."

BRITISH COLUMBIA CHILLIWACK FARMS

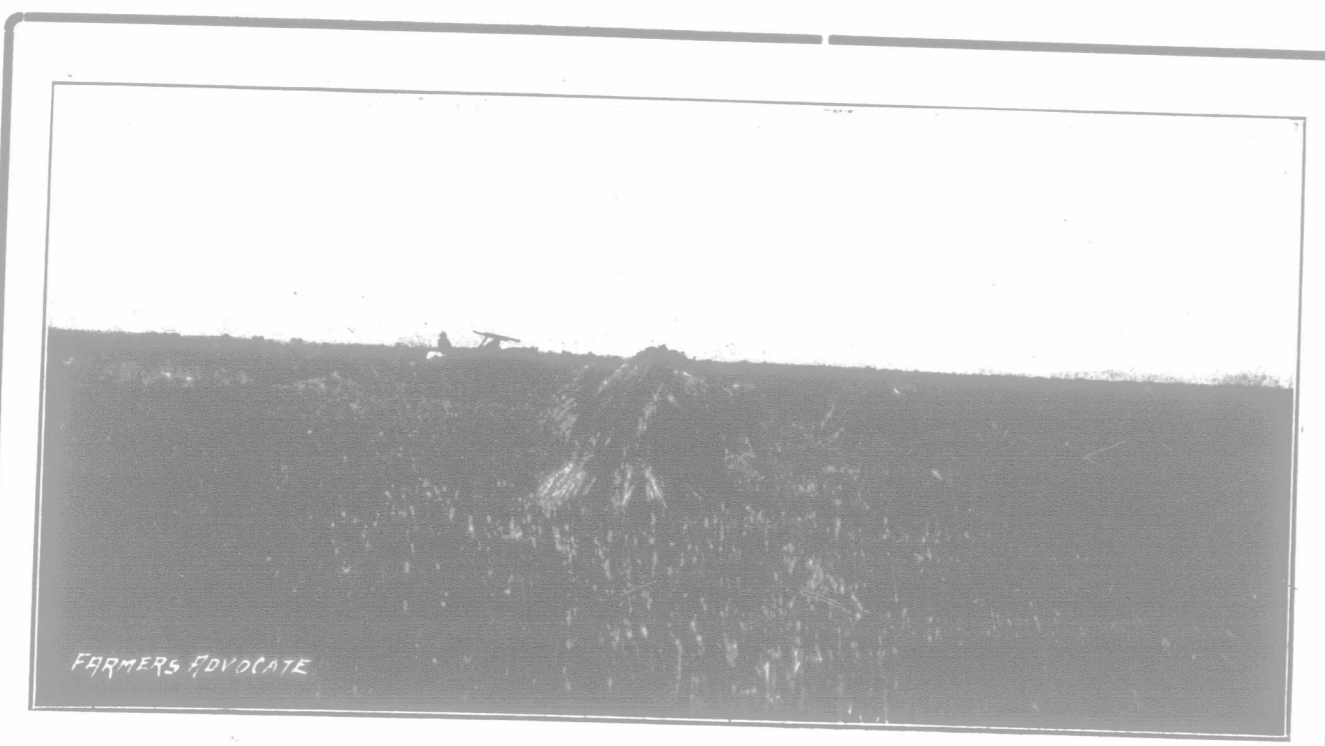
I have the largest list of farms for sale in this Valley, and would like to correspond with anyone considering visiting this country.

JOSEPH SCOTT, CHILLIWACK, B. C. Special to Farmers

HALF-TONE ENGRAVING

Have a nice half-tone engraving made of some of your pet stock. Write for samples and information. Mail orders is our speciality. WM A MARTEL & SONS, Half-tone Engravers, Line Etchers, Photographers, 278 Rupert St., WINNIPEG, MAN.

Matsqui is 30 miles from New Westminster, 43 miles from Vancouver, 28 miles from Whatcom.



A Harvest Scene at Matsqui.

Crops Never Fail. No Violent Storms. Best Markets in Canada for Farm Products.

Canadian Pacific Railway Station on the Property.

3 Steamboats Daily to New Westminster.

Come and see the garden spot of the Fraser Valley.

Fruit Land, Hay Land, Cereal Land. Admitted by all who have seen it to be Unsurpassed Anywhere.

Clover is a native grass. Blue-joint, red-top and other grasses in abundance. Plentiful supply of pure mountain spring water.

Pastures green all the year.

An ideal dairying and mixed farming country.

Though but lately placed on the market, settlement is proceeding more rapidly than anywhere on the Fraser, and Matsqui will soon have the appearance of a great collection of gardens.

Schools, churches, stores, condensed-

milk factory and creamery already established. Sawmill adjacent to prairie. Cheap lumber.

6,000 acres divided into 40-acre lots is being quickly settled.

Come while you can buy at first hand.

Prices less than land of same quality in Manitoba.

Apply to ALEX. CRUICKSHANK, Matsqui, British Columbia.

In answering any advertisement on this page, kindly mention the FARMER'S ADVOCATE