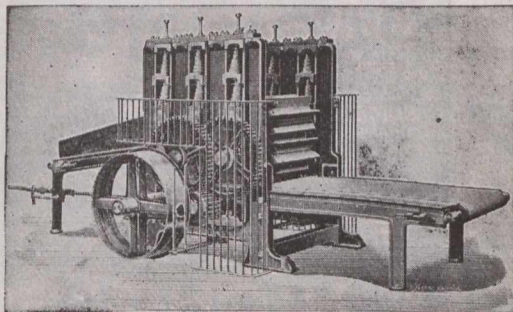


TELEGRAPHIC ADDRESS:—"ENGINEERS, DUNDEE."

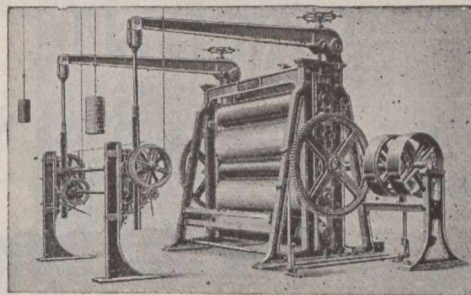
# URQUHART, LINDSAY & CO., Limited,

Engineers, Millwrights and Machine Makers,



**Blackness Foundry,  
DUNDEE, - SCOTLAND.**

Makers of all kinds of  
**Weaving and Cloth-  
Finishing Machinery for  
JUTE & LINEN FABRICS ;**  
INCLUDING  
Jute Openers ;  
Jute Softeners ;  
Bleaching Machinery  
Twine Tarring Machines  
Patent Cop and Warp  
Winding Machines ;  
Patent Beaming and  
Starching Machines ;



**LOOMS** of all kinds ; Patent **CROPPING MACHINES** **MEASURING & DAMPING MACHINES ;** **CALENDERS ;** Patent Hydraulic **CALENDER-MANGLES ;** **STRIPPING, ORISPING and LAPPING MACHINES ;** **CALENDERS, &c. ;**  
**STEAM ENGINES.** Shafting, and Gearing ; **Cranes, Elevators, Fire-proofing, and other Cast-iron Works ;** also, **LINOLEUM MACHINERY ;** and Hydraulic Presses and Pumps of all Sizes.

*Contractors to the British Admiralty and India Office.*

**H. Charlton & Co.,**  
SOUTH SHORE Rd.  
**Engineers & Anchor Manufacturers,**  
Gateshead-on-Tyne, - England.  
Telegraphic Address: "CHARLTON HAWKS, GATESHEAD."

**YOU WANT ANCHORS ?**

USE ours, which are of great holding power and moderate cost. Used by British Admiralty, Foreign Governments and the Mercantile Marine. Complete outfits of Chains and Anchors supplied ; made to Admiralty, Lloyd's or Bureau Veritas inspection.



**YOU WANT FANS ?**

WRITE to us for particulars of the "SIROCCO," which is of high efficiency and moderate cost. Special system of induced and forced draught. If you want more steam from your boilers, or to save coals, write us.

Sole Manufacturers of

**... IMPROVED MARTIN'S PATENT ANCHORS ...**

For the Improved Martin's Anchor Company, Limited London.

We have orders now in hand for over 300 tons of our Anchors for British Admiralty alone.

**Journal of Commerce Job  
Department for Printing.**

ESTABLISHED 1810.

# JOHN SPENCER & SONS, LTD.,

(Works:—At NEWBURN and OUSEBURN, NEWCASTLE-ON-TYNE),

**Newburn Steel Works,**

**NEWCASTLE-ON-TYNE, ENGLAND,**

Offices: { Newcastle-on-Tyne: 27 Westgate Road,  
London: Cannon Street Buildings, 139 Cannon Street.

ON ADMIRALTY LIST.

## MANUFACTURERS OF STEEL

By the Siemens', Cementation, and Crucible Processes.

**SHIP and BOILER PLATES up to 11 Feet Wide.**

Ingots, Slabs, Blooms, Billets, and Bars of all sizes.  
Rivet Steel. Special Mild Steel for Boiler Flues.

**STEEL FORGINGS, STEEL CASTINGS,**

*Of all descriptions, to any weight, Rough or Machined.*

**CRANK AXLES & SHAFTING HYDRAULIC PRESSED.**

**Springs.**—Laminated, Volute, Patent Improved Volute, Conical, Spiral (Original Manufacturers of Volute Springs).  
**Buffers,** of Wrought and Cast Iron, of all descriptions. Best Cast Steel for Tools from finest Dannemora Brands. Best Cast Steel Files. **IRON FORGINGS** of all kinds.

**FOSTER'S & FOWNES' Patent CRANK SHAFTS.**

**WASTENEYS SMITH'S PATENT STOCKLESS ANCHORS,**

*Special price to Canadians under the New Tariff.*

# THE ROSE STREET FOUNDRY

and Engineering Company, Limited,

+ ROSE STREET, +

INVERNESS. - - Scotland.

— MANUFACTURERS OF —

**RAILWAY CHAIRS, GRATES, FENDERS**

— Etc., Etc. —