

Designs for a Variety of Uses

Farm and Dairy patterns shown in these columns are especially prepared for Farm and Dairy's Women Folk. They can be relied upon to be the latest models and include the most modern features of the popular patterns. When ordering Farm and Dairy your order please be careful to state bust or waist measure for adults, age for children and the number of patterns desired. Price of all patterns is Our Folks, in each Address all orders to Pattern Dept., Farm and Dairy, Peterboro, Ont.

DOESN'T this bright, spring-like weather make you think of spring sewing? Are you making plans for your spring dresses and coats for yourself and the children? One appreciable feature about the styles this season is that economy and smartness can be combined. Especially is this the case when the use of two or three colors in a dress can be utilized. Why not go to you garret and select some of those dresses that are out of date, and by selecting some of the simple styles you can, by buying perhaps a contrasting material or silk of some sort for trimming to go with the dress, have a practically new gown for spring at little expense.

There is a tendency in this day of extreme fashions to have the children's frocks too elaborate. Same fashions can be found for children, and the simple frock with the girlish appearance should always receive the preference. Loose waisted and low belted effects are excellent style for spring and summer dresses for children; not only for dresses, but coats as well.

A most attractive frock for the growing girl is shown in design No. 9757. No doubt you are planning to make some plain school dresses, as those that have been worn all winter will be nearly past wearing; a frock fashioned after this Balkan style would be very suitable for this purpose. White linen, with a simple finish of stitching and a neat line of light blue, would make a pretty dress for summer. Four sizes: 8, 10, 12, and 14 years.

A comfortable stylish top garment for the little girl is shown here with in design No. 9779. This design is easy to develop. It is fitted by shoulder and underarm seams. The right front is shaped to cross over the left. The two-piece sleeve is finished with a deep cuff, and a neat collar completes the neck edge. Four sizes: 8, 10, 12, and 14 years.

For the woman who desires a prac-

tical and convenient apron the one here illustrated, 9777, should fill all needs. Notice that it covers the dress completely. The fullness of the back

is confined by a belt which may be omitted if preferred. Three sizes: Small, medium, and large.

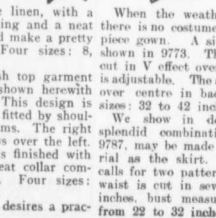
A negligee is an almost indispensable part of a wardrobe, and this very attractive lady's kimono No. 9770, serves to make a very comfortable lounge robe. Figured crepe in blue tones is here shown with trimming of blue satin. The model is good for cashmere, silk, flannel, or flannel-ette. The waist is in Empire style. Six sizes: 34, 36, 38, 40, 42, and 44 inches bust measure.

The shirt waist styles that are now being featured are most comfortable, and for summer the low collar is most becoming. Style No. 9634 shows one of these attractive blouses. This one was featured in pink wash silk, with a simple stitching for a finish. Six sizes: 32 to 34 inches bust measure.

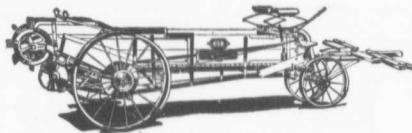
A good style of dress for the growing girl for school and general wear is featured in this Russian dress, 9768. The collar and cuffs may be of contrasting material. Blue serge would be particularly suited to this model. Panama corduroy, Bedford cord, galatea, or gingham would also make up to good advantage. Five sizes: 8, 10, 12, 14, 16 years.

When the weather becomes warm there is no costume so neat as the one-piece gown. A simple model is here shown in 9778. The waist fronts are cut in V effect over a chemise that is adjustable. The skirt has deep plaits over centre in back and front. Six sizes: 32 to 42 inches bust measure.

We show in designs 9757-9762 a splendid combination. The waist, 9757, may be made of the same material as the skirt. This illustration calls for two patterns, 10c each. The waist is cut in seven sizes: 32 to 44 inches, bust measure, and the skirt from 22 to 32 inches waist measure.



International Harvester Manure Spreaders



THE I H C LINE

GRAIN AND HAY

MACHINES

Reapers, Binders,

Hakes, Stacks,

Hay Presses,

Hay Leaders,

COCK MACHINES

Plowers, Pickers,

Brushes, Cultivators,

Essence Cultivators,

Shedders, Thrillers,

Combination,

Pay and Spring-Tooth,

and Disk Harrows,

Cultivators,

GENERAL LINE

Oil and Gas Engines,

Oil Tractors,

Manure Spreaders,

Cross Separators,

Farm Wagons,

Motor Trucks,

Trucks,

Cable Drills,

Feed Grinders,

Kiln Grinders,

Blender Twine

INTERNATIONAL Harvester manure spreaders have a score of good features in their construction. Each one is the result of careful field experiment.

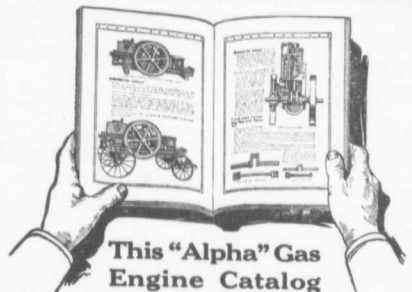
An I H C spreader is low enough for easy loading, yet it has plenty of clearance underneath. The rear axle is well under the load, rear wheels have wide rims and Z-shaped lugs, insuring good traction under all conditions. Frame, wheels, and all driving parts are of steel. Apron tension is adjusted by a simple device. Winding of the beater is prevented by large diameter, and beater teeth are strong, square and chisel-pointed.

International manure spreaders are built in several styles and sizes, low or high, endless or return apron, for small farms or large. Examination will show sturdiness of construction in every detail. Repairs, if ever needed, may always be had of the local dealer. Examine International spreaders at the dealer's. We will tell you who sells them, and we will send you interesting catalogues.

International Harvester Company of Canada, Ltd

At Hamilton, Ont.; London, Ont.; Montreal, P. Q.; Ottawa, Ont.

St. John, N. B.; Quebec, P. Q.



This "Alpha" Gas Engine Catalog

is now ready for mailing to all who are interested in reliable and economical farm power

It tells all about an engine which is so well built that you can always depend upon it; which is so simple that a boy can run it; that can be run on either gasoline or kerosene; an engine that starts on the magneto and doesn't stop until you want it to; an engine that will do any kind of work, in any weather, anywhere.

The main object of this handsomely printed and fully illustrated book is to show you how very adaptable the "Alpha" Engine is, and how it is possible for you to select from the "Alpha" line just the size and type of engine and the equipment that will best fit your needs for farm power.

Eleven sizes, 2 to 28 horse-power. Each furnished in stationary, semi-portable, or portable style, and with either hopper or tank cooled cylinder.

DE LAVAL DAIRY SUPPLY CO., Ltd.

LARGEST MANUFACTURERS OF DAIRY SUPPLIES IN CANADA

MONTREAL PETERBORO WINNIPEG VANCOUVER