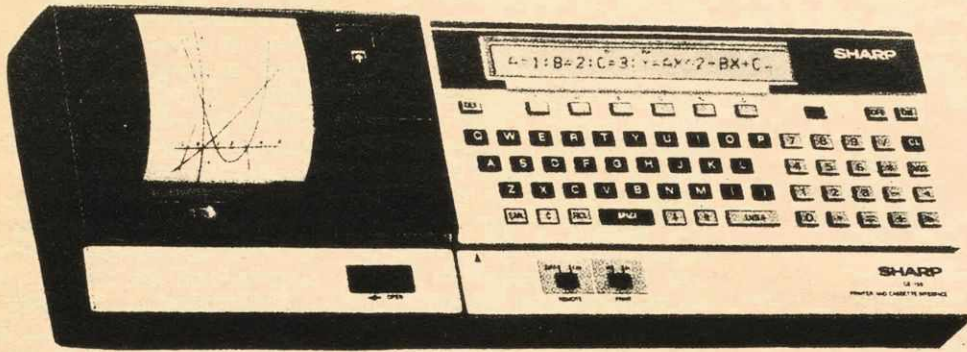


10% Discount for students

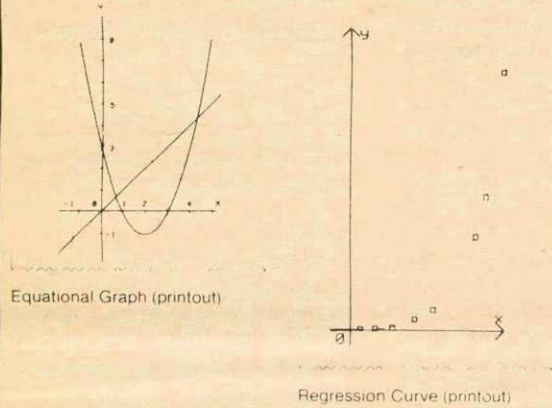
SHARP PC-1500

Pocket Computer



A New, Upgraded Pocket Computer with Expanded Capacity and Greater Convenience for Use in Business, Management, Engineering, and Hobbies

Engineering Use



Once programmed, complicated technical calculations become simple

If you need more than a hand-held scientific calculator but find a personal computer too bulky, the PC-1500 may be just right for you. Technical calculations in areas such as mathematics, statistics, measurements, and mechanics are done superbly and easily. This pocket computer more than meets the requirements of most engineers and scientists.

Specifications

PC-1500

Number of calculation digits	10 digits (mantissa) + 2 digits (exponent)
Calculation system	According to mathematical formula (with priority judging function)
Program system	Stored system
Program language	BASIC
CPU	C-MOS 8-bit CPU
Capacity	ROM: 16K bytes RAM: System area: 0.9K bytes User area: 2.6K bytes Fixed memory area (A-Z, AS-ZS): 624 bytes Basic program/data area: 1850 bytes Reserve area: 188 bytes
Calculations	Four arithmetic calculations, power calculations, trigonometric and inverse trigonometric functions, logarithmic and exponential functions, angular conversion, extraction of square root, sign function, absolutes, integers, and logical calculations
Editing function	Cursor shifting (←, →) Insertion (INS) Deletion (DEL) Line up and down (↑, ↓)
Memory protection	C-MOS battery back-up
Display	7 × 156 dots mini-graphic display 26-digit liquid crystal display (English upper and lower-case letters, numbers, special signs, etc.)
Component	C-MOS LSI, etc.
Keys	65 keys (Alphabet keys, 10 numeric keys, function keys, software keys)
Power source	Dry battery (SUM-3) × 4 Approx. 50 hours
Power consumption	0.13 W
Operating temperature	0°C ~ 40°C (32°F ~ 104°F)
Dimensions	195(W) × 25.5(H) × 86(D) mm 7-11/16" (W) × 1" (H) × 3-3/8" (D)
Weight	375 g (0.83 lbs.)
Accessories	Soft case, dry battery (SUM-3) × 4, template × 2, name label applications manual, instructions manual

Colour graphic printer

Printing digits	Standard 18 digits (36, 18, 12, 9, 7, 6, 5, 4 digits selectable)
Printing system	X-Y axis plotter system
Printing mode	Graph/text switchable
Character sizes	9 different sizes from 1.2 × 0.8 mm to 10.8 × 7.2 mm (from 1/16" × 1/32" to 7/16" × 9/32")
Paper width	58 mm (2-9/32")
Printing colours	Red, blue, green, black
Printing directions	Right, left, up, down
Minimum step width	0.2 mm (1/64")
Printing speed	Max. 11 characters/sec.

Cassette interface

Connection	Up to two cassette tape recorders
Remote control	On/Off

CE-151 Memory Module (Optional)

Capacity	4K-byte C-MOS RAM
----------	-------------------

CE-155 Memory Module (Optional)

Capacity	8K-byte C-MOS RAM
----------	-------------------

SHARP The brains behind the brains

SHARP EL-515

New Solar

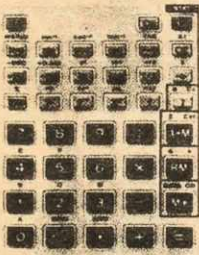
SHARP EL-515

Solar Scientific Calculator

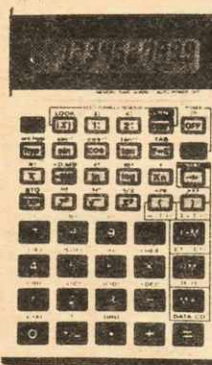
You'll never need batteries with this solar scientific!

Features:

- Random Number Generation and Right Shift Function
- Direct Formula Entry
- 50 Pre-programmed Functions



SHARP



SHARP EL-512

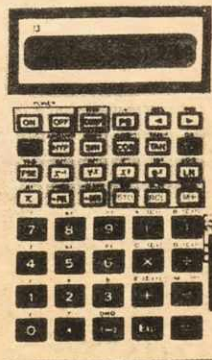
Improved Scientific Calculator

Wallet type scientific calculator with 61 functions and the features most needed by students.

Features:

- Direct Formula Entry and Multiformula Reserve
- Decimal/Hexadecimal System Conversion

SHARP EL-5103



SHARP EL-5103

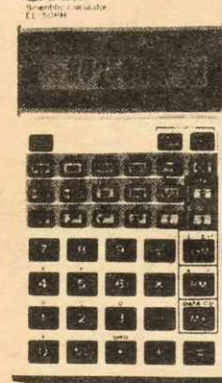
Scientific Programmable Calculator

Big on features, small in size, Sharp's scientific calculator is easy to use and very versatile.

Features:

- Direct Formula Entry
- Algebraic Expression Reserve • Playback Key
- 63 Scientific and statistical functions

SHARP



SHARP EL-506H

Advanced Scientific Calculator

It makes quick work of scientific statistical and complicated mathematical problems.

Features:

- Decimal/Hexadecimal Conversion Key
- Direct Formula Entry
- Preprogrammed for 48 Functions



DATACOM SYSTEMS LIMITED

The Authorized SHARP Sales & Service Centre
1567 Grafton Street Halifax, N.S. 425-3394

