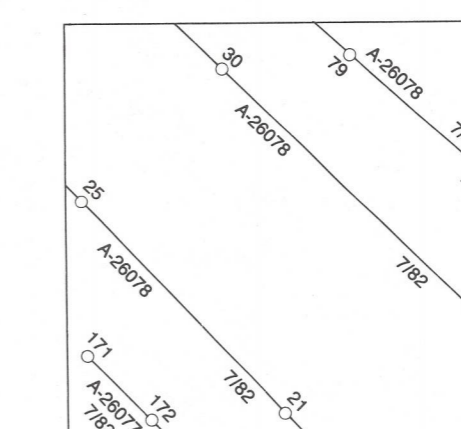


Military users, refer to this map as MAP 48 D/9 & 48 D/16. Références de cette carte pour usage militaire.

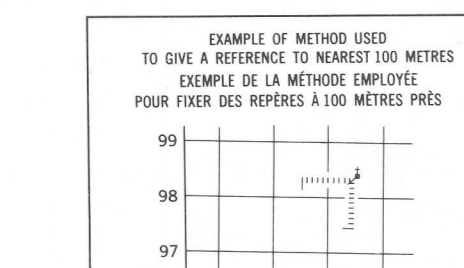
WOLLASTON ISLANDS 48 D/9 & 48 D/16 ÉDITION 1 ÉDITION

LEGEND - LÉGENDE. Table with two columns: English and French descriptions of symbols for roads, bridges, railways, boundaries, and terrain features.

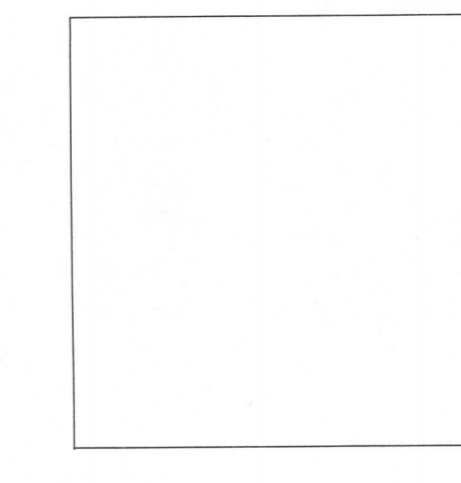
PHOTOGRAPHY PHOTOGRAPHIE



GRID ZONE DESIGNATION 17X. 100 000 m SQUARE IDENTIFICATION NUMBER OF THE GRID.

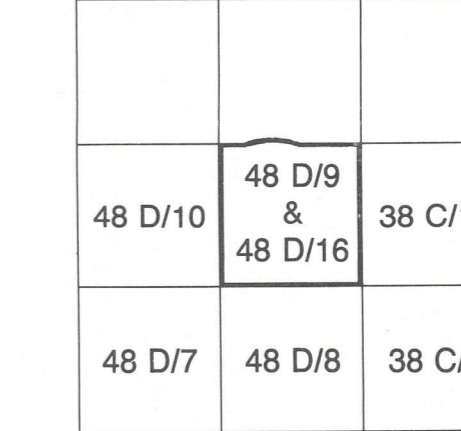


REVISION



REFERENCE POINT CHURCH - ÉGLISE. EASTING: 97. NORTHING: 97.5. GRID REFERENCE: 975084.

ONE THOUSAND METRE UNIVERSAL TRANSVERSE MERCATOR GRID ZONE 17



THE 1983 MAGNETIC BEARING is 69°20' (1217 mil) WEST OF GRID NORTH. ANNUAL CHANGE DECREASING 11.6. GRID NORTH is 0°23' (9 mil) EAST OF TRUE NORTH.

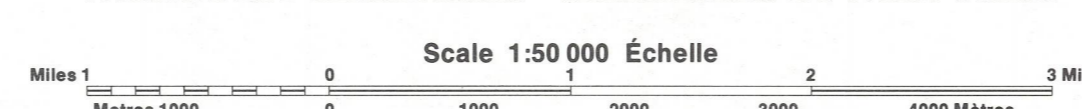
THE MAGNETIC COMPASS IS LIKELY TO BE USELESS IN THIS AREA. LA BOUSOLE SERA PROBABLEMENT INUTILE DANS CETTE RÉGION.



PRODUCED BY THE SURVEYS AND MAPPING BRANCH, DEPARTMENT OF ENERGY, MINES AND RESOURCES, OTTAWA, PUBLISHED IN 1986.

ELEVATIONS IN METRES ABOVE MEAN SEA LEVEL. CONTOUR INTERVAL: 20 METRES. NORTH AMERICAN DATUM 1987.

WOLLASTON ISLANDS DISTRICT OF FRANKLIN. NORTHWEST TERRITORIES TERRITOIRES DU NORD-OUEST.



ALTITUDES EN MÈTRES. ÉCARTILLEMENT DES COURBES: 20 MÈTRES. PROJECTION TRANSVERSE DE MÉRIDIEN.

ÉTABLI PAR LA DIRECTION DES LÈVÉS ET DE LA CARTO. GRAPHE, MINISTÈRE DE L'ÉNERGIE, DES MINES ET DES RESSOURCES, OTTAWA, PUBLIÉ EN 1986.