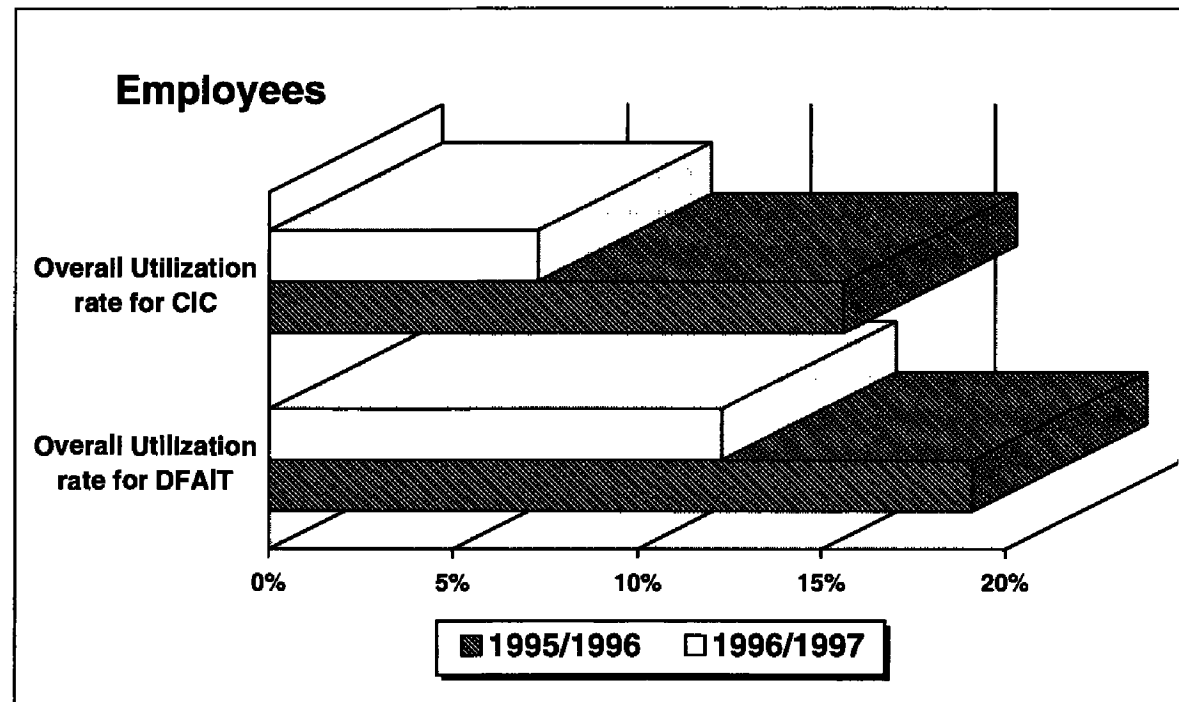


Utilization Rate (continued)

	TOTAL NUMBER OF CLIENTS DFAIT AND CIC	TOTAL EMPLOYEE POPULATION DFAIT AND CIC	OVERALL UTILIZATION RATE DFAIT AND CIC
1995/1996	751	4,025	18.6%
1996/1997	422	3,632	11.6%

	TOTAL NUMBER OF CLIENTS FOR DFAIT	TOTAL NUMBER OF EMPLOYEES FOR DFAIT	OVERALL UTILIZATION RATE FOR DFAIT
1995/1996	668	3,495	19.1%
1996/1997	383	3,102	12.3%

	TOTAL NUMBER OF CLIENTS FOR CIC	TOTAL NUMBER OF EMPLOYEES FOR CIC	OVERALL UTILIZATION RATE FOR CIC
1995/1996	83	530	15.6%
1996/1997	39	530	7.3%



Utilization Rate (continued)

**B. Family Members**

	NUMBER OF CLIENTS AT HQ AND ABROAD	FAMILY MEMBER POPULATION AT HQ AND ABROAD	UTILIZATION RATE
DFAIT	72	1,625	4.4%
CIC	6	397	1.5%
<b>TOTAL</b>	<b>78</b>	<b>2,022</b>	<b>3.9%</b>

**C. Employees and Family Members**

	NUMBER OF CLIENTS AT HQ AND ABROAD	EMPLOYEE AND FAMILY MEMBER POPULATION AT HQ AND ABROAD	UTILIZATION RATE
DFAIT	455	4,727	9.6%
CIC	45	927	4.8%
<b>TOTAL</b>	<b>500</b>	<b>5,654</b>	<b>8.8%</b>

