

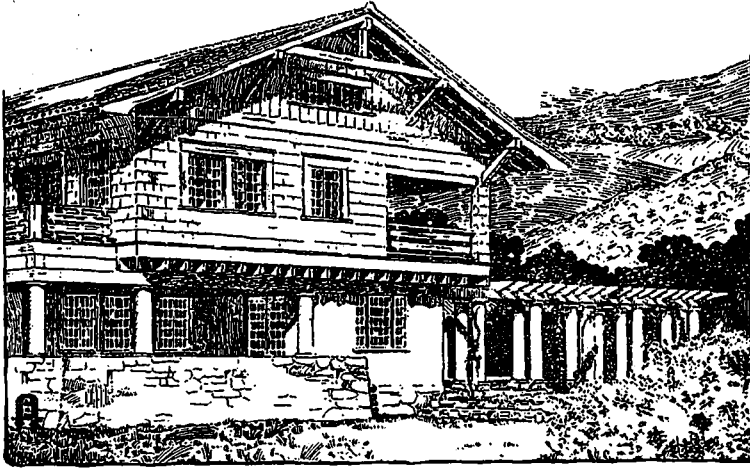
ed rather than stained. As the construction of the house in front is such that a veranda would be rather a disfigurement, a terrace covered with a pergola has been arranged for in its

there is considerable space for storage left over the kitchen and dining room.

The slight projection in the shingled wall that forms a cap over each

and a door communicates directly with the kitchen. This kitchen is fitted not only with a counter-shelf that serves as a work-table, but also with a large cupboard counter-shelf which serves the purpose of storeroom and pantry, so that there is every convenience combined with the greatest economy of space.

On the second story the arrangement is as convenient and economical as it is below. The upper hall that communicates with all three of the bedrooms, bathroom and the storage place under the roof is made small, so that all the space possible may be



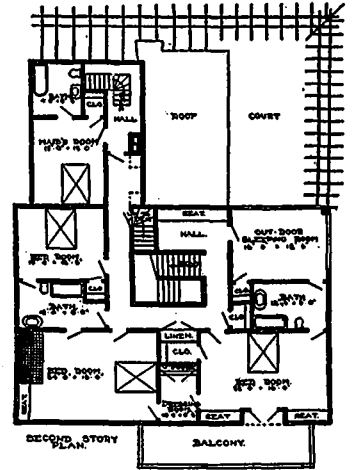
Design No. 5.—Side view of a house especially well adapted for country life, where it is possible to live out of doors for a great portion of the year. The features of this design are the terrace, court, pergolas and porches, in addition to a large outdoor sleeping room.

stead. The terrace, of course, would be of cement or vitrified brick, and the construction of the pergola would naturally be rustic in character, especially in the case of a shingled house. One great advantage of the pergola is that the vines which cover it afford sufficient shade in summer, while in winter there is nothing to interfere with the air and sunlight which should be admitted as freely

window, or group of windows, not only affords protection, but is a very interesting feature of the construction.

The entry opens into the living room very much as it does in the other house, and the arrangement of the stairs is much the same excepting that there is only one staircase for the whole house instead of front and back stairs, as in the other. The big chimney being in the middle of the house, the fireplace in the living room is connected with it on one side and the kitchen range on the other. The fireplace has a bookcase built in on either side, and these bookcases with the two built-in seats form the nucleus of the furnishings.

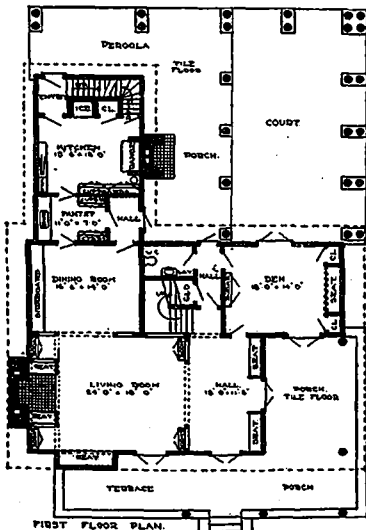
The dining room is separated from



Second floor plan of Design No. 5, showing location of outdoor sleeping room.

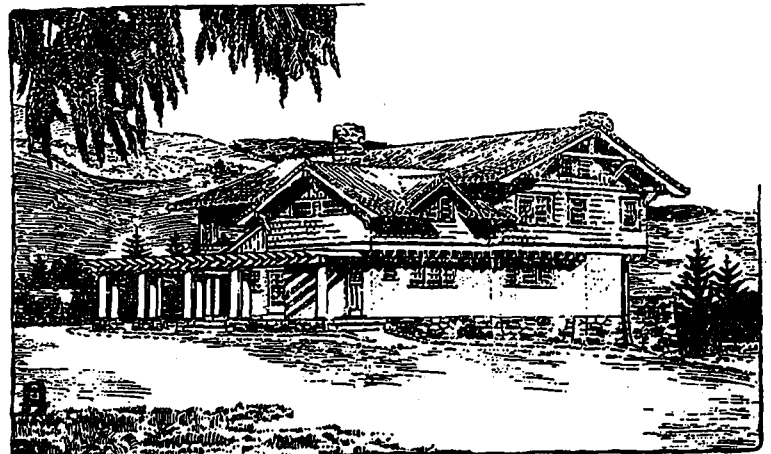
utilized for the rooms. The big sweep of the roof at the back affords a large place for storage, though the walls are not high enough to permit of its being used for any other purpose.

These floor plans are well worth study by anyone who has it in mind to build a farm home, for the arrangement of space is at once con-



First floor plan of Design No. 5, showing the large surfaces allotted to pergolas, porches, terrace and court.

as possible to the house. The roof comes down in an unbroken sweep toward the back because of the beauty and unusualness of this long roof line as compared with the usual square form of a house with the lower roof of a porch or lean-to at the back. Furthermore, by this device



Front view of Design No. 5. This design is suitable for cement or brick, or wood construction, and the roof is equally well adapted to tiles, slates or shingles.

the living room by a door of the usual width. A built-in sideboard is the chief piece of furniture in this room;

venient and economical. There is absolutely not one inch of wasted room in the whole house and it is all