

# THE COMMERCIAL

The recognized authority on all matters pertaining to trade and progress in Western Canada, including that portion of Ontario west of Lake Superior, the Provinces of Manitoba and British Columbia and the Territories.

**Eighteenth Year of Publication**  
ISSUED EVERY SATURDAY

SUBSCRIPTIONS, CANADA AND UNITED STATES  
\$2.00 PER ANNUM IN ADVANCE OR \$3.25 WHEN  
NOT SO PAID; OTHER COUNTRIES, \$3.50 PER  
ANNUM IN ADVANCE.

Changes for advertisements should be in not later  
than Thursday Morning.

Advertisements purporting to be news matter,  
or which profess to express the opinions of this  
journal, will not be inserted.

Office: 151 McDermot Street.

W. W. BUCHANAN,  
Publisher.

The Commercial certainly enjoys a very much larger circulation among the business community of the vast region lying between Lake Superior and the Pacific Coast than any other paper in Canada, daily or weekly. The Commercial also reaches the leading wholesale, commission, manufacturing and financial houses of Eastern Canada.

WINNIPEG, JAN. 13, 1900.

## A Visit to Pembina Branch Towns.

By a Commercial Representative.

The Pembina branch of the Canadian Pacific Railway extends from Winnipeg to Nopinka, a distance of 221 miles, and traverses one of the best and most thickly settled sections of Western Canada. For the first eighty miles the country is very flat, but west of that it is mostly rolling prairie. Between Manitou and Pilot Mound, where the railway crosses the Pembina valley, some very pretty bits of scenery can be had from the car windows, which is a pleasant change from the rather monotonous prairie scenes.

A large number of Germans of the Mennonite faith are settled on the lands adjacent to the towns of Gretna, Altona, Rosenfeld, Plum Coulee, Winkler and Morden. These people came to the country from Russia some twenty or twenty-five years ago with very little money and are now in comfortable circumstances and this district is known as one of the best farmed sections of Manitoba.

The first town on this line of importance is Morris, mention of which was made in a previous issue.

At Rosenfeld, which is the next station, we notice two changes since last year. D. Stewart has built a store adjoining his hardware, and is putting in a stock of furniture, and Wiebe Bros. have sold their general store and are moving to Rosthern, where they have a flour mill. From this point a line runs to the international boundary, where it connects with the Great Northern Railway. The stations on this line are Altona and Gretna.

Altona, although only some four years old, is already an important business point, having five general stores, two lumber yards, implement warehouse and a flour mill. Wiebe & Klassen have started a lumber yard and J. J. Loewen is building a large implement warehouse. The wheat crop in the immediate vicinity of Altona was particularly good this season, averaging over 25 bushels to the acre.

Gretna, which is on the boundary line between Canada and the United

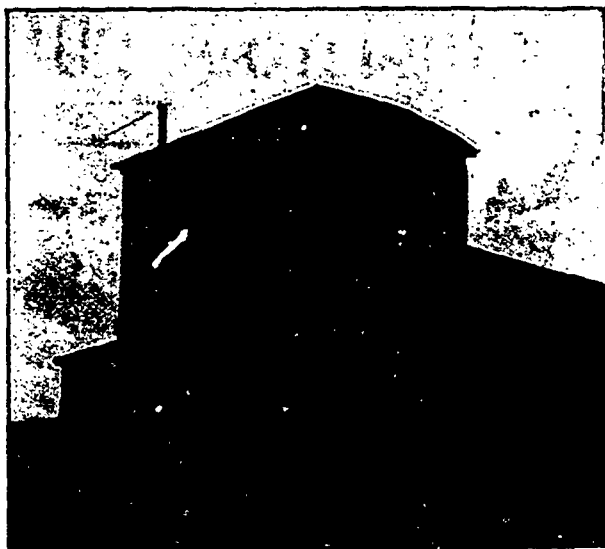
States, is among the oldest towns in this province and is an important business point. It has five general stores owned by Isaac Loewen, John C. Miller, E. Penner & Co. and Schuitz & Stiefel; also four implement warehouses, furniture store, two drug stores, etc., and a branch of the Union bank. J. P. Friesen & Son own a flour mill at this point which has a capacity of 100 bbls per day, also a large lumber yard. Abram Klassen has sold his furniture business to Friesen & Lemky.

Returning to the Pembina branch the first town west of Rosenfeld is Plum Coulee. At this point there are eight general stores, one hardware, two lumber yards, drug store, implement warehouses, a branch of the Bank of Hamilton and a flour mill. The only new business here since our last visit is that of W. and J. Stewart, who have opened a hardware store.

best business towns on this line, and is an important cattle shipping point. La Riviere is in a very pretty spot, being situated in the valley of the Pembina River. There are now two general stores and a hardware here and as the C. P. R. Co. have recently made this a divisional point it is sure to experience considerable growth during the next few years.

At Pilot Mound, P. Wlaram & Co., of Manitou, have established a branch here, having purchased the general store business of Baird & Co., and Wm. Wardman has started a grocery and confectionery business. Dow & Curry have an oatmeal mill here and do a large shipping trade. The oat crop in this district was particularly good this season, the average yield being 60 bushels to the acre.

Crystal City has made marked progress during the last few years, and since our last visit there have been a



W. Peters' Flour Mill at Winkler, Man.

Winkler is the last town in the Mennonite reserve, although Morden gets a considerable amount of this trade. Winkler, although but five years old, has made wonderful progress and it now has five general stores, two hardware, a furniture store, two lumber yards, drug store, a branch of the Bank of Hamilton, etc., also a flour mill, with a capacity of 125 bbls. per day, as well as seven elevators.

Morden ranks fourth in importance among the towns and cities of Manitoba, and is the principal town south of the main line of the Canadian Pacific railway in the province. A large trade is done here and the principal merchants carry heavy stocks of goods. There are about 75 business places at this point. A large trade is done in implements, grain and cattle, the town being the centre of a fine agricultural district. Morden has two chartered banks and a fine hospital.

Thornhill, though a small place is making steady progress. Kilgour & Jordan are the general merchants here.

There have been almost no business changes at Manitou since our last visit. There are at this point five general stores, two hardware, two harness shops, two druggists, two furniture warehouses and two lumber yards, besides a number of other businesses, including several implement warehouses and branches of the Union Bank and Bank of Hamilton. This is one of the

number of business changes. W. H. Davis has started a furniture store, erecting a building for the purpose. J. Pirie built a brick veneer block and Smith Bros. have erected a large brick hotel, which they are fitting up in first class shape. A new public hall building is also among this year's improvements. The principal business change is that in the hardware business formerly owned by R. Rollins, which he has sold to Sparling & Lander. Crystal City is well represented by the different lines of business, the principal dealers being J. G. Steacy and P. A. Young & Co., general merchants, Sparling & Lander, hardware; C. F. Oke, druggist; J. C. Grummett, harness; Jas. Conway, lumber, also a branch of the Union Bank, and a flour mill owned by Greenway Bros.

Hunter & Moore have a branch store at Clearwater, which is the only store at this point. This station is in a very pretty spot for a town, besides being in a good farming locality.

Mather is a new town and has prospects of becoming a good business point. A. Laughlin is the general merchant here.

At Cartwright, Hunter & Moore and W. G. Fenington have general stores, and Phillip & Co., a hardware. In addition to these there are several smaller business places. A considerable increase is noticeable in the amount of grain marketed here this season over