

A great society event came off on Saturday, which was attended by the fashionable and elite of London and Great Britain. This was the marriage of Lady Sarah Isabel Augusta Spencer-Churchill, youngest sister of the Duke of Marlborough and Lord Randolph Churchill, to Lieut. Gordon C. Wilson, son of Sir Samuel Wilson, M. P. for Portsmouth. The ceremony took place in St. George's Church, Hanover Square. The building was crowded to the doors with the wealth and fashion of England. Dresses which had been specially designed for this occasion could be described by no other word than gorgeous. The whole scene was one of splendor and magnificence seldom seen. Lieut. Wilson belongs to the Royal Horse Guards. The Prince of Wales was a conspicuous guest at the ceremony. The Duke of Cambridge, Commander-in-Chief of the forces, was also present at the marriage of his young subordinate. A large number of other military officers, resplendent in gorgeous uniforms, added to the brilliancy of the scene. A pretty feature of the service was the arrangement for making a pathway from the porch of St. George's and down the main aisle to the altar. The troop of the Horse Guards commanded by the bridegroom were drawn up in full uniform, with side-arms, in rows on each side, and through these rows of soldiers the bride and groom smilingly passed after the ceremony was completed. The ceremony was performed by the Archbishop of Canterbury.

A correspondent at Tien Tsen, China, telegraphs that news has arrived of a murderous raid in the north. Well armed bands have devastated a whole district, pillaged and burned the Belgian mission stations at Tayn and Sancti and massacred over one hundred converts to christianity. Troops have been despatched to the scene. The number of European victims is unknown.

### MANY PEOPLE

Have used remedy after remedy for Dyspepsia, getting only a little temporary relief from their disease. The reason "Dyspepticure" actually DOES CURE the worst cases of Chronic Dyspepsia is because it removes the cause of the disease.

### "DYSPEPTICURE"

DIFFERS WHOLLY FROM ALL OTHER REMEDIES.

### JOHN PATTERSON,

Manufacturer of Steam Boilers,  
For Marine and Land Purposes.

### Iron Ships Repaired.

SHIP TANKS, GIRDERS, SMOKE PIPES, and all kinds SHEET IRON WORK.

ESTIMATES given on application.

498 UPPER WATER STREET, Halifax, N. S.

## UNSOLICITED TESTMONIALS

CONSTANTLY BEING RECEIVED IN FAVOR OF THE FAMOUS

## Heintzman's Pianos.

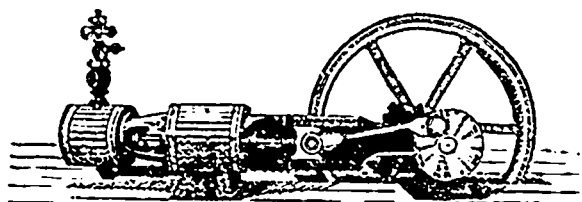
NEW STYLES, IN PLAIN & FANCY WOODS, Constantly Arriving.

PRICES AND TERMS TO SUIT EVERYBODY:

Sole Agents: **HALIFAX PIANO & ORGAN CO.**

157 and 159 HOLLIS STREET.

COMPOUND CONDENSING ENGINE, for Mining, etc.



HOISTING PLANTS,  
GOLD MINING &  
MILL MACHINERY.  
Write for Prices.

**W. W. Howell & Co.**

121 to 123  
LOWER WATER ST.

## The CONFEDERATION LIFE, Toronto.

BUSINESS

IN FORCE:

\$20,000,000.

Assets and Capital

\$4,250,000.

INCOME

\$750,000.

Liberal Rates :-:

:-: Large Profits

SIR W. P. HOWLAND, C.B., K.C.M.G.,

PRESIDENT.

J. K. MACDONALD, Managing Director.

Policies issued upon approved  
lives on all legitimate plans.

Represented everywhere.

F. W. GREEN, Halifax,

MANAGER FOR MARITIME PROVINCES.

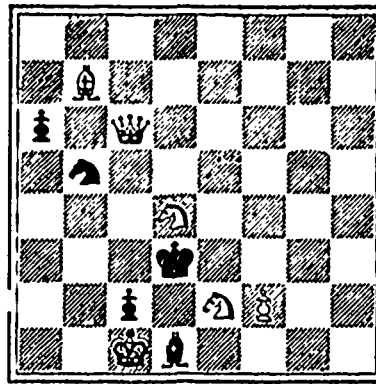
## CHESS.

PROBLEM No. 93.

By W. GLEAVE.

From The Week.

Black.



White.

White to play and mate in two moves.

GAME No. 94.

INTERNATIONAL CORRESPONDENCE  
TOURNEY.

The first game won.

Evans Gambit.

White.

J. W. Showalter,

Georgetown, Ky.

Black.

J. E. Barry,

Fredericton, N.B.

- |                |                  |
|----------------|------------------|
| 1 P to K4      | 1 P to K4:       |
| 2 Kt to KB3    | 2 Kt to Q B3     |
| 3 B to B4      | 3 B to B4        |
| 4 P to Q Kt4   | 4 B x Kt P.      |
| 5 P to B3      | 5 B to R4        |
| 6 Castles      | 6 Kt to B3       |
| 7 P to Q4      | 7 Castles        |
| 8 Kt x P       | 8 Kt x Kt        |
| 9 P x Kt       | 9 Kt x P         |
| 10 Q to Q5     | 10 B x P         |
| 11 Kt x B      | 11 Kt x Kt       |
| 12 Q to B3     | 12 Kt to R5      |
| 13 Q to K Kt3  | 13 K to R sq     |
| 14 B to K Kt5  | 14 Q to K sq     |
| 15 B to B6 (a) | 15 P x B         |
| 16 P x P       | 16 K R to Kt sq  |
| 17 Q R to K sq | 17 Q to Q sq (b) |
| 18 Q to R4     | 18 Kt to B4 (c)  |
| 19 B x P       | 19 Kt to K3      |
| 20 R to K3 (d) | 20 Q to B sq     |
| 21 B x R       | 21 Q x B         |
| 22 P to B4     | 22 P to Kt3      |
| 23 P to B5     | 23 P to Kt2 (e)  |
| 24 R to K Kt3  | 24 Q to B2       |
| 25 P x Kt      | 25 Q x R P (f)   |

Notes by Mr. Showalter.

(a) This variation of the Evans has been so thoroughly analyzed that it is well nigh impossible to find promising lines of play, for either attack or defence, not already laid down in the books. The most approved continuation at this point is 15 R to K sq. The move in the text is of an experimental nature, but the sacrifice, we think, is sound.

(b) Of course, if R takes Q, White mates in five.

(c) The only move, preventing B to Q3, which would have been fatal.

(d) Threatening mate in two by Q takes P ch, etc. Obviously, too, 19 Kt to K3 was forced, as 20 R to K7 would have rendered the attack overwhelming.

(e) If, instead, Kt to Kt4; White wins by 24; Q takes Kt, Q takes Q; 25 R to K8 ch, Q in, 26 P to B7. And if Kt to B sq: 24 Q to R6, B to Kt2; 25 R to K Kt3, Q to B2; 26 R to Kt7, Q to Q4; 27 R takes P ch and 28 Q mates.

(f) And White mates in five moves, beginning 26 P to B7.—*Gazette*.



Children

always

Enjoy It.

## SCOTT'S EMULSION

of pure Cod Liver Oil with Hypophosphites of Lime and Soda is almost as palatable as milk.

A MARVELLOUS FLESH PRODUCER

It is indeed, and the little lads and lassies who take cold easily, may be fortified against a cough that might prove serious, by taking Scott's Emulsion after their meals during the winter season.

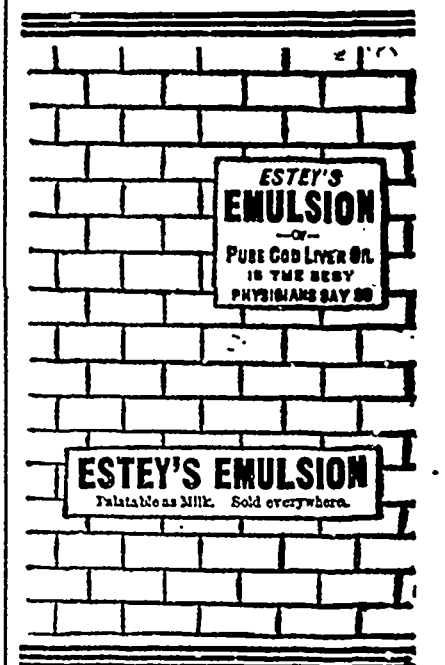
Beware of substitutions and imitations.

SCOTT & BOWNE, Belleville.

## 9 CORDS IN 10 HOURS



Send for free illustrated catalogue, showing testimonials from thousands who have saved from 5 to 9 cords daily. It saws down trees, folds like a pocket knife, weighs only 41 lbs., easily carried on shoulder. One man can saw two times as fast with it as two men with a cross-cut saw. It is used by the U.S. Army and Navy. We also make larger sized machine to carry 1 foot saw. No duty to pay, no manufacture in Canada. Write order enclosing 10c. to J. H. SAWING MACHINE CO., 309 to 311 So. Canal St., Chicago, Ill.



Army and Navy Depot, Granville St  
HALIFAX, N. S.

FULL STOCK GROCERIES, viz.:

SUGAR, Cut Loaf, Granulated, Pulverized

Porto Rico.

TEAS and COFFEE, best value in the city

CHEESE, English and Canadian Stilton.

FLOUR, best Pastry and Superior.

OUTMEAL and CORNMEAL.

BUTTER and LARD (in 10, 5 and 3 lb tins).

MOLASSES, Diamond N., Golden Syrup.

PICKLES, Assorted; Lazenby and Crosse

and Blackwell.

SAUCES, Worcester, Harvey, Nabob, etc.

JAMS and JELLIES, Crosse & Blackwell,

Koiler and Morton.

FRENCH PEAS, MUSHROOMS,

CAPERS, etc.

TRUFFLES, CAPERS and OLIVES.

SOUPS, in tins. Huckle's American

CANNED and POTTED MEATS.

CONDENSED MILK, Swiss and Truro.

BISCUIT, English, American & Canadian.

BENT'S WATER CRACKERS and

WAFERS.

RAISINS, CURRANTS, FIGS, DATES,

ORANGES.

TOBACCO and CIGARS, Havana.

**JAS. SCOTT & CO.**