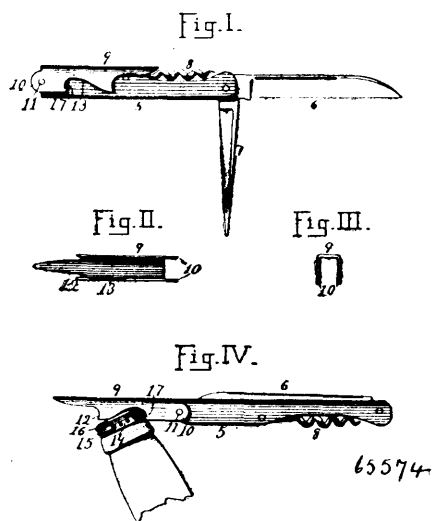


threads on the lower end of each frame section, substantially as described. 6th. The combination with the T shaped plate having perforations, inflated sack provided with the inflating tube, the brace frame and outer clamping plates, said T shaped plate adapted to engage said inflating tube, whereby the latter is held in position on the collar, all substantially as described. 7th. In a horse collar, the combination with the inflated pad, casing, frame and clamping stripes, of the hinged plate having the enlargement to engage the upper end of each section of said frame, substantially as described. 8th. In a horse collar, the combination with the casing, brace frame, securing plates and inflated sack, of the filling composed of soft material arranged within the sack and adapted to serve the purpose of a pad when the sack is not inflated, substantially as described. 9th. In a pneumatic horse collar, a partial stuffing for the inflated sack interposed between the rear portion of the casing thereof and the pressure frame at the front of the collar, substantially as described. 10th. In a pneumatic horse collar, the loose filling arranged within the inflated sack thereof and interior of the casing and interposed between the shoulder portion of the sack and casing and the pressure frame or frames, substantially as described.

#### No. 65,574. Bottle Stopper Extractor.

(Extracteur de bouchon de bouteille.)



Bertin Toulotte, New York City, New York, U.S.A., 28th December, 1899; 6 years. (Filed 25th November, 1899.)

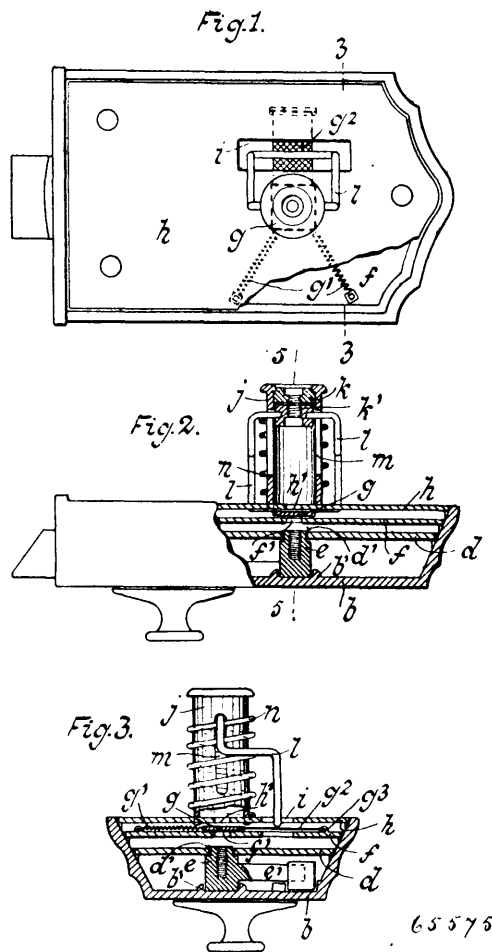
**Claim.**—In stopper extractors, a pocket knife handle, a blade in the shape of a trough whose sides terminate in ears adapted to straddle the handle and to be pivoted thereto, the said sides being adapted to pinch upon the handle when the blade is closed, and each side being shaped with a notch and a hook, substantially as described.

#### No. 65,575. Safety Lock. (Serrure de sûreté.)

Theodore Brand, Brooklyn, and Max Fehrmann, New York City, New York, U.S.A., 29th December, 1899; 6 years. (Filed 31st December, 1898.)

**Claim.**—1st. A safety attachment to a lock, comprising a plug set turnably in the lock and having an arm adapted to operate the bolt, a slide covering the aperture for the passage of the key into the lock, springs holding the slide in its normal position and returning it thereto automatically, a plate set above the slide and provided with an aperture for the passage of the key in corresponding position, a tubular keyway secured to this plate, a stationary block provided with a screw threaded hole and secured in the mouth of the keyway, a sliding block or blocks provided with screw threaded apertures for the passage of the key, set in the keyway between the stationary block and the plate, a spiral spring supporting this block or blocks in normal position, and means for moving the slide from its normal position by pushing the sliding block downward. 2nd. The combination with a lock, provided with a plug set turnably in the lock and having an arm adapted to operate the bolt, a slide covering the aperture for the passage of the key into the lock, springs holding the slide in its normal position and returning it thereto automatically, a plate set above the slide and provided with an aperture for the passage of the key in corresponding position, a tubular keyway secured to this plate, a stationary block provided with a screw threaded hole and secured in the mouth of the keyway, a sliding block or blocks provided with screw threaded aper-

tures for the passage of the key, set in the keyway between the stationary block and the plate, a spiral spring supporting this block



or blocks in normal position, and means for moving the slide from its normal position by pushing the sliding block downward, of a key provided with screw threads of different sizes, pitch and grade, corresponding with the size, pitch and grade of the screw threads provided in the blocks and in the plug set in the lock.

#### No. 65,576. Traction Engine. (Machine de traction.)

The Vanduzen Gasoline Engine Company, Cincinnati, assignee of Benjamin Cadwell Vanduzen, Winton Place, all in Ohio, U.S.A., 29th December, 1899; 6 years. (Filed 30th June, 1899.)

**Claim.**—1st. In a traction engine, having chains for guiding the front axle, the drum  $E^{16}$  for operating the chains, supported in a bracket  $E^{17}$  partially embracing the reaches and being connected to a superincumbent jaw, substantially as and for the purposes specified. 2nd. In a traction engine, having chains for guiding the front axle, the drum  $E^{16}$  for operating the chains, supported in a bracket  $E^{17}$  partially embracing the reaches, and being connected to a superincumbent jaw, and tie rods  $E^{18}$  connecting the bracket  $E^{17}$  to the rear axle saddle  $B^4$ , substantially as and for the purposes specified. 3rd. In a traction engine, having chains for guiding the front axle, the drum  $E^{16}$  for operating the chains, supported in a bracket  $E^{17}$  partially embracing the reaches and being connected to a superincumbent jaw, provided with worm wheel  $E^{20}$ , and also carrying the journal bearings  $E^{24}$ ,  $E^{24}$ , worm  $E^{21}$ , on the shaft  $E^{22}$ , journaled in the bearings  $E^{24}$  and  $E^{22}$ , substantially as and for the purposes specified. 4th. In a traction engine, having chains for guiding the front axle, the drum  $E^{16}$  for operating the chains, supported in a bracket  $E^{17}$ , partially embracing the reaches, and being connected to a superincumbent jaw, and the bracket  $B^{32}$  clamped to the reaches and carrying and pivotally holding one end of the oscillating reaches  $B^{29}$ , and front axle to which are attached the chains  $E^{12}$ , and the king-bolt holding the forward end of the oscillating reach, substantially as and for the purposes specified. 5th. In a traction engine, the rear axle and the saddle  $B^4$  provided with the vertical flange  $B^6$  arranged to lie against one side of the axle, and the vertical bolts  $B^6$  and the eyebolts  $B^7$  respectively embracing the other side of the axle and the bottom thereof, substan-