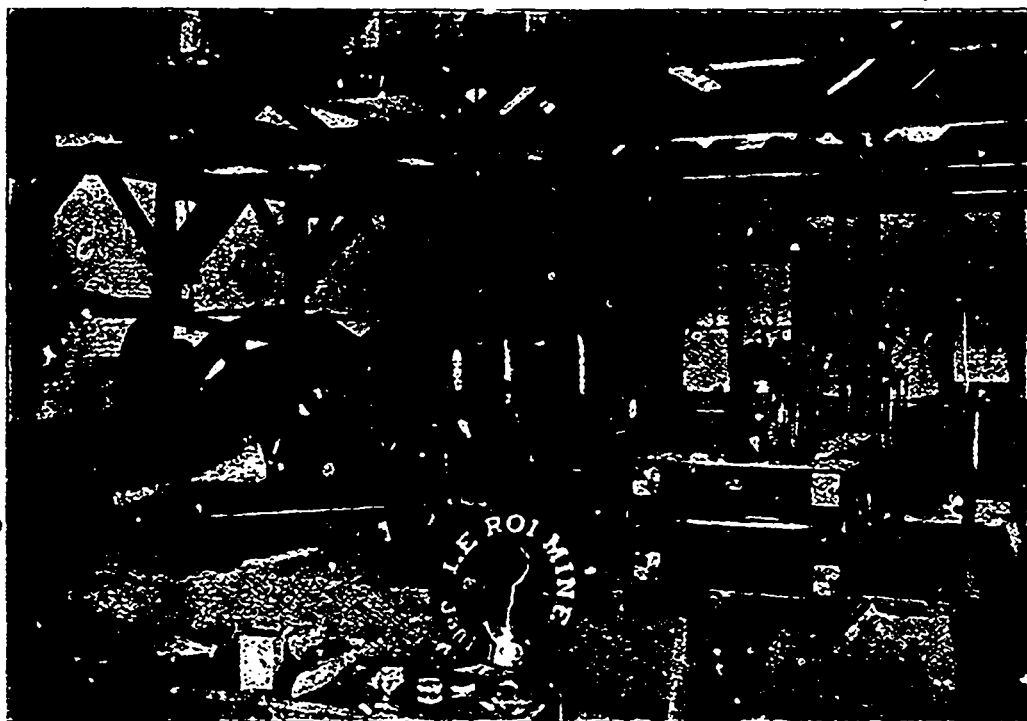
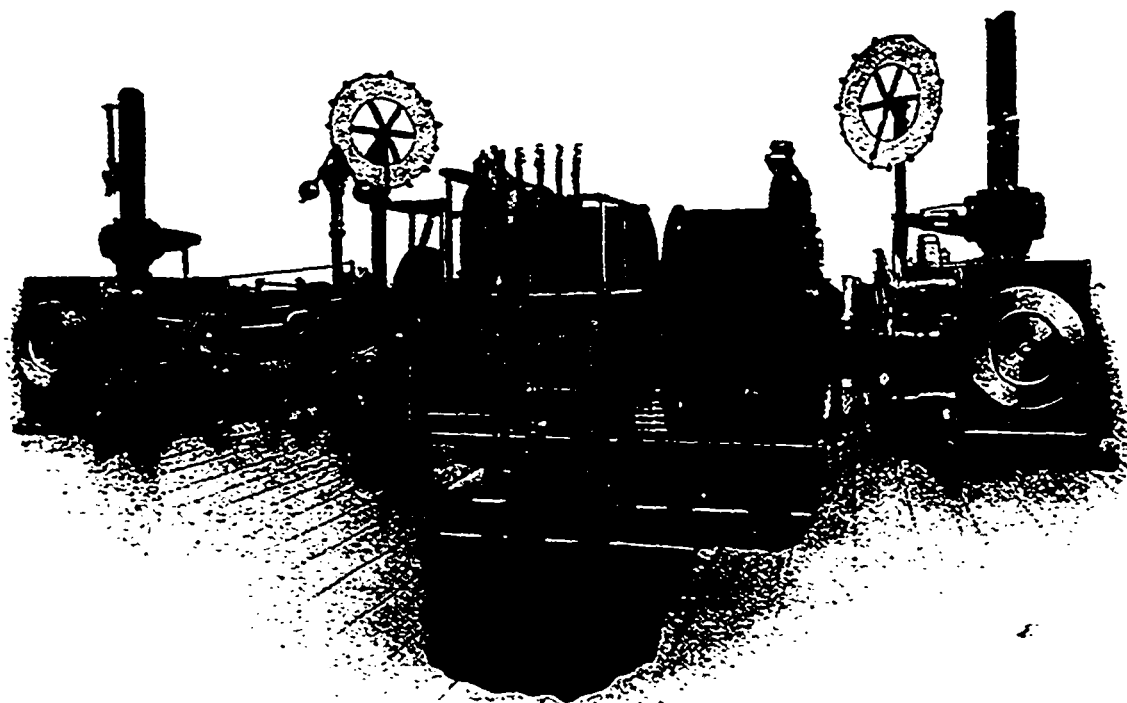


## HOISTING AND HAULAGE PLANT AT THE LEROI MINE, ROSSLAND, B.C.



LeRoi Winding Engine in course of installation.



*Description of Hoisting Engine built for the LeRoi Mining Company.*—This engine embodies the latest principles in hoisting engine construction, and consists of two 24-inch by 60-inch Corliss Engines with two drums 10 feet diameter by 5 feet face mounted directly on the crank shaft. Each drum is equipped with a powerful land friction clutch and a powerful post brake operated by steam. The engine is provided with special valve gear for hoisting engine work, and is controlled by link reversing gear operated by an auxiliary engine. It is furnished with all devices for proper handling and safety. Maximum capacity 14,500 lbs. unbalanced load raised at 2,000 ft. per minute with 100 lbs. steam pressure.