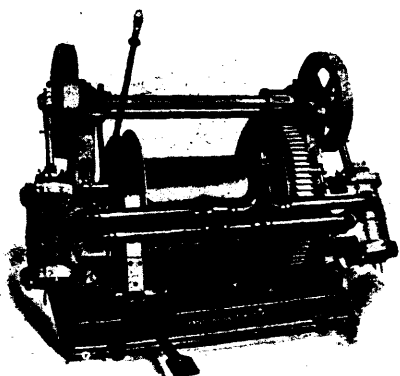
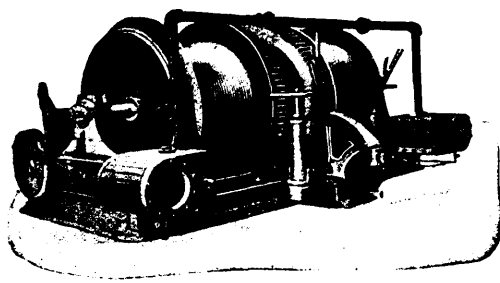


GENERAL MINING MACHINERY.

HOISTING
CRUSHING
AND
Mining
Machinery.



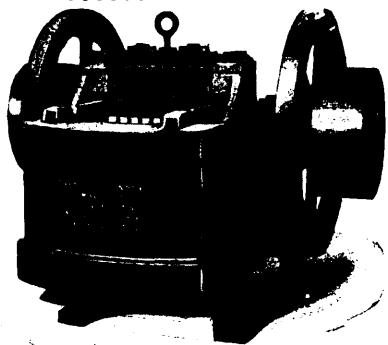
BACON'S Under-Ground Winze Hoist.



BACON'S Double Drum Winding Engines.

Earle C. Bacon, Engineer

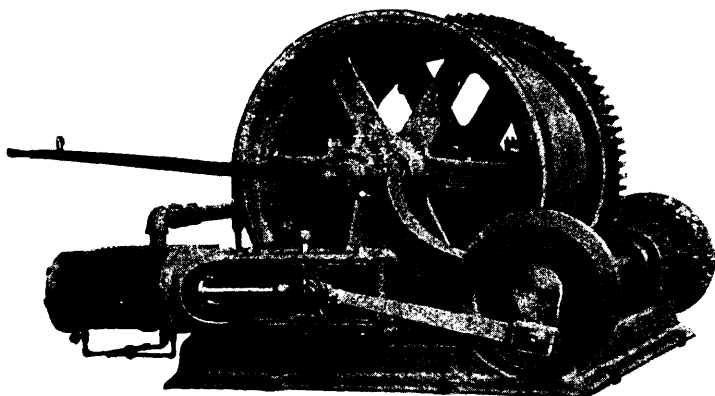
Havemeyer Building, NEW YORK.



Farrel Ore and Rock Crusher. Standard of the World.

- Mine Cars.
- Ore Skips.
- Engines.
- Boilers.
- Gravity Incline Machinery

Send for Completely Illustrated Catalogues.



BACON'S

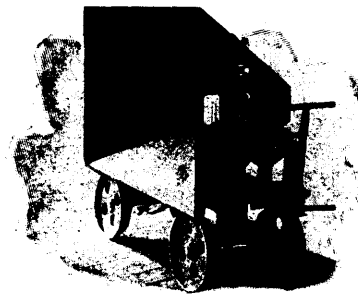
DOUBLE CYLINDER Single Drum Winding Engines for Mine Shafts, Slopes, etc.



Conveyor 328 feet centers, handling 4 tons "run of mine" coal per minute.

Link-Belt

ELEVATORS
AND
CONVEYORS.



Steel Coal or Ash Cars.

ANY MATERIAL.
ANY CAPACITY.

Electric Coal Mining and Haulage Machinery,
Link-Belting, Sprocket Wheels, Malleable Iron Buckets,
Shafting, Pulleys, Gearing, Clutches,
Patent Machine-Moulded Rope Sheaves, etc.

THE LINK-BELT MACHINERY CO., Engineers, Founders, Machinists, Chicago, U.S.A.

WM. R. PERRIN & CO., CHICAGO, ILL., U.S.A.

MANUFACTURERS

Filter Presses

For Cyanide
and
Chloromatic Plants.

WRITE FOR CATALOGUE.

