

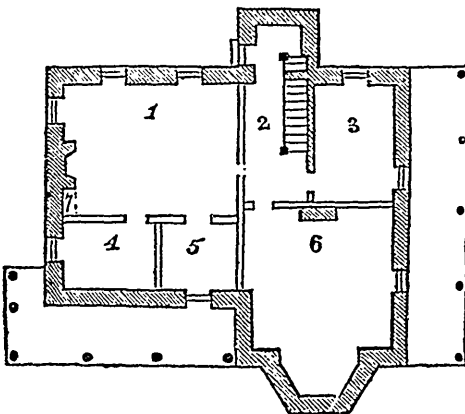
ment admits of so many modifications, that it is well to look about one before deciding on any particular plan.

The following design has been much admired. It is that of a cottage in the Italian style of architecture, and is well adapted for a farmer on a small scale, or for a village residence. We lately gave the design of a Farm House suitable for a large family. This will be found adapted to a different class of our readers.

"There is nothing" says Downing "that more powerfully affects the taste and habits of a family—especially the younger members of it—than the house in which it lives. An uncouth, squalid habitation is little likely to awaken that attachment to home, that love of good order, and that sense of propriety and elegance in social deportment which are so much developed by that home where a certain proportion, a certain fitness, and a sense of beauty are every where visible."

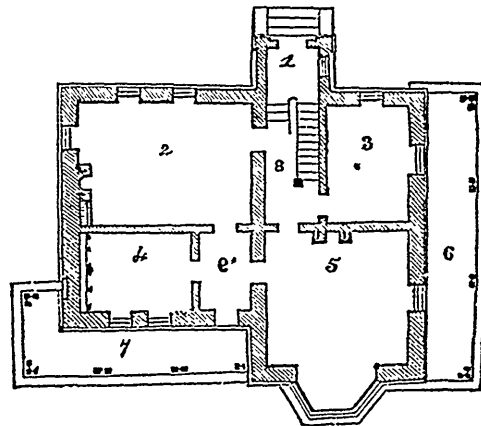


AN ITALIAN COTTAGE.



CELLAR APARTMENTS.

1. Kitchen,
2. Dining Room,
3. Bedroom,
4. Pantry,
5. Furnace or Store Room,
6. Cellar



GROUND PLAN.

1. Entry,
2. Dining Room,
3. Nursery,
4. Library,
5. Parlour,
6. 7. Verandah,
8. Hall.