

PASSENGER TRAFFIC. TAKE THE OLD RELIABLE

CUNARD LINE FOR EUROPE

W.A. GEDDES, AGENT, 69 YONGE-STREET, TORONTO. BARLOW CUMBERLAND General Steamship and Railroad Agency for the principal TRANS-ATLANTIC LINES, TRANS-PACIFIC LINES, FOREIGN LINES, LOCAL LINES AND ALL SOUTHERN LINES 72 YONGE-ST. - TORONTO

INMAN LINE U.S. and ROYAL MAIL Steamship Co. of New York, City of New York, City of Chicago. These new luxurious steamers are among the largest and fastest in the Trans-Atlantic service.

Muskoka and Georgian Bay Navigation Co'y. The steamer NEPHEW will continue her daily trips to Lake St. Joseph until and including Saturday, Sept. 27th.

MAJESTIC and TETONIC have accommodations of a massive high character for second class passengers. There is a large handsome dining saloon on the upper deck, billiard room, smoking-room, and a spacious promenade deck.

General Canadian Agent, 69 Yonge-st., Toronto. T. W. JONES. The new, magnificent steamers MAJESTIC and TETONIC have accommodations of a massive high character for second class passengers.

CANADIAN PACIFIC STEAMSHIP LINE One of the Electric-Lighted Express Steamships MANITOBA, ALBERTA AND ATHABASCA

Intended to leave OWEN SOUND every MONDAY, THURSDAY AND SATURDAY on arrival of the regular morning Express leaving Toronto at 7:30 a.m.

PEOPLES POPULAR ONE WAY ARTIES TO THE PACIFIC BY THE COINC WEDNESDAY Oct. 15 Nov. 4-18 Dec. 2-16-30

INTERCOLONIAL RAILWAY OF CANADA The direct route between the west and all points on the Lower St. Lawrence and the Gulf of St. Lawrence.

W. BAKER & CO.'S Breakfast Cocoa from which the excess of oil has been removed, is Absolutely Pure and it is Soluble.

No Chemicals are used in its preparation. It has more than three times the strength of Cocoa mixed with Starch, Arrowroot or Sugar.

W. BAKER & CO., Dorchester, Mass. THE PULSON IRON WORKS CO. of Toronto, Limited MANUFACTURERS OF BROWN AUTOMATIC ENGINES

Stationary and Marine Boilers Steam Pumps, Windlasses, etc. Engines and Boiler Works - Espanade east. To rent. Shipbuilding Works and Dry Dock - Owen Sound, Ont.

W. H. STONE, UNDERTAKER 349-YONGE-STREET-349 OPP. E.L.M. Telephone 932.

PASSENGER TRAFFIC. TAKE THE OLD RELIABLE

CUNARD LINE IS THE BEST FOR EUROPE

A. F. WEBSTER 58 YONGE-STREET. GRAND TRUNK RY. Allan Line of Ocean Steamships, White Star and Dominion Lines. TICKET OFFICE 20 YORK-ST. Tickets to all points in Canada, United States and Europe at lowest rates.

P. J. SLATTER, City Passenger Agent. Telephone 435. WEST INDIES. BERMUDA 60 hours from New York, THURSDAYS

On and After MONDAY, Sept. 21st. DAILY TRIPS TO ST. CATHARINES. This fast and staunch steamer will leave Millroy's Wharf, foot of Yonge-street, at 8:30 a.m. daily for St. Catharines and Port Hope.

DOMINION LINE ROYAL MAIL STEAMERS LIVERPOOL SERVICE From Montreal, From Quebec. SS. Toronto, Wed. daylight, Oct. 29

SOUTHERN STEAMSHIP LINES SUNNY CLIMES Agency Cook's Tours. For full information, tickets, etc., apply to BARLOW CUMBERLAND.

ALLAN LINE Liberal Mail Steamships. Liverpool (not calling at Moville). Reduction in Cabin Rates.

STATE LINE SERVICE OF ALLAN LINE BETWEEN NEW YORK AND GLASGOW via Londonderry.

ALLAN LINE, Dominion Line, Beaver Line. 2010 Ancher Line, Royal Netherlands and Hamburg, Am. P&N Co.

GOLD MEDAL, PARIS, 1875. W. BAKER & CO.'S Breakfast Cocoa

No Chemicals are used in its preparation. It has more than three times the strength of Cocoa mixed with Starch, Arrowroot or Sugar.

W. BAKER & CO., Dorchester, Mass. THE PULSON IRON WORKS CO. of Toronto, Limited

Stationary and Marine Boilers Steam Pumps, Windlasses, etc. Engines and Boiler Works - Espanade east. To rent. Shipbuilding Works and Dry Dock - Owen Sound, Ont.

W. H. STONE, UNDERTAKER 349-YONGE-STREET-349 OPP. E.L.M. Telephone 932.

W. H. STONE, UNDERTAKER 349-YONGE-STREET-349 OPP. E.L.M. Telephone 932.

TO RENT BOYS' CLOTHING

BOYS' FANCY SAILOR SUITS Latest Style, from \$1 upwards. BOYS' SERGE & TWEED SUITS Jaunty Looking, Well-Made and Low Priced, from \$2.50 up. BOYS' THREE-PIECE SCOTCH TWEED SUITS With Knickerbockers or Trousers, from \$5 to \$7.50 and upwards.



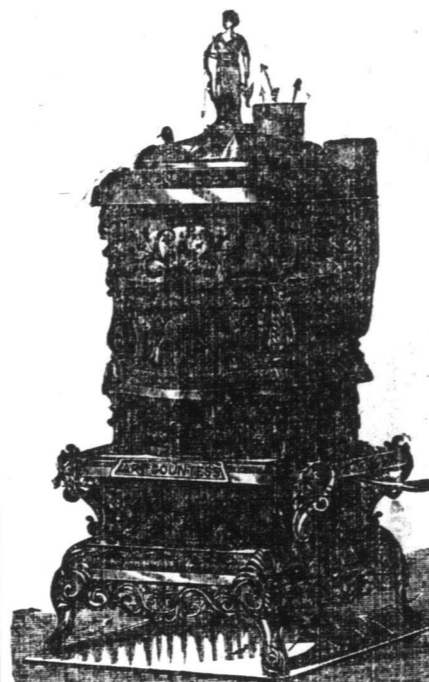
These Suits are Splendidly Made from the best Scotch Tweeds and Tweeds, and no better value can possibly be found. YOUTHS' TWEED SUITS With Long Trousers, Elegantly Made, from \$6 to \$9, equal to \$12 Suits made to order.

REEFER JACKETS AND SHORT OVERCOATS Just what the Boys Want. Everything Modern. Well Lighted. APPLY EARLY. This will be the best business stand in Toronto.

R. WALKER & SONS

33, 35 & 37 King-st. E.; 18, 20 & 22 Colborne-st. ART COUNTERESS BASE BURNER WITH AND WITHOUT OVEN. OVER 10,000 NOW IN USE.

THE MOST BEAUTIFUL and Perfect Heater ever manufactured. Every Stove a Double Heater. The air is drawn from the floor up through four circulating chambers and thrown out at the top of stove. Can be carried to any other room by attaching pipe to collar.



THE E. & C. GURNEY CO. TORONTO. HAMILTON. MONTREAL. TO HAND THIS WEEK NOVELTIES IN Veilings, Frillings and Ruchings CORRECT STYLES. CLOSE PRICES.

SAMSON, KENNEDY & CO 44 Scott and 19 Colborne-sts., Toronto. KANADA KOAL KOMPANY SCRANTON KOAL Steam and Domestic Coal

H. J. WATSON - Manager. WE SELL NOTHING BUT THE BEST COME AND PLACE YOUR ORDER. THE C. J. SMITH CO., LIMITED IMPORTERS OF COAL AND WOOD.

NOEL MARSHALL, MANAGER. F. H. THOMPSON, Importer and Dealer in the Best Grades of COAL & WOOD

PRESENT PRICES. Stove and Nut Coal per ton - \$5.50 Best Cut and Split Hard Wood, per cord \$6.00

W. H. STONE, UNDERTAKER 349-YONGE-STREET-349 OPP. E.L.M. Telephone 932.

DRINK "EUCO" WATER Sold by all Liquor Dealers Official: 311 Yonge-street.

WYLD, GRASSETT & DARLING.

BLANKETS AND FLANNELS Repeat orders for our leading lines are coming in so freely that we ask all our friends who are likely to re-order to kindly do so within the next two weeks if they desire to secure the same goods.



WYLD, GRASSETT & DARLING. The Canada Sugar Refining Co. LIMITED. MONTREAL. Offer for sale all grades of Refined Sugars and Syrups of the Well-known Brand of

Redpath CERTIFICATES OF STRENGTH AND PURITY. OFFICE OF THE PUBLIC ANALYST. MONTREAL, Sept. 26, 1887.

LABATT'S LONDON ALE AND STOUT AWARDED Gold Medal at International Exhibition JAMAICA, 1891.

Only Gold Medal Awarded for Ale to Canadian or United States Exhibitors. JOHN LABATT, LONDON, CANADA. JAMES GOOD & CO., AGENTS, Toronto

BEST QUALITY COAL AND WOOD OFFICES: 20 King-st west 409 Yonge-st 793 Yonge-st 238 Queen-st east 578 Queen-st west 1352 Queen-st west 419 Spadina-ave

Yard Esplanade E. Near Berkeley-street. Yard Esplanade E. Foot of Church-street. Yard Bathurst-st. Opposite Front-street

ELIAS ROGERS & CO THE BEST IS THE CHEAPEST We also furnish only the best grades of soft coal for grate use.

Ontario Coal Company LEHIGH VALLEY COAL Positively the Very Best in the Market.

WE SELL NOTHING BUT THE BEST COME AND PLACE YOUR ORDER. THE C. J. SMITH CO., LIMITED IMPORTERS OF COAL AND WOOD.

NOEL MARSHALL, MANAGER. F. H. THOMPSON, Importer and Dealer in the Best Grades of COAL & WOOD

PRESENT PRICES. Stove and Nut Coal per ton - \$5.50 Best Cut and Split Hard Wood, per cord \$6.00

W. H. STONE, UNDERTAKER 349-YONGE-STREET-349 OPP. E.L.M. Telephone 932.

DRINK "EUCO" WATER Sold by all Liquor Dealers Official: 311 Yonge-street.

WILLIAMS PIANOS

Endorsed by the best authorities in the world. R. S. Williams & Son, 143 Yonge-street, Toronto.



CHARGES BROWN & CO. The Stable Supply House of Canada. 6 ADELAIDE-ST. EAST, TORONTO, ONT.

DEMOCRAT WAGONS OF EVERY DESCRIPTION. All kinds of Popular Vehicles at Popular Prices. MASSEY-HARRIS



Several lines of our vehicles we are now selling at a great sacrifice. While all of the latest style rigs are marked down to very low figures.

GANANOQUE CARRIAGE CO. 100 & 102 BAY STREET, TORONTO. Parties wanting a Carriage of any description would do well to give us a call.



TO RENT Splendid Business Office on Melinda-street. No. 14 in World Building Large window, vault and steam heating. No water rates or taxes. Moderate rent.

TORONTO POSTAL GUIDE-DURING THE month of October, 1891, mails close and are due as follows:

Table with columns for destination (G.P.R. East, G.P.R. West, etc.), close time, and day.

English mails will close at 4 and 9 p.m. each day, excepting Fridays when it will close at 10 p.m.

THE BREAD IS OUR TOAST FOR WASHMITHS PAN