

BUSINESS NOTES.

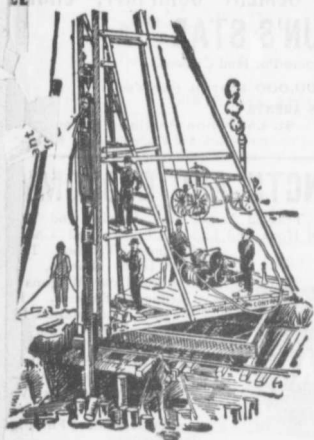
It is estimated that the value of new buildings erected in Guelph, Ont., this year will reach \$450,000.

McBride & Farcombe, architects and surveyors, London, Ont., have removed their offices from the Duffield Block to the Bank of Toronto building in that city.

The Raven Lake Portland Cement Company, Limited, whose works at

Raven Lake, on the Coboconk branch of the Grand Trunk Railway, are now nearing completion, appear to have an excellent combination of good features, among them being a large water power to drive their machinery, effecting a great saving over the cost of steam power. Their transportation is most convenient, as the buildings stand immediately beside and between the railway track and the

marl lake. The marl is brought into the factory by pneumatic conveyances. There will be a minimum amount of handling of material, and we understand that the machinery is the latest and best that money can buy and is all on the spot now. The buildings are constructed of concrete, stone and iron, and are complete in all respects. K. F. Wentz has charge of the engineering of the plant. Thomas McLaughlin, 16 King street west, Toronto, has financed the company.

**PILE DRIVING**

on land or water by Steam Pile Drivers or Drop Hammers.

**Portable Boilers
Hoisting Engines
Pumping Machinery**

TO LET

Bridge Building, Trestle Work, Wharves, Dams, Diving Submarine Work and General Contracting.

WM. HOOD & SON

10 Richmond Sq. - MONTREAL

DEBENTURES

Municipalities contemplating the issue of Debentures will find it to their advantage to communicate with

G. A. STIMSON & CO.

Investment Dealers
24 and 26 King St. W. - TORONTO

**THE DELANO-OSBORN
ENGINEERING CO., LIMITED**

MANNING CHAMBERS, TORONTO

CONSULTING CIVIL, MECHANICAL AND
ELECTRICAL ENGINEERS.

ALWAYS IN STOCK

PIG LEAD, PIG TIN AND SOLDER

Syracuse Smelting Works, Montreal, P.Q.

Notice to Contractors.

*The Niagara Falls Machine &
Foundry Co., Limited,
Niagara Falls, Ont.,*

are making a specialty of Improved
HOISTING AND BUILDING ENGINES.
Write for Prices.

**Pittsburgh Testing Laboratory,
LIMITED**

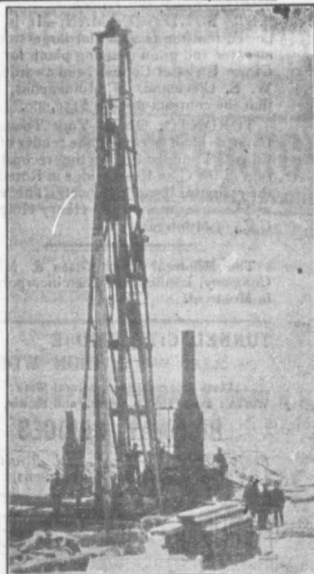
Inspecting and Metallurgical
Engineers and Chemists

SPECIALTIES: Inspection of RAILS and all
material for BRIDGES, BUILDINGS, and
other structures, cast iron pipe, wood
and steel railroad cars.

MANUFACTURE AND ERECTION.

Expert examination and reports, chemical
analyses and physical tests of all kinds.
Cement Testing.

140 St. James Street, - Montreal, P.Q.

**PILE DRIVING**

and Foundation Work.

By 5-ton Automatic Steam Pile Hammer,
Water Jet or Drop Hammers, Dock Building,
Submarine Work and Dredging.

BUILDING MOVER AND WRECKER

General Contracting.

JNO. E. RUSSELL, - Toronto
908 Queen St. E. - Phone M. 2007.

Pumps for Waterworks

**Waterworks Systems
Installed**

*Steam, Hydraulic, Electric,
Gasoline, Air Lift and
Automatic Rams.*

**Steam Boilers and
Filters**

Write for Prices and Particulars

The John McDougall

CALEDONIAN IRON WORKS CO., LIMITED

MONTREAL, P.Q.

