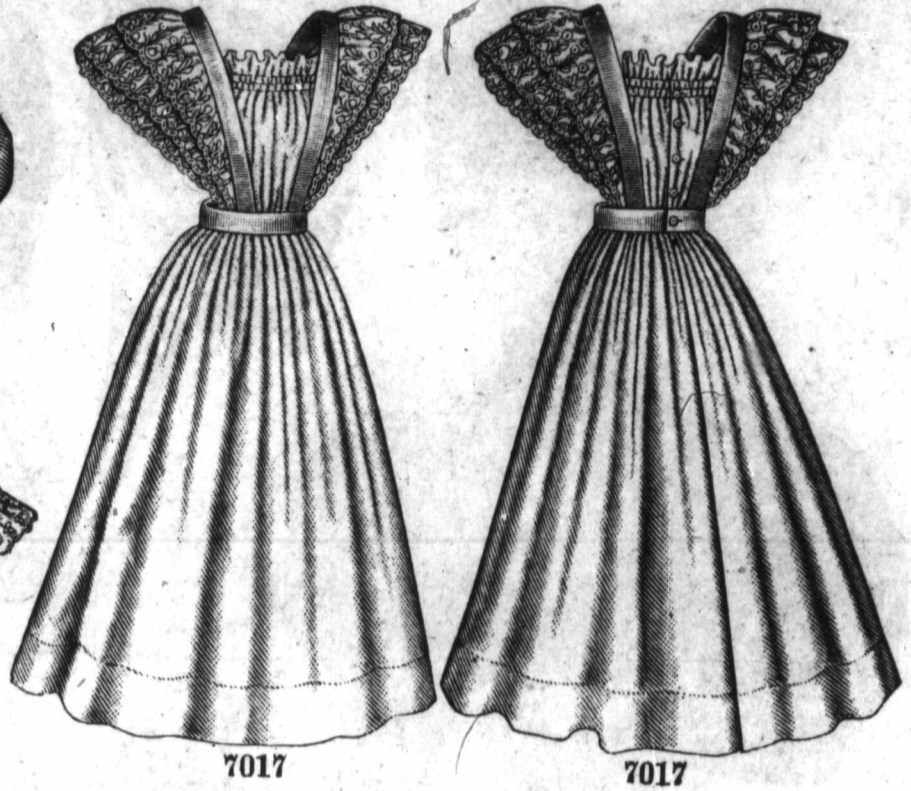




LADIES' DRESSING-SACK. (TO BE MADE WITH A ROLLING OR A SAILOR COLLAR.) (COPYRIGHT.)
 No. 7022.—The pattern of the comfortably fashioned garment here portrayed is in 13 sizes for ladies from 28 to 46 inches, bust measure. To make the sack of one material for a lady of medium size, will require 5 3/8 yards of goods 22 inches wide, or 4 1/4 yards 30 inches wide, or 3 1/2 yards 44 inches wide. Price of pattern, 25 cts.



MISSES' APRON. (COPYRIGHT.)
 No. 7017.—A pretty garment is here represented developed in white lawn and embroidered edging. The pattern is in 9 sizes for misses from 8 to 16 years old. To make the apron for a miss of 12 years, requires 2 1/4 yards of nainsook 36 inches wide, with 4 1/4 yards of embroidered edging 5 1/4 inches wide. Of one material, it needs 4 1/4 yards 22 inches wide, or 2 3/8 yards 36 inches wide. Price of pattern, 20 cts.



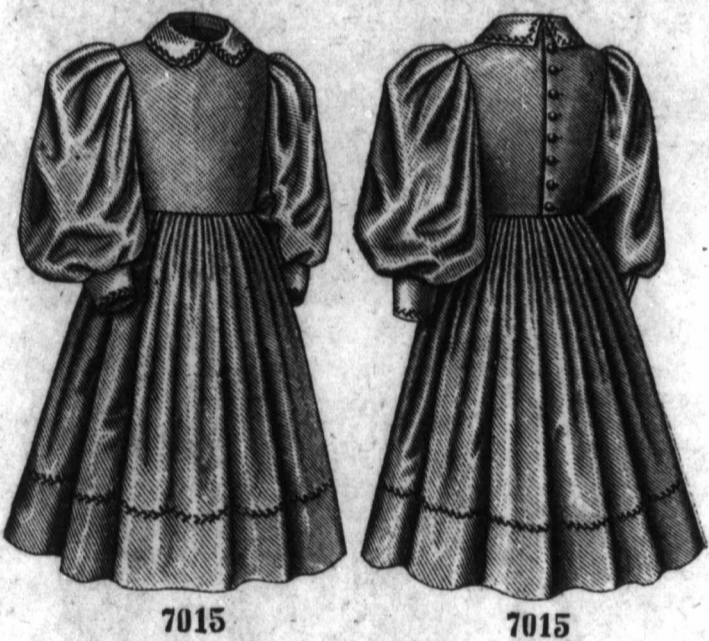
LADIES' TIGHT-FITTING COAT, WITH ETON FRONT. (COPYRIGHT.)
 No. 7016.—This pattern is in 13 sizes for ladies from 28 to 46 inches, bust measure. To make the garment for a lady of medium size, will require 2 3/4 yards of cloth 54 inches wide, with 2 3/8 yards of moiré 20 inches wide. Of one material, it calls for 8 1/2 yards 22 inches wide, or 4 1/8 yards 44 inches wide, or 3 1/2 yards 54 inches wide. Price of pattern, 30 cts.



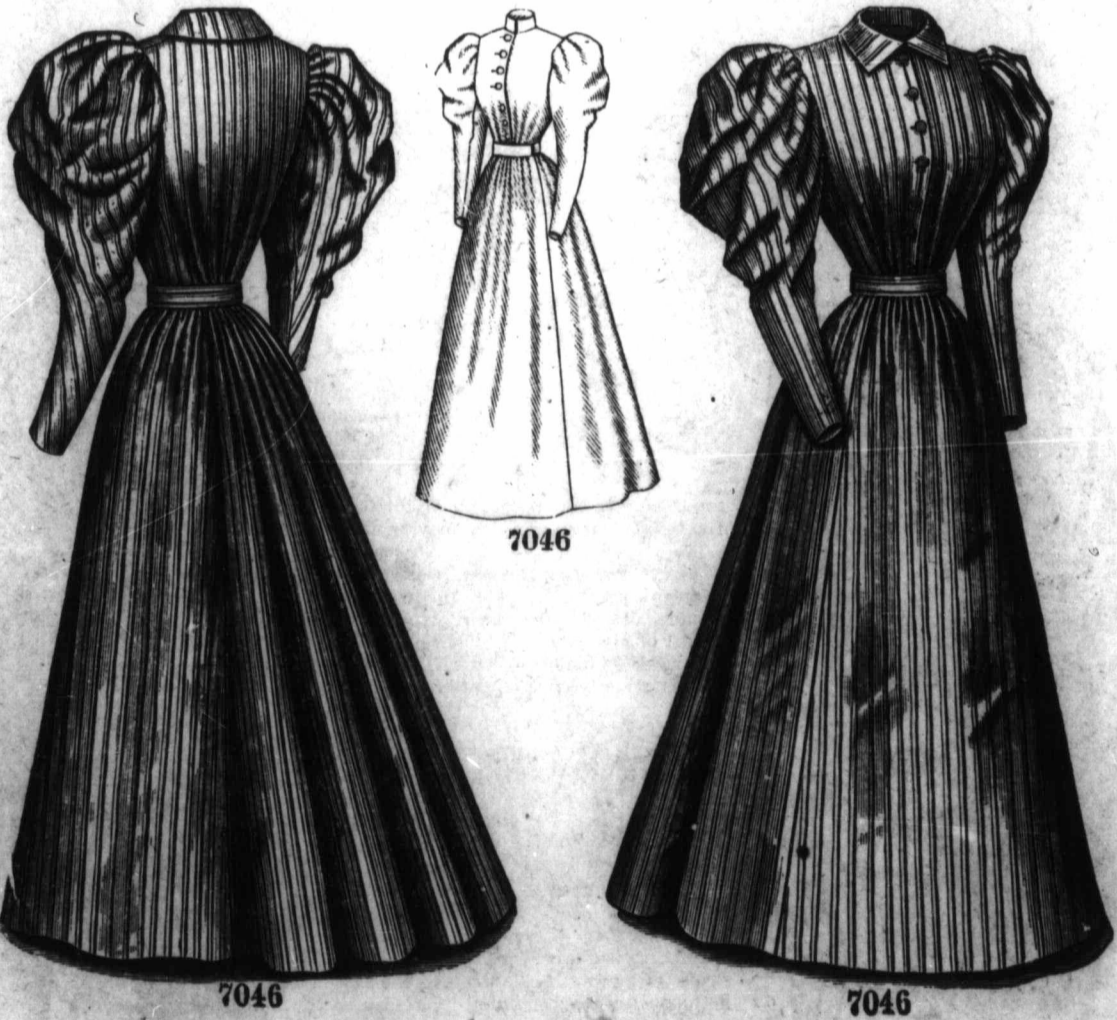
LADIES' DRESS SLEEVE, WITH PUFF EXTENDING TO THE ELBOW. (COPYRIGHT.)
 No. 7035.—This pattern is in 7 sizes for ladies from 9 to 15 inches, arm measure, measuring the arm about an inch below the bottom of the arm's-eye. A pair of sleeves for a lady whose arm measures 11 inches as described, will require 2 3/8 yards of material 22 inches wide, or 2 yards 30 inches wide, or 1 1/2 yard 44 inches wide, or 1 1/4 yard 50 inches wide. Price, 10 cts.



LITTLE GIRLS' DRESS. (COPYRIGHT.)
 No. 7028.—This pattern is in 8 sizes for little girls from 2 to 9 years of age. For a girl of 5 years, the dress calls for 3 yards of blue chambray 27 inches wide, with 1 1/4 yard of white lawn 36 inches wide, and 3/4 yard of embroidered edging 2 1/4 inches wide. Of one material, it will need 5 3/8 yards 22 inches wide, or 4 1/4 yards 30 inches wide, or 2 3/4 yards 44 inches wide. Price of pattern, 20 cts.



GIRLS' DRESS. (TO BE MADE WITH A ROLLING OR A STANDING COLLAR.) (COPYRIGHT.)
 No. 7015.—This pattern is most desirable for young people and is in 11 sizes for girls from 2 to 12 years of age. To make the dress of one material for a girl of 8 years, requires 5 yards 22 inches wide, or 4 yards 30 inches wide, or 2 5/8 yards 44 inches wide. Price of pattern, 20 cts.



LADIES' WORK DRESS, HAVING A SPENCER WAIST WITH A STANDING OR A TURN-DOWN COLLAR AND A FITTED LINING (WHICH MAY BE OMITTED) AND A FOUR-GORED SKIRT. (COPYRIGHT.)
 No. 7046.—This pattern is in 12 sizes for ladies from 28 to 50 inches, bust measure, and may be developed in chambray, gingham, percale and similar wash goods. Of one material for a lady of medium size, the dress needs 8 1/4 yards 27 inches wide, or 5 3/8 yards 36 inches wide, or 4 3/4 yards 44 inches wide. Price of pattern, 30 cts.



LADIES' DRESS SLEEVE. (TO BE MADE WITH ONE OR TWO PUFFS OR WITH A PUFF AND FRILL.) (COPYRIGHT.)
 No. 7041.—This pattern is in 7 sizes for ladies from 9 to 15 inches, arm measure, measuring the arm about an inch below the bottom of the arm's-eye. A pair of sleeves for a lady whose arm measures 11 inches as described, needs 3 3/8 yards of material 22 inches wide. Price of pattern, 10 cts.