

and gathered at the neck, the fulness being laid in forward-turning plaits that meet below the waist and spread prettily above.

The combination illustrated in this fetching toilette includes maize and light-brown silk. The waist is a charmingly simple

mode with soft fulness in the front and back prettily distributed by gathers at the shoulders, neck and lower edges. A double jabot of lace arranged over the closing is continued in a frill along the lower edge of the collar, which is covered by a ribbon stock and decorated at the top with a lace frill. The deep crush girdle is closed at the left side, one end being formed in a frill. Short puffs stand out prettily on the coat-sleeves, which are decorated with diagonal rows of insertion and lengthened by fancy cuffs that flare over the hand.

All the new light-weight woollens may be combined with plain or figured silk in this basque. In trimming it should be remembered that lengthwise disposals are improving to stout figures, and a jabot over the closing should be the only attempt at fluffiness.

We have pattern No. 9151 in nine sizes for ladies from thirty-four to forty-six inches, bust measure. For a lady of medium size the basque requires two yards and a fourth of dress goods forty inches wide, with two yards and five-eighths of silk twenty inches wide. Price of pattern, 1s. 3d. or 30 cents.

**FIGURE No. 228 W.—
LADIES' AFTER
NOON TOILETTE.**

(For Illustration see
Page 633.)

FIGURE No. 228 W.—This consists of a Ladies' basque-waist and skirt. The basque-waist pattern, which is No. 9133 and costs 1s. or 25 cents, is in ten sizes for ladies from thirty to forty-two inches, bust measure, and may be seen again on page 655. The skirt pattern, which is No. 9115 and costs 1s. 3d. or 30 cents, is in five sizes for ladies from twenty to twenty-eight inches, waist measure.

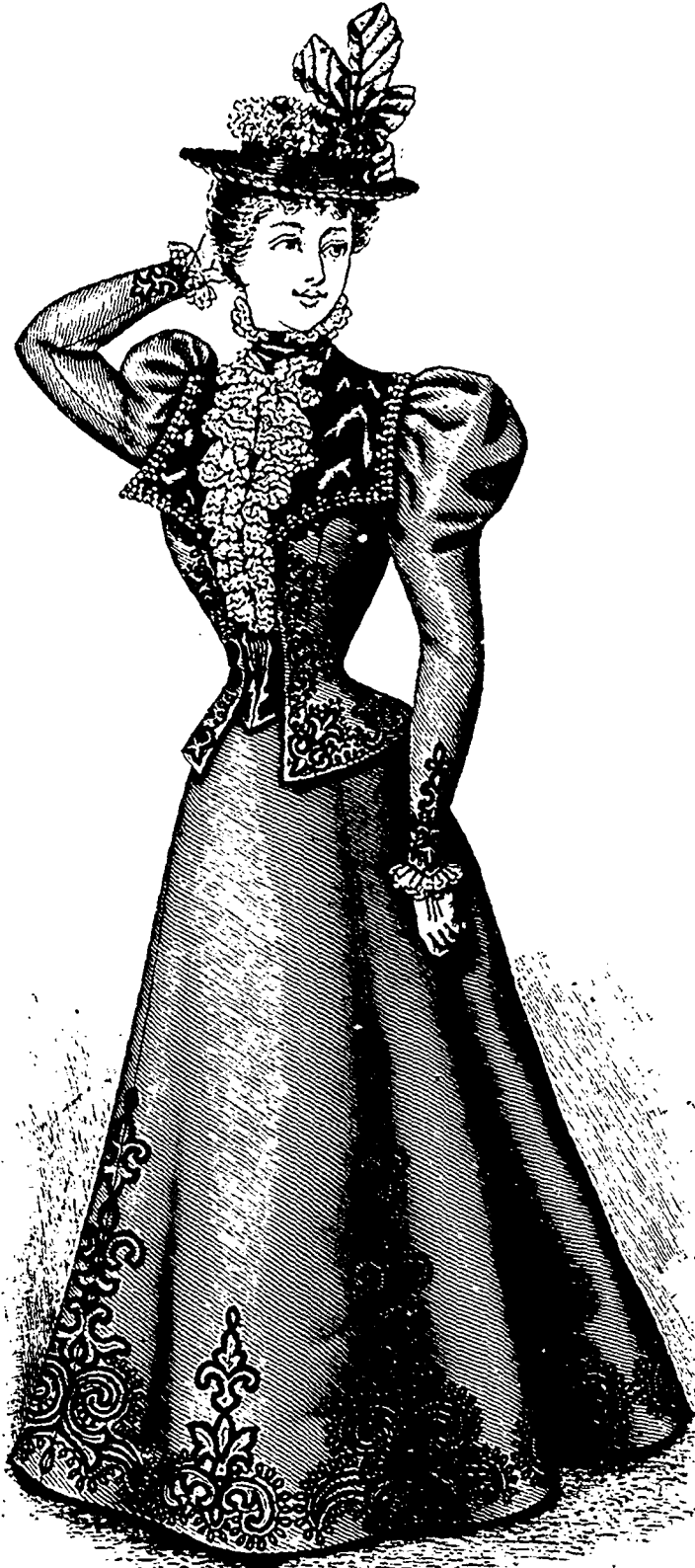


FIGURE No. 227 W.—This illustrates LADIES' PROMENADE TOILETTE.—The patterns are Ladies' Jacket-Basque No. 9151, price 1s. 3d. or 30 cents; and Skirt No. 9077, price 1s. 3d. or 30 cents.
(For Description see Page 646.)

The combination illustrated in this fetching toilette includes maize and light-brown silk. The waist is a charmingly simple mode with soft fulness in the front and back prettily distributed by gathers at the shoulders, neck and lower edges. A double jabot of lace arranged over the closing is continued in a frill along the lower edge of the collar, which is covered by a ribbon stock and decorated at the top with a lace frill. The deep crush girdle is closed at the left side, one end being formed in a frill. Short puffs stand out prettily on the coat-sleeves, which are decorated with diagonal rows of insertion and lengthened by fancy cuffs that flare over the hand.

The skirt comprises seven gores and is encircled at the bottom by a deep circular flounce, above which are arranged nine evenly-spaced bias folds that simulate tucks, each fold being headed by a row of insertion.

Dimity, lawn, organdy and Swiss will make up with exquisite daintiness in this way, and soft silken and woolen textiles are not less appropriate. A becoming fluffiness may be introduced in the trimming, which may consist of lace or chiffon edging, lace bands and ribbon.

The straw hat displays a trimming of lace, ribbon and flowers.

**LADIES' JACKET-
BASQUE, WITH
VEST FRONT.**

(For Illustrations see
Page 634.)

No. 9138.—This is a trim and becoming style of jacket-basque, for which a combination of plain cheviot and glacé tusseta back and sides is was selected. A close adjustment at the brought about by under-arm and side-back gores and a center