

POOR DOCUMENT

MC 2035

10

THE EVENING TIMES AND STAR, ST. JOHN, N. B., TUESDAY, JULY 20, 1920

SUGGESTS REMEDY FOR SHORTAGE OF HELP ON FARMS

(By C. Forest Laby.)
Newspapers throughout the country recently have been calling attention to the fact that with a very short time we may look for famine prices on wheat, corn, potatoes and all other staples of life; that the farm will fall to yield unless something drastic is accomplished immediately in the way of producing an effective factor that will put a stoppage to the exodus of the country youth citywards. "The question of 'what is to be done' is fundamental in its simplicity, but astoundingly difficult to answer," states a Chicago daily.

Prof. T. C. Atkinson of the National Grange is authority for the statement that only one per cent of the boys who left the farms of the United States to join in its war service have returned to take up again production from the soil. The other ninety-nine per cent, according to his research and investigation, have chosen as a means of their livelihood the industrial and commercial life which the city offers.

It was upon these men, who were available at one time at planting and harvest time, that the farmer depended for the making and gathering of his crops. Without them there can be no planting of seed—therefore the impossibility of resulting food products. "What is to be done?" is truly a question which demands the attention of the best minds of the country.

While serving in the American army for more than two years, both in this country and overseas, the writer came into contact with hundreds of boys who, until they enlisted in the service of their country, had never before left their home towns. Visiting many of the larger cities in America and Europe, it was not long before they realized that the larger cities offered them many things in the way of amusement and recreation, places of entertainment to go to in the evening—something entirely lacking in their own home towns, in fact, they frequently remarked that immediately upon their discharge from the service it was their intention to establish themselves in the larger cities and there take advantage of the greater opportunities open to them. As a consequence, when they returned and the glory of their "reception and homecoming" had worn away, they sought the larger communities and have since settled permanently there.

It is definitely agreed and accepted that a certain amount of exercise and recreation is essential in furnishing the necessary relaxation after a strenuous day at the office or factory. We have establishments where such may be secured in the larger cities. Why is something not done along this line for people in the smaller cities, towns and villages, giving the farm youth a place to go in the evening other than the cross-roads general store? His daily work is far more strenuous than that of his city brethren, and it would seem that for this reason his is proportionately more in need of a medium, a "safety-valve," to relieve the tension and ease things up a bit. Perhaps if such a medium be established, farm hands would be more plentiful, at least more so than they have been during the past few years.

John M. McLeod, of Columbus, Ohio,

STARTING
THURSDAY,
JULY 22

St. John's
Greatest
Mercantile
Event.

WAIT!
WATCH!

community center wherein these sports and games may be enjoyed by the farmer, his family and his help? It is something that is well worth study. The situation faced by the farmers of the country is a critical one, demanding earnest thought. It is of so serious a character that any movement that may alleviate the distress caused by a lack of farm labor must impress itself upon the thinking men as something to be considered? Contentment with one's environment is one of the chief factors in making for increased production, be it of the farm or the factory. The establishment of recreation centers might furnish the very means to establish and develop this contentment. If such were to be the case, a long step forward would have been taken in answering the perplexing and all-important question of "What is to be done?"

GOOD HOSPITAL SOCIAL
SERVICE IN TORONTO

Dr. Anna M. Richardson of New York has just completed a survey of social service work done in connection with hospital work in Toronto, and, after visiting cities all over the continent, finds there the ideal system for carrying out such work. Excepting in the General Hospital, which has its own social workers, the Health Department supplies the social service needs of the hospitals. Toronto is the only large city on the continent where this is the case, with the exception, perhaps, of Los Angeles, where, it is said, this system is being inaugurated.

USE The Want
Ad War

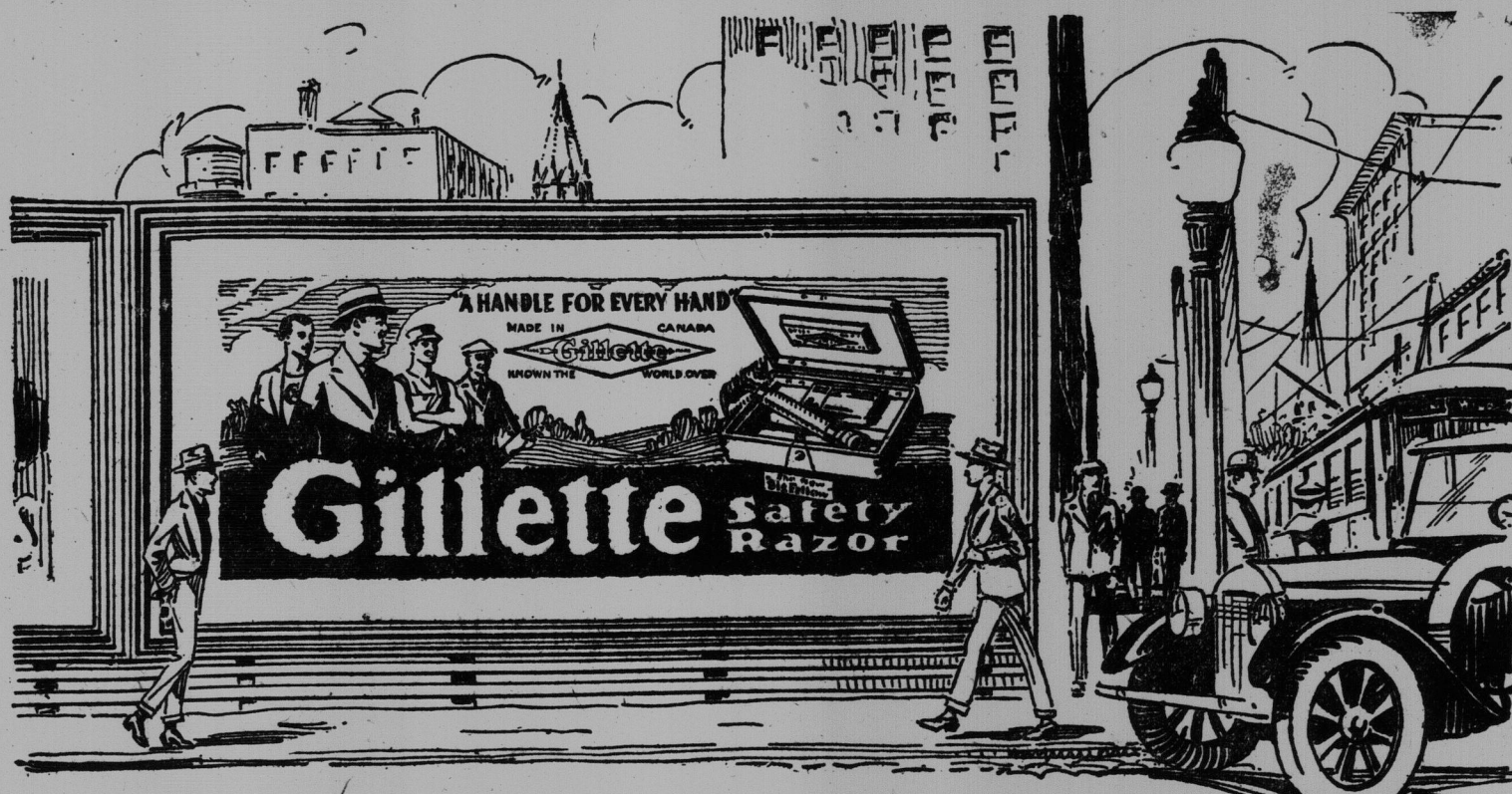
Life's Little Trials



WHEN the outie board that you have bought for your best girl tells her to beware of the man who seeks to win her as he has criminal tendencies. Well! aint it disconcertin'?

That's When A Fellow
Needs A Smoke

Experience will tell you
PHILIP MORRIS
NAVY CUT CIGARETTES
10 for 15 cents



What Would You Have Said?

STUDY the Gillette Poster on the boards. What do you think of the wording, "A Handle for Every Hand"? Do you think we have taken too much for granted that everybody knows that the Gillette Safety Razor will give a cleaner and more comfortable shave in the least time? That each set at \$5.00 includes 12 double-edged super-keen blades?

With the space at your disposal on this poster, would you have chosen the message we adopted, or would you have emphasized the NO STROPPING—NO HONING feature, or the fact that there are 20,000,000 Gillette users, or the saving of ten minutes each day by Gillette owners?

If you do not see the poster itself, you will find a reproduction of it in colours in dealers' windows, together with a display of some of the most popular Gillette sets.

Go into such a store and you will find Gillette Safety Razors in styles to suit every man who shaves—literally "A Handle for Every Hand"—among them the Gillette exactly suited to your hand! Take it!

THE GILLETTE SAFETY RAZOR CO.,
of Canada, Limited

ST. ALEXANDER ST. MONTREAL

MADE IN CANADA
TRADE **Gillette** MARK
KNOWN THE WORLD OVER



WILL ST. JOHN RESPOND TO THE CALL TOMORROW?

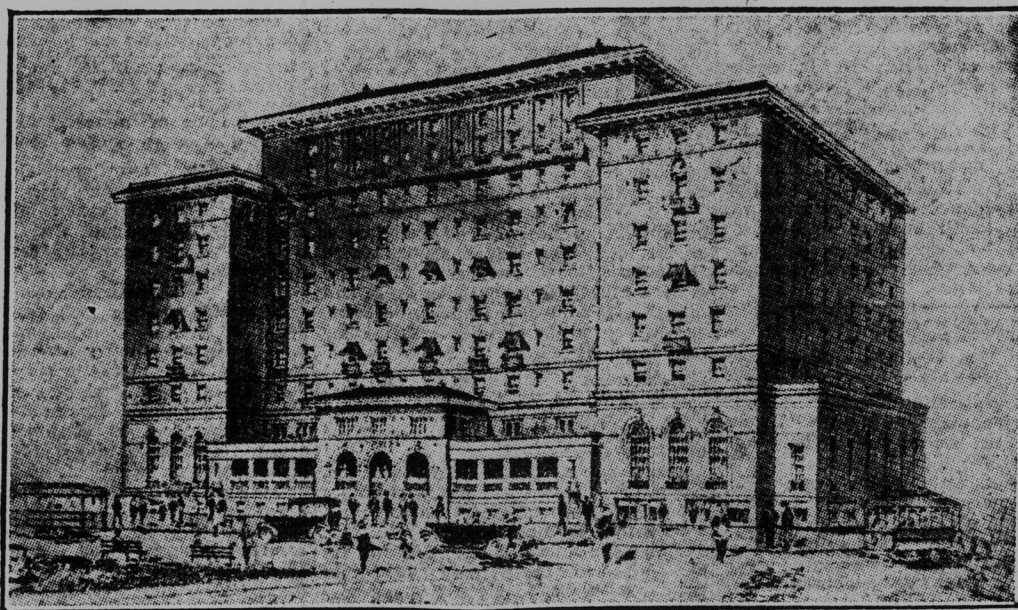
\$375,000 in Preferred Stock in the New Hotel Offered the People of This City

PLAIN FACTS

You are afforded an opportunity to display civic patriotism, and be paid for doing so.

An opportunity to assist in serving St. John's Hotel requirements.

THE SIGN OF A PROGRESSIVE CITY



A MODERN AND UP TO DATE HOTEL
THE "HOTEL CHAMPLAIN"

An opportunity to place at St. John's command the practical co-operation of the United Hotels Company which combines the ability to serve with the desire to do so.

An opportunity to invest in a Home Industry, which will materially assist in making the community a more prosperous one.

Full Printed Information Available at the Commercial Club,
164 Prince William Street

Our city is now being placed on record for or against modern hotel accommodation.

CITIZENS

The taxpayers of a city are the stockholders in that city. As such they should be vitally interested in its prosperity. Unless the city pays them dividends in the shape of rising real estate values and increased trade, they are losing money on their investment.

Insignificant hotel accommodation, like insignificant funds, pays insignificant dividends. All other things being equal, the city with the "Modern Hotel Accommodation" pays the largest dividends.

It receives more favorable publicity.

It attracts more desirable tourists.

Its merchants sell more goods.

Its real estate values rise faster.

The Commercial Club is earnestly inviting all taxpayers to co-operate in securing for St. John a New and Modern Up To Date Hotel.

A Hotel of this size will, of course, necessitate the employment of a very large staff of St. John men and women—another steady industry.

If St. John says "No" the great corporations who have made this hotel possible will withdraw their support.

CITIZENS

One of the most difficult problems confronting cities today is the provision for the greatly increased hotel traffic, which has developed during the last few years, especially since the introduction of motor vehicles.

The first step in such relief is obviously that of providing the necessary hotel accommodation.

Q. Is St. John confronted with such a problem?

A. Yes.

Q. Is it possible to solve the problem?

A. Yes. The co-operation of the citizens with the Commercial Club, in its Drive to secure a portion of the funds necessary for the construction and equipment of The New Hotel, will successfully solve the problem.

The \$375,000 solicited of the investing public of St. John will be thrice repaid in construction, wages and local purchases of building materials and equipment before the hotel is ready for operation.

THIS IMPORTANT MATTER NOW RESTS WITH THE CITIZENS OF ST. JOHN