

**LADIES' AND GIRLS' FRENCH BATHING COSTUME, CONSISTING OF A YOKE-BODY AND DRAWERS IN ONE AND A FOUR-GORED SKIRT (TO BE MADE WITH A HIGH OR ROUND NECK AND WITH BISHOP SLEEVES OR SHORT PUFF SLEEVES.)**

No. 9111.—This costume is shown made of brilliantine, with a braid decoration. The upper part of the costume back and front is a triple-pointed yoke to which the gathered upper edges of the body-and-drawers portion is joined. The body-and-drawers portion is shaped by a center seam and inside leg-seams, and the drawers are drawn in by elastics. Tapes also regulate the fulness at the waist, and the closing is made invisibly at the center of the front. The sleeves, which may be in bishop style or in short puff style, are gathered at their upper edges and drawn in on elastics a little above their lower edges. A gathered frill borders the lower edge of the yoke and stands out over the sleeves. The neck may be slightly low and round or it may be finished with a standing collar covered by a stock.

The skirt has a front-gore, a gore at each side and a straight back-breadth. The breadth is gathered and the placket is finished at its center. A belt completes the top, and over it is arranged a pointed, fitted girde that is closed at the left side, and is neatly boned.

Pattern No. 9111 is in 6 sizes from 24 to 44 inches, bust measure. For a lady of medium size, it requires 10½ yards of material 27 inches wide,

the front. The fulness at the waist is drawn closely to the figure by a tape tied in front; and the drawers are gathered at their lower edges and sewed to bands closed with hooks and loops. The Russian bishop sleeves are finished with round

sleeves. The puff sleeves are drawn on an elastic near the lower edge. The sailor sleeves are gathered at the top and plaited into round cuffs.

The skirt is circular in shape and may be made

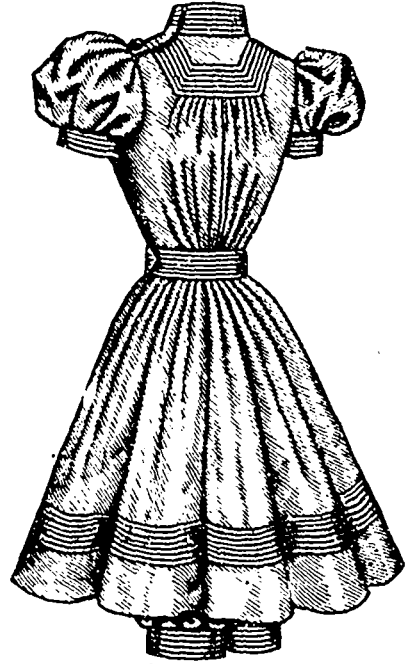


9112



9112

Front View.



9112

Back View.

**LADIES' AND GIRLS' RUSSIAN BATHING COSTUME, CONSISTING OF A YOKE BODY AND DRAWERS IN ONE AND A TWO-PIECE SKIRT. (TO BE MADE WITH A HIGH OR SQUARE NECK AND WITH RUSSIAN BISHOP SLEEVES OR SHORT PUFF SLEEVES.)**

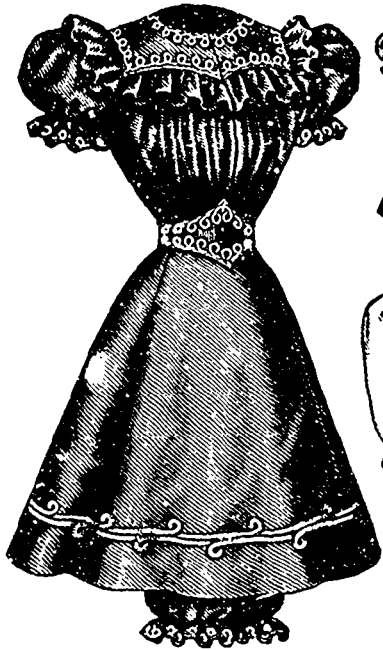
cuffs, and the short, puff sleeves are finished with bands. The high neck is completed with a standing collar.

The two-piece skirt has a front-gore that fits smoothly at the top and a straight, full portion that is gathered at the top; it is sewed to a belt that is closed at the left side, above the placket.

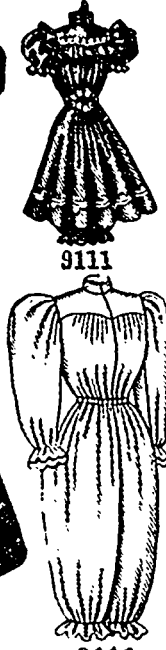
Pattern No. 9112 is in 6 sizes from 24 to 44 inches, bust measure. For a lady of medium size, the garment needs 8½ yards of material 27 inches wide, or for a girl of 11 years or 28 inches, bust measure, 6¼ yards 27 inches wide. Price of pattern, 30 cents.

in regular or tunic length. A placket is made at the center of the back and a belt is worn.

Pattern No. 9113 is in 6 sizes from 24 to 44 inches, bust measure. For a lady of medium size, it needs 5½ yards of navy-blue with 1 yard of



9111



9111

**LADIES' AND GIRLS' FRENCH BATHING COSTUME, CONSISTING OF A YOKE-BODY AND DRAWERS IN ONE AND A FOUR-GORED SKIRT. (TO BE MADE WITH A HIGH OR ROUND NECK AND WITH BISHOP SLEEVES OR SHORT PUFF SLEEVES.)**

or for a girl of 11 years or 28 inches, bust measure. 7 yards 27 inches wide. Price of pattern, 30 cents.

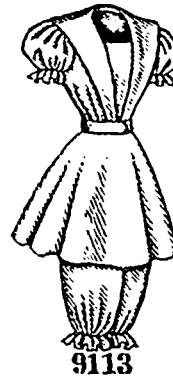
**LADIES' AND GIRLS' RUSSIAN BATHING COSTUME, CONSISTING OF A YOKE-BODY AND DRAWERS IN ONE AND A TWO-PIECE SKIRT (TO BE MADE WITH A HIGH OR SQUARE NECK AND WITH RUSSIAN BISHOP SLEEVES OR SHORT PUFF SLEEVES.)**

No. 9112.—This bathing costume is pictured made of gray brilliantine and trimmed with white braid and buttons. The yoke-body and drawers are in one and the pattern provides for a high or square neck and for Russian bishop sleeves or for short puff sleeves. The shaping of the body-and-drawers is accomplished by a center, shoulder and inside leg seams, and the top of the body is gathered across the center at the front and back and joined to a Pompadour yoke shaped by shoulder seams. The closing is made at the left side of

**LADIES' AND GIRLS' SAILOR BATHING COSTUME, CONSISTING OF A SHIELD-BODY AND DRAWERS IN ONE, AND A CIRCULAR SKIRT THAT MAY BE IN REGULAR**

**OR TUNIC LENGTH. (TO BE MADE WITH A HIGH OR OPEN NECK AND WITH FULL-LENGTH SAILOR SLEEVES OR SHORT PUFF SLEEVES.)**

No. 9113.—This costume is represented made of navy-blue and red brilliantine, and trimmed with braid. The body and drawers are in one and are shaped by a center seam, inside leg-seams and shoulder seams. The front edges of the body flare to reveal a shield that may be shaped in rounding or square outline at the neck; and to these front edges are joined the ends of a large sailor collar. The drawers show a frill finish at the lower edges, being drawn in by elastics a little above the edges. Elastic or tapes also regulate the fulness about the waist. The costume may have full-length sailor sleeves or short puff



9113



9113

Front Views.



Back View. 9113

**LADIES' AND GIRLS' SAILOR BATHING COSTUME, CONSISTING OF A SHIELD-BODY AND DRAWERS IN ONE, AND A CIRCULAR SKIRT THAT MAY BE IN REGULAR OR TUNIC LENGTH. (TO BE MADE WITH A HIGH OR OPEN NECK AND WITH FULL-LENGTH SAILOR SLEEVES OR SHORT PUFF SLEEVES.)**

red brilliantine 44 inches wide, or for a girl of 11 years or 28 inches, bust measure, it needs 3½ yards of navy-blue with 1 yard of red brilliantine 44 inches wide. Price of pattern, 30 cents.