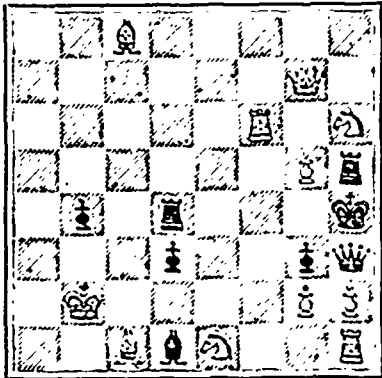


**CHIESS.**

Solution to Problem No. 21, Q to QB sq. Solved by C. W. L. and J. W. Wallace

PROBLEM No. 26.

By E. J. Winterwood.  
From London Advertiser.  
BLACK 8 pieces.



WHITE 11 pieces.

White to play and mate in two moves.

GAME No. 27.

Showalter-Judd match  
FIRST GAME.  
RUY LOPEZ.

- | WHITE.          | BLACK.      |
|-----------------|-------------|
| J. W. Showalter | Max Judd.   |
| 1 P to K4       | P to K4     |
| 2 Kt to KB3     | Kt to QB3   |
| 3 B to Kt5      | P to QK3    |
| 4 B to R4       | Kt to B3    |
| 5 Castles       | Kt takes P  |
| 6 P to Q4       | P to QKt4   |
| 7 B to Kt3      | P to Q4     |
| 8 P takes P     | Kt to K2    |
| 9 R to K sq     | Kt to QB4   |
| 10 Kt to Q4     | Kt to K3    |
| 11 P to QB3     | P to QB4    |
| 12 Kt to KB3    | B to Kt2    |
| 13 QKt to Q2    | P to Kt3    |
| 14 Kt to B sq.  | B to Kt2    |
| 15 B to K3      | Q to B2     |
| 16 Q to QB sq   | P to KR3    |
| 17 P to QR4     | B to QB3    |
| 18 P takes P    | P takes P   |
| 19 R takes R ch | B takes R   |
| 20 Q to R sq    | B to Kt2    |
| 21 Q to R7      | Castles     |
| 22 Q to R sq    | Kt to KB4   |
| 23 B to Q2      | P to Q5     |
| 24 B to B2      | B takes Kt  |
| 25 B takes Kt   | P takes B   |
| 26 P takes B    | P to KB5    |
| 27 P takes P    | Kt takes P  |
| 28 Q to Q sq    | B takes P   |
| 29 P to R3      | P to B3     |
| 30 K to R sq    | Q to Q2     |
| 31 Kt to R2     | K to R sq   |
| 32 B to B3      | Q takes P   |
| 33 R to Kt sq   | Q to B4     |
| 34 R to Kt2     | R to Kkt sq |
| 35 R takes R ch | K takes R   |
| 36 P to Kt4     | Q to QB7    |
| 37 Q takes Q    | Kt takes Q  |
| 38 B takes B    | P takes B   |
| 39 P takes P    | K to B2     |
| 40 Kt to Kt4    | K to K3     |
| 41 P to B6      | Kt to Q5    |
| 42 Kt takes KP! | K to Q3!    |
| 43 Kt to Q3     | Kt to K3    |
| 44 Kt to QKt4   | K to B4     |
| 45 P to B7      | Kt takes P  |
| 46 Kt to Q3 ch  | K to Q5     |
| 47 Kt takes P   | P to Kt5    |
| 48 K to Kt2     | P to Kt6    |
| 49 Kt to K2 ch  | K to B5     |
| 50 Kt to Kt3    | P to Kt7    |
| 51 Kt to K4     | K to Q6     |
| 52 Kt to B5 ch  | K to B7     |
| 53 Resigns.     |             |

Time—Judd, 3 hours; Showalter, 3.05.  
The latest report gives the score:—  
Judd, 4; Showalter, 3; Drawn 0.

**SCOTT'S**

**EMULSION**

DOES CURE

**CONSUMPTION**

In its First Stages.

Palatable as Milk.

Be sure you get the genuine in Salmon color wrapper; sold by all Druggists, at 50c. and \$1.00.  
SCOTT & BOWNE, Belleville.

Most } PROFIT to the  
Grocer,  
Economical to  
the Housewife,

Who Patronizes

**Woodill's**

**German Baking Powder**

The finest and largest range of

**TAILORS' CLOTHS**

to be seen in the city is at

**STANFORD'S**  
THE TAILOR,  
156 HOLLIS STREET.

**SITUATION VACANT.**

We are just about engaging a representative in every County in Nova Scotia and Cape Breton to Sell our Goods. Large Commissions for the right persons. Write us for full particulars.

**KNIGHT & COMPANY,**

WHOLESALE STATIONERS,  
125 Granville, and 22 Duke Streets, Halifax.

**AGENTS WANTED.**

If you want to Make MONEY, take hold and Sell our Choice Nursery Stock. Now is the time. Write us at once for terms.  
MAY BROTHERS, Nurserymen,  
ROCHESTER, NEW YORK.

**\$10** Dickens complete in 15 Vols. **\$10**  
and Webster's Dictionary,  
FULL SHEEP FOR

Or Webster & Waverly, 12 Volumes, \$ 9.75  
Or Webster & Carlyle, " " 11.50  
Or Webster & Thackeray, 10 " " 9.00  
Or Webster & Elliot, 6 " " 8.00

Sent to any part of the city or to any station on I. C. R. or W. & A. R. Free on receipt of Price, by

**Knowles' Bookstore,**  
A. M. HEARE, Manager,  
Cor. Granville & George Sts.  
HALIFAX, N. S.

**DOUGLASS & CO.**  
**NORTH FERRY FOUNDRY**

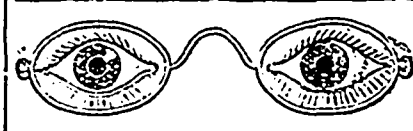
UPPER WATER ST., HALIFAX.  
Manufacturers of Hollow-Ware, Soil Pipe and Fittings.  
Iron Fencing and Casing Fitted up with neatness and despatch.  
LIGHT AND HEAVY CASTINGS OF ALL KINDS MADE TO ORDER  
STOVE REPAIR CASTINGS ALWAYS IN STOCK.  
We guarantee to give satisfaction. TELEPHONE 416.

**WILMOT SPA SPRING CO., L'D**  
**Carbonators,**  
SPECIALTIES—

Royal Belfast Ginger Ale,  
Wilmot Spa Natural Mineral Water.

Our "ROYAL BELFAST" is made from the pure Jamaica ginger root and compounded with great skill and care, and WARRANTED absolutely NON-ALCOHOLIC, and we don't hesitate to say, the BEST IN THE WORLD. Our "WILMOT SPA" NATURAL Mineral Water is bottled in quarts and pints (Apolinaris style) directly at the SPRING, thereby retaining all its MEDICINAL qualities for which it is noted, and is securely packed in cases of 50 quart and 100 pint bottles each for shipping and family use. We use the LATEST IMPROVED Machinery, Cylinders and Connecting Pipes lined with Bancher pure block tin, and this insures the goods from contamination WITH LEAD OR COPPER, thereby being ABSOLUTELY PURE.  
NOTE—WE DO NOT PUT UP ANY BRAND OF CHEAP GOODS.

**HATTIE & MYLIUS,** - Halifax, N. S.  
Are our Selling Agents, and all orders addressed to them will receive PROMPT ATTENTION.  
WILMOT SPA SPRING CO., L'D.



**GOOD EYES**

are a blessing, which is often appreciated only when the blessing is lost forever. We

**HAVE NO U'S**

for the folly of eye-glasses as a mere fad of fashion, but if your eyes are at all weak, the sooner you come to us

**FOR GLASS E'S**

the better off you will be. Our collection is very large, and contains glasses suited to every defect of vision.

**W. H. BANNISTER,**

**OPTICIAN,**  
(Graduate of New York Optical College.)  
136—GRANVILLE STREET—136  
HALIFAX, N. S.

**London Rubber Stamp Mfg Co.**

Rubber and Metal Stamps,  
Notarial Seals,  
Hectograph Copying Pads,  
Stencil Cutters, &c.  
223 HOLLIS ST., Halifax.

**LONDON DRUG STORE,**

147 Hollis Street,  
**J. GODFREY SMITH,**  
DISPENSING CHEMIST,  
Proprietor. Agent for  
Laurance's Axis-Cut Pebble Spectacles and  
Eye Glasses.

In Stock, the great cure of Neuralgia "Eau Anti-Neuralgique." Chronic cases yield to its curative effects.  
Also, in Stock, a line of FANCY GOODS. Dressing Cases, Toilet Sets, in Plush, Leather, &c.

**THE BRAS D'OR**  
**STEAM NAVIGATION COM'Y,**  
(LIMITED.)

**SUMMER ARRANGEMENTS.**

On and after JUNE 30th the Large and well furnished STEAMER

**MARION**

will leave Port Mulgrave for Sydney and intermediate ports in the Bras D'or Lakes every TUESDAY, THURSDAY, and SATURDAY on arrival of I. C. R. train, due at 22. Railway time. RETURNING will leave Sydney on MONDAY, WEDNESDAY, and FRIDAY at 2 p.m., connecting with Express Train leaving Mulgrave for the West at 10.20 Railway time.

The well known favorite Steamer NEPTUNE will leave Mulgrave for Sydney via St. Peter's Canal and Fast Bay on arrival of the train, DAILY, RETURNING same night, in time for Morning Train.

The beautiful Steamer MAGNOLIA will run on the Lake between WHYCOMAGH & LITTLE BRAS D'OR, via BADDECK, as usual.

Tickets can be purchased at the Ticket Office of the I. C. Railway, and all information given at office of  
**J. W. GORHAM & CO.**  
Halifax, N. S.  
AGENTS.

**WE FILL TEETH,**  
MAKE TEETH, AND  
REPAIR TEETH.

In fact we do everything in Dentistry, and do it well. FEES LOW.  
Rooms, 125 BARRINGTON ST.

**J. E. MULLONEY & CO. DENTISTS**

**TOWER'S**  
**AMERICAN OIL CLOTHING,**  
**HATS, Etc.**

The Subscriber wishes to inform the Trade that he has now on hand a FULL and COMPLETE STOCK of the above Celebrated Goods. They are Superior to any other OIL CLOTHING sold in this market, and prices quite as low.

An Inspection of Goods Solicited and Prices Furnished to the Trade on Application.  
**JOHN P. CHETWYND, Agent,**  
HEAD YOUNG AND HART'S WHARF.