

# THE ROYAL ELECTRIC COMPANY

MONTREAL, QUE.

Western Office, TORONTO, ONT.

SOLE MANUFACTURERS FOR CANADA OF

THE ONLY PRACTICALLY COMPLETED SYSTEM IN OPERATION TO-DAY FOR FURNISHING

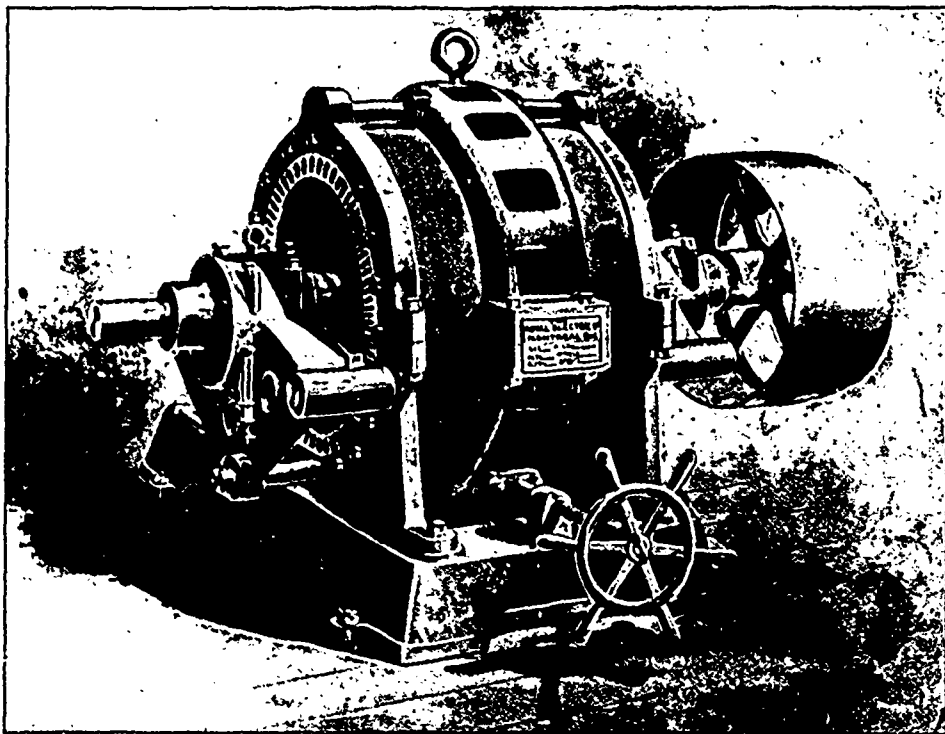
Light and Power from the same Alternating  
Generator and Circuits.

## TWO - PHASE GENERATORS

Entirely novel in construction and having

**No moving wire, No Collector, Slow Speed,  
Better Inherent Regulation, Higher Efficiency,**

than any other Alternating Machine on the market.



60 K. W. S. K. C. Two Phase Generator

## SELF-STARTING TWO-PHASE MOTORS

Superior in many ways to Direct Current Motors

## — TRANSFORMERS —

THE BEST AND MOST EFFICIENT ON THE MARKET