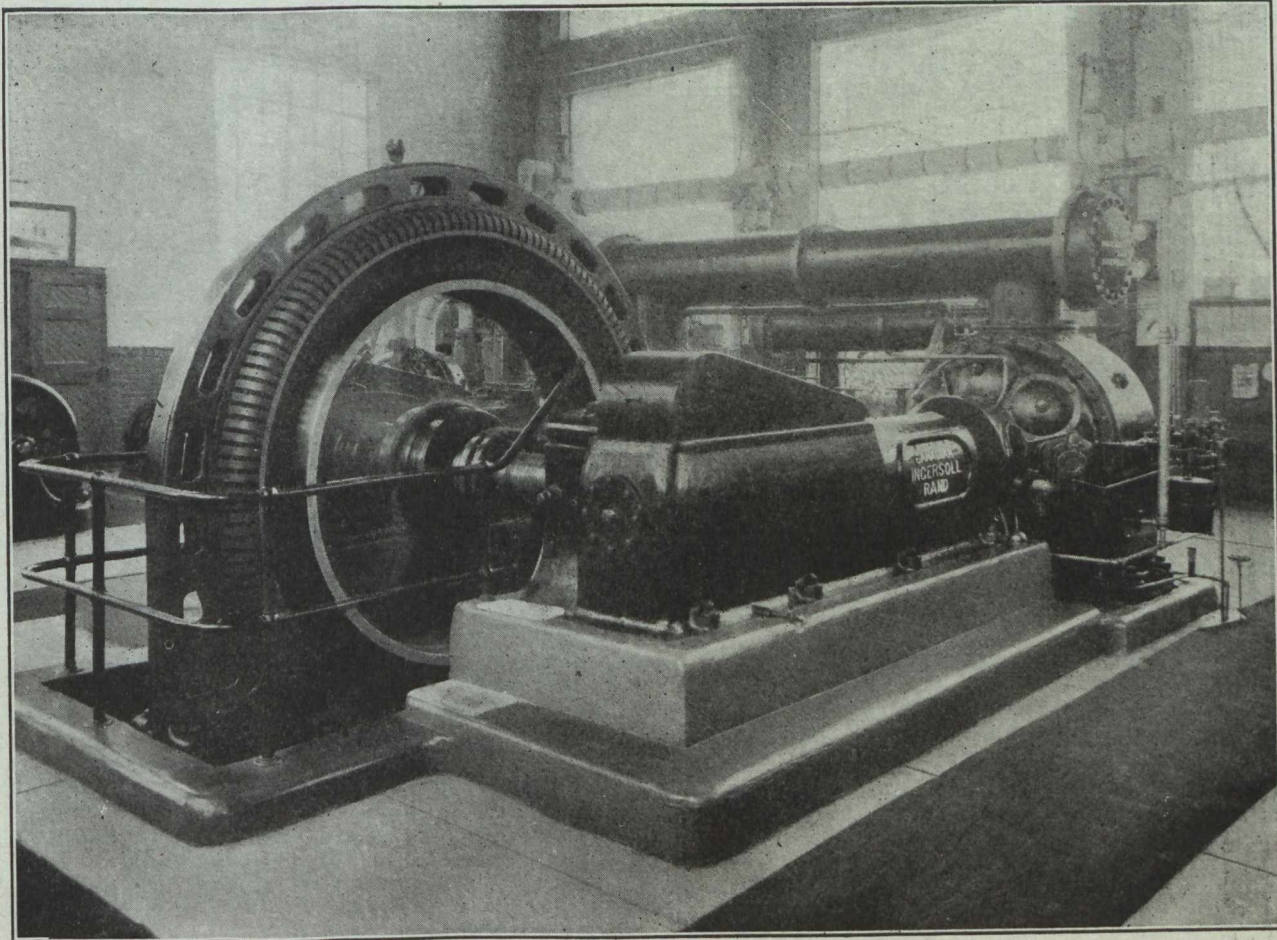


# CANADIAN INGERSOLL-RAND CLASS "PRE" COMPRESSORS

Satisfy The Demand For Economy and Reliability In The Mine Power Plant



This 2230 Cubic Foot Class "PRE-2" Direct connected Electrically Driven Compressor is one of four Canadian Ingersoll-Rand Compressors installed in the model power house of the Canadian Steel Foundries' Longue Pointe branch. Placed in service in April, 1919, it has been running day and night since, and according to the chief engineer "has been giving excellent satisfaction."

### ***Their Advantages Are Many.***

I-R Silent Plate Valves are simple, durable, automatic and efficient.

Efficient Intercooling between stages, and thorough jacketing of Cylinders and Heads.

Enclosed Construction completely excludes dust and dirt.

Built In Units, easy to set up or take down and do not require complicated foundations

### ***Here Are A Few:***

Automatic Flood Lubrication delivers oil in proportion to speed and is cleanly and economical.

Automatic Clearance Control provides reliable and economical regulation in five steps from no load to full load.

Sturdy Construction, large wearing surfaces, liberal port and valve areas and easy accessibility of all parts.

High Speed Direct Connected Motor Drive gives Maximum output for weight and floor space occupied.

*Bulletin K-304 describes these machines May we send you a copy?*

## Canadian Ingersoll-Rand Company Limited

Sydney    Sherbrooke    Montreal    Toronto    Cobalt    Winnipeg    Nelson    Vancouver