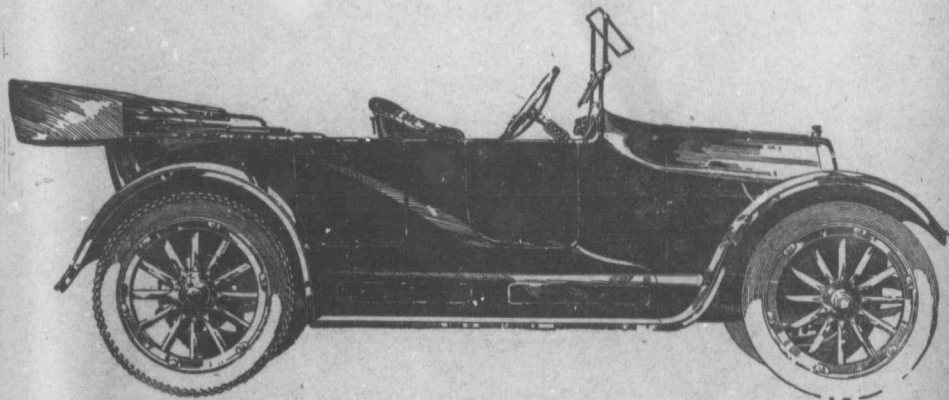


The World's Most Powerful Low Priced Car

Overland
TRADE MARK REG.

31½
Horsepower



It has the latest and most improved system of ignition.

It has the cantilever springs—the easiest riding springs in the world.

What's more, it's complete. Not a thing to buy. You get the finest Auto-Lite electric starting and lighting system, magnetic speedometer, one-man top, demountable rims and practically every accessory found on the highest priced cars.

From a driving standpoint, the new car is

ideal. It's light, easy to handle and anyone can drive it.

Take one look and be convinced.

And mark these words—the car is destined to be regarded and referred to as one of the really great achievements of the great automobile industry.

Yet it only goes to prove how big production can cut cost and save you money.

First come, first served. See the nearest Overland dealer and place your order now.

SPECIFICATIONS

4 cylinder en bloc motor
3¼" bore x 5" stroke
104-inch wheelbase
4-inch tires
Cantilever rear springs
Streamline body
Electric starter
Electric lights
Magnetic speedometer
Complete equipment
6-passenger touring \$890
Roadster \$870

Catalogue on request. Please address Dept. 661.

Willys-Overland, Limited, Head Office and Works **West Toronto, Canada**